



ART
BY
HAND

THE
48TH
ANNUAL
PHILADELPHIA
MUSEUM
OF ART

CONTEMPORARY
CRAFT
SHOW

Gifts to the Philadelphia Museum of Art

When you purchase a ticket to the Philadelphia Museum of Art Craft Show or become a sponsor of the Show, you are directly supporting the work of the Philadelphia Museum of Art. Thanks to your support, the Craft Show has contributed more than \$14.8 million over a 47-year period.



The impact of the 2023 Show proceeds can be seen throughout the museum with funds supporting a variety of programs such as **Art Kids** which provides programming using the collection as a catalyst for creative play while building connections with families and young audiences. Additionally, equipment purchased for the Conservation Department will benefit the museum and generations of conservators.

Also provided was support to the very successful special exhibition, **Mary Cassatt at Work**, held May 18-September 8, 2024.

Visit www.philamuseum.org for information about upcoming museum exhibitions.

Presented by the Craft Show Committee and The Women's Committee of the Philadelphia Museum of Art for the benefit of the Philadelphia Museum of Art.

November 14, 2024

Preview Party, 4:00 to 9:00pm

November 15, 2024

Open to the public 11:00am to 7:00pm

November 16, 2024

Open to the public 10:00am to 6:00pm

November 17, 2024

Open to the public 10:00am to 5:00pm



Featured on the cover

Judith Schaechter

(American, born 1961)

Over Our Dead Bodies

Stained Glass Panel (60"x42"x5")

Philadelphia Museum of Art:

Purchased with the Leonard and
Norma Klorfine Foundation, 2021

Dear Friends,

The Craft Show Committee continues to produce the largest annual fund-raising event for the Philadelphia Museum of Art. To date, the Show has raised more than \$14.8 million for the Museum. These funds provide financial support for educational programs, special exhibitions, equipment, the acquisition of art and craft for the permanent collection, and various other programs and projects.

Thank you to our show sponsors for their remarkable generosity: 19/19 Investment Counsel, Maguire Foundation, Jane & Leonard Korman Family Foundation, Mill Creek, Parkway, Morgan Stanley Wealth Management, Cozen O'Connor, Corient, The Frank Financial Consulting Group, Osage Partners, and The McCausland Foundation.

Join us in welcoming 195 of the finest and most dynamic artists from across the country. Special welcome to the 24 guest artists from Italy who not only meet the highest standards but also provide refreshing insights into Italy's contemporary art scene.

Our deepest appreciation goes to the Craft Show Committee; a group of one hundred dedicated women who spend thousands of volunteer hours to plan and produce the Show. Thanks also to the Women's Committee and the Museum staff for their efforts on behalf of the Show. We are grateful to our Preview Party patrons for your generous support of the Preview Party. Your loyalty ensures the success of the Show.

Finally, special recognition is extended to our show manager, Nancy O'Meara. Over the past 30 years, she has helped develop the Show into an exceptional event. We are grateful for her notable expertise, remarkable talent, and diplomatic skills.

Enjoy the 2024 Philadelphia Museum of Art Contemporary Craft Show!

Kristine Christensen
Chair, 2024 Craft Show

Marta Adelson
President, The Women's Committee

About the cover

Judith Schaechter self-identifies as a decorative artist; working mostly in stained-glass panels, she incorporates elements of engraving, collage, painting, stenciling, and digital technology. Yet she is not bound by this art form's traditional associations or rules and makes her mark by transcending expectations with her carefully honed skills and unique subject matter.

Over Our Dead Bodies (2020), presents a “tree of life,” an environmental statement proposing that without the dominance of humankind, nature would take over. This panel took on another meaning as it was being produced during the early days of COVID-19, leading the artist to include a graveyard beneath the tree. With thousands of lives being lost in those early weeks of the pandemic, Schaechter turned to nature for comfort, reinforcing her belief that the existence of beauty hinges on the certainty of death. *Over Our Dead Bodies* chronicles the pandemic and our shared experience but affirms our mortality and will to live.

(Text taken from Philadelphia Museum of Art, NEW GRIT exhibition gallery guide 2021.)



Judith Schaechter
(American, born 1961)
Over Our Dead Bodies (2020)

Directory of Exhibitors

Debra Adelson

Collingswood, NJ
(413) 687-5126
www.debraadelsonjewelry.com
617 Jewelry



Jowita Allen

Chevy Chase, MD
(202) 246-1949
www.jowitaallen.com
203 Jewelry



Maria Albornoz

Philadelphia, PA
(727) 254-7177
www.mariaalbornoz.com
120 Ceramics



Jennifer Armstrong & Tanya Alsberg

Kennebunkport, ME
(330) 689-6849
www.jakdesigns.com
303 Fiber Wearable



Elyse Allen

Santa Fe, NM
(917) 626-5617
www.elyseallentextiles.com
313 Fiber Wearable



Teresa Audet

Pittsburgh, PA
(651) 894-3962
www.teresaaudet.com
620 Emerging Artist-Mixed Media



Directory of Exhibitors

Belle Brooke Barer

Santa Fe, NM

(575) 779-6317

www.bellebrooke.net

224 Jewelry



Francisco & Laura Bautista

Sandy, OR

(971) 235-1290

www.bautistaweaving.com

404 Fiber Decorative



Nicholas Barnes

Woolwine, VA

(276) 692-5041

114 Wood



Beehive Handmade

(Dowd & Bonazoli)

Warren, RI

(508) 678-4335

www.beehivehandmade.com

212 Metal



Gian Luca Bartellone*

Bolzano, Italy

www.bodyfurnitures.com

412 Jewelry



Lisa Belsky

Philadelphia, PA

(267) 334-1216

www.lisabelsky.com

112 Ceramics



Directory of Exhibitors

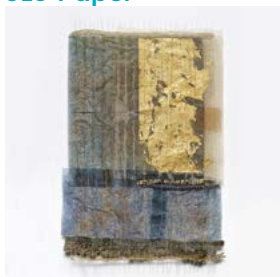
Annie Bisone

Milwaukee, WI
(414) 426-9607
www.laloworkshop.com
131 Fiber Wearable



Agathe Bouton

Wynnewood, PA
(610) 680-5001
www.agathebouton.com
315 Paper



Patrizia Bonati*

Cremona, Italy
www.patriziabonati.it
314 Jewelry



Pierre Bowring

East Chatham, NY
(804) 221-8539
www.bowglass.com
503 Glass



Anna Boothe / Pate de Verity

Zieglerville, PA
(610) 715-8732
www.patedeverity.com
427 Glass



Christina Boy

Madison, VA
(540) 718-7777
www.christinaboydesign.com
716 Furniture



Directory of Exhibitors

Ann Brauer

Shelburne Falls, MA
(413) 834-3576
www.annbrauer.com
307 Fiber Decorative



Winthrop Byers

Rock Springs, WI
(608) 495-2081
www.thebyersstudio.com
712 Ceramics



Stephen Brucker

Camillus, NY
(315) 209-2574
www.stephenbrucker.com
715 Glass



Pam Caidin

Santa Fe, NM
(303) 579-0996
www.pamcaidin.com
621 Jewelry



Sandra Byers

Rock Springs, WI
(608) 522-5648
www.thebyersstudio.com
713 Ceramics



Marc Carmen

Rahway, NJ
(973) 885-9829
www.marccarmen.com
528 Glass



Directory of Exhibitors

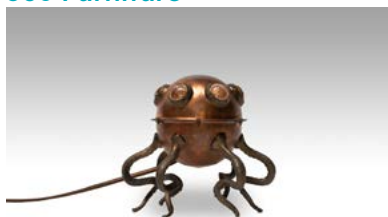
**Patrick Carrow –
Patrick Michael Accessories**
Philadelphia, PA
(215) 219-7884
www.patrickmichaelaccessories.com
205 Fiber Wearable



**Fred Chase – Fred Chase
Woodcraft**
Collingswood, NJ
(609) 364-0625
www.fredchasewoodcraft.com
129 Wood



Evan Chambers
Pasadena, CA
(805) 215-9269
www.evanchambersobjects.com
506 Furniture



Sarah Grace Cheek
Charlottesville, VA
(757) 817-9060
www.sarahgracecheek.com
118 Wood



Teresa Chang
Philadelphia, PA
(267) 255-6209
www.teresachang.com
222 Ceramics



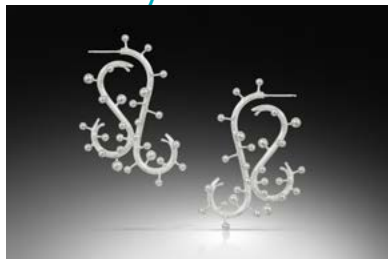
Dwo Wen Chen
Providence, RI
(401) 580-0936
www.threewheelstudio.com
629 Ceramics



Directory of Exhibitors

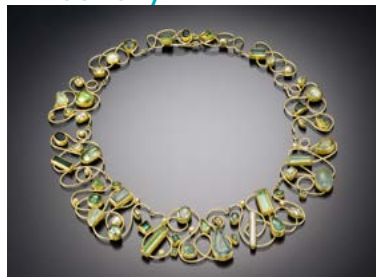
Jennifer Chin

Boston, MA
(617) 922-2546
www.lushmetals.com
232 Jewelry



Petra Class & Lucas Class-Knorr

San Francisco, CA
(415) 234-0581
www.petraclassjewelry.com
628 Jewelry



Namu Cho

Bethesda, MD
(301) 404-6789
www.studionamu.com
726 Jewelry



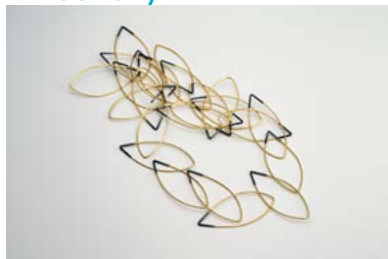
Judith Cohen, Seven Hills Bindery

Somerville, MA
(617) 851-6556
www.sevenhillsbindery.com
631 Paper



Hyungzee Choi

Raleigh, NC
(917) 478-0888
www.hyungzeechoi.com/www.beeshaus.com
727 Jewelry



Martha Collins

Sequim, WA
(360) 683-2678
www.studiomarthacollins.com
709 Jewelry & Wood



Directory of Exhibitors

Roberta Consalvo Sances*

Florence, Italy

www.robertaconsalvosances.com

513 Jewelry



Lisa & Scott Cylinder

Brunswick, ME

(610) 780-2331

www.lisaandscottcylinder.com

504 Jewelry & Mixed Media



Ursula Corsi*

Pietrasanta, Italy

www.mosaiciursulacorsi.it

521 Mixed Media



Alan Daigre

Woodbury, TN

(615) 713-7868

www.alandaigredesigns.com

500 Furniture



Deborah Cross & Gordon Heinel

Santa Cruz, CA

(831) 345-0262

www.deborahcross.com

700 Fiber Wearable



Kate Dannenberg

Philadelphia, PA

(215) 510 7231

www.katedannenberg.com

527 Jewelry & Metal



Directory of Exhibitors

Drew Darley

Avon, CT
(860) 402-1206
[www.roundtripclayworks.com/
drew-darley-portfolio](http://www.roundtripclayworks.com/drew-darley-portfolio)
632 Ceramics



Trefny Dix & Bengt Hokanson

East Hampton, NY
(631) 365-9730
www.boarglass.com
731 Glass



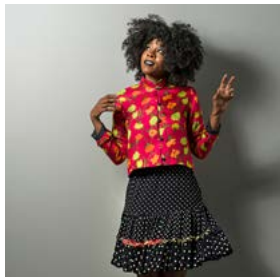
Chiara De Filippis*

Florence, Italy
www.chiaradefilippis.shop
519 Jewelry



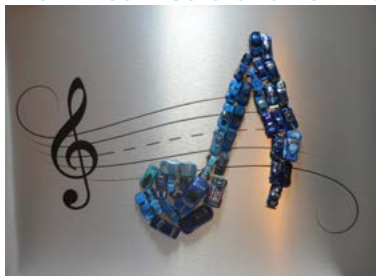
Marla Duran

Bethlehem, PA
(610) 392-5595
www.marladuran.com
108 Fiber Wearable



Giuseppe Di Fede*

Milan, Italy
www.avanguardiagldf.com
423 Mixed Media and Furniture



Shaya Durbin

Berkeley, CA
(510) 225-5169
www.shayadurbin.com
524 Jewelry



Directory of Exhibitors

Suzanna Espamer-Murrill

Philadelphia, PA

(717) 602-0659

www.ami-textiles.com

626 Emerging Artist-Fiber Wearable



Celia Feldberg

Philadelphia, PA

(978) 760-1498

www.celiafeldberg.com

723 Ceramics



Robert Farrell

Fort Atkinson, WI

(941) 408-3681

www.farrellsilver.com

402 Metal



Pietro Ferro and Riccardo Ferro*

Murano, Italy

www.pietroerickardoferro.com

511 Glass



Sara Federici*

Florence, Italy

www.sfceramica.com

318 Ceramics



Sebastiano Fischer*

Pantelleria, Italy

www.ceramichefischer.com

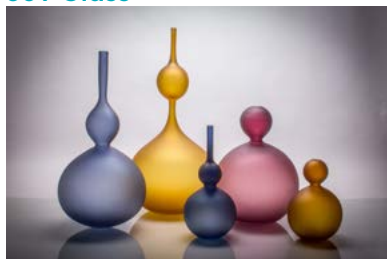
421 Ceramics



Directory of Exhibitors

J. Shannon Floyd

Brighton, MA
(978) 886-7096
www.jshannonfloyd.com
309 Glass



Diana Friend

Stuart Island, WA
(610) 745-1790
www.dianafriendbowls.com
124 Wood



Pat Flynn

High Falls, NY
(845) 687-4020
www.patflynninc.com
514 Jewelry



Jarrod Futscher

Charleroi, PA
(502) 316-4528
www.takttimedesign.com
407 Glass



Michele A. Friedman

Chicago, IL
(312) 810-2972
www.micheleafriedman.com
703 Jewelry



Pong Gaddi

Buffalo, NY
(716) 863-2217
www.pgaddi.com
311 Leather



Directory of Exhibitors

Kathleen Gaffey

Northfield, IL
(630) 290-6447
www.brimanddash.com
702 Fiber Wearable



Kristin Gereau

Waukesha, WI
414-704-7202
www.KGTextiles.com
729 Fiber Wearable



Amy Gallop & Doug Reilly

Fort Washington, PA
(215) 237-2340
www.spartancarry.com
619 Leather



Lorenzo Giannini*

Santarcangelo di Romagna, Italy
www.studiototipotente.com
420 Fiber Decorative



Alexandra Geller

Easthampton, MA
(781) 775-6090
www.alexandrageller.com
109 Ceramics



Betsy Grob Giberson

Warner, NH
(603) 731-5483
www.betsygiberson.com
322 Fiber Wearable



Directory of Exhibitors

Galen Gibson-Cornell

Philadelphia, PA
(660) 853-1209
www.galengibsoncornell.com
400 Paper



Enrico Girotti*

Verona, Italy
www.enricogirotti.com
517 Furniture and Mixed Media



Geoffrey Giles

Asheville, NC
(828) 280-4389
www.geoffreydgiles.com
210 Jewelry



Danielle Gori-Montanelli

Middlebury, VT
(802) 771-5489
www.studiodgm.com
100 Jewelry



Amy Gillespie

Orleans, MA
(617) 359-9973
www.amygillespiestudio.com
708 Fiber Decorative



Isabelle Gougenheim Designs

Chicago, IL
(312) 953 9097
www.isabellegougenheimdesigns.com
326 Fiber Wearable



Directory of Exhibitors

Joey Graci

Marquette, MI
(906) 235-0294
www.gracistudio.com
717 Wood



Ryan J. Greenheck

Spring City, PA
(607) 382-5326
www.ryanjgreenheck.com
119 Ceramics



Kathleen Grebe

Raleigh, NC
(919) 619-7066
www.boldstandard.com
615 Jewelry



Xinia Guan

Savannah, GA
(912) 318-4799
www.xiniaguan.com
710 Jewelry



Rob Greene

Marshfield, VT
(802) 238-2001
www.robgreenejewelry.com
424 Jewelry



Heather Guidero

Providence, RI
(718) 964-3011
www.heatherguidero.com
227 Jewelry



Directory of Exhibitors

Nicole Haddad & Jordan Haddad, Lobo Mau

Philadelphia, PA

(610) 764-9035

www.lobomau.com

126 Fiber Wearable



Joy Harvey*

Rimini, Italy

www.lalucegioielleria.com

320 Jewelry



Andrea Handy (Andrea Geer Designs)

Rochester, NY

(585) 739-7465

www.andreageerdesigns.com

104 Fiber Wearable



Barbara Heinrich & Timo Krapf

Pittsford, NY

(585) 383-1089

www.barbaraheinrichstudio.com

425 Jewelry



Thomas Harris

Bloomington, IN

(812) 345-4304

www.clayoh.com

406 Ceramics



Ingrid Heiss*

Bressanone, Italy

www.imetall.art

419 Metal



Directory of Exhibitors

Derek Hennigar

Columbus, NC
(828) 301-3822
www.ordinaryfurniture.com
508 Furniture



R. Jason Howard

Skaneateles, NY
(315) 560-6110
www.rjasonhoward.com
113 Glass



Thomas Herman

Stone Ridge, NY
(845) 853-6643
www.sevenfingers.com
314 Jewelry



Scott Hronich

Malta, NY
(805) 509-4497
www.internalfireglass.com
607 Glass



Elizabeth Holliday

Memphis, TN
(901) 485-1358
www.denovocoats.com
319 Fiber Wearable



Hughes Bosca LLC

Gloucester, MA
(617) 501-3930
www.hughesbosca.com
612 Jewelry



Directory of Exhibitors

Angela Humes

Philadelphia, PA
(717) 676-9599
www.ahumesceramics.com
221 Ceramics



Mary Jaeger

Brooklyn, NY
(917) 416-2686
www.maryjaeger.com
610 Fiber Wearable



Reiko Ishiyama

New York, NY
(646) 623-9771
www.reikoishiyama.com
206 Jewelry



Bashar & Roula Jarjour

Shippensburg, PA
(717) 387-9530
www.jarjourpottery.com
331 Ceramics



Peter Jacobson

Dresher, PA
(215) 275-8425
www.rareearthbowls.com
622 Emerging Artist-Wood



Bruce Jarrell, Metal Sculptures

Severna Park, MD
(410) 227-6754
www.hammerfireforge.com
633 Metal



Directory of Exhibitors

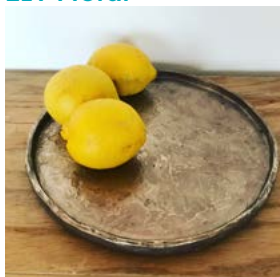
Devin Johnson

Northfield, MN
(952) 270-8284
www.makeshiftaccessories.com
130 Jewelry



Jennifer Joseph, Aerisbotanica

Springville, PA
(323) 542-5208
www.aerisbotanica.com
219 Metal



Ray Jones

Asheville, NC
(828) 230-3646
www.rayjoneswoodboxes.com
530 Wood



Audrey Jung

San Francisco, CA
(415) 317-1675
www.audreymodern.com
428 Fiber Wearable



Ryan Jones

Crestwood, KY
(502) 409-3504
www.rootsandjones.com
233 Mixed Media



Michael and Amanda Jury

Springfield, VA
(703) 598-7504
www.mjurywoodworks.com
526 Furniture



Directory of Exhibitors

Harold Kalmus

Arden, DE
(302) 529-1516
www.kalmusknives.com
605 Mixed Media



Ani Kasten

Shafer, MN
(240) 460-3008
www.anikasten.com
321 Ceramics



Wiwat Kamolpornwijit

Alexandria, VA
(703) 340-6690
www.wiwat-kamolpornwijit.com
704 Jewelry



Lori Katz

Alexandria, VA
(703) 475-1640
www.lorikatz.com
105 Ceramics



Selma Karaca

Beacon, NY
(917) 204-7755
www.selmakaraca.com
613 Fiber Wearable



Judith Kaufman

West Hartford, CT
(860) 214-1881
www.judithkaufman.com
510 Jewelry



Directory of Exhibitors

Nicholas Kekic

Bellows Falls, VT
(802) 875-1825
www.kekicglass.com
329 Glass



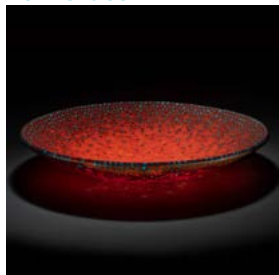
Christy Klug

Grand Rapids, MI
(512) 484-1805
www.christyklug.com
608 Jewelry



Robin Kittleson

Geneva, IL
(773) 497-3539
www.robinkittleson.com
102 Glass



Matt Kolbrener

Detroit, MI
(412) 613-0487
www.mattkolbrener.com
228 Glass



Ann Klem

Fisherville, KY
(502) 817-8635
www.annklem.com
218 Glass



Andy Koupal

Dearborn, MI
(248) 767-6613
www.andykoupal.com
214 Glass



Directory of Exhibitors

Andrew Krueger

Oostburg, WI
(920) 918-7134
www.andrewkruegerceramics.com
523 Ceramics



Aron Leaman

Lowell, MA
(978) 317-4756
www.aronleamanglass.com
509 Glass



Michelle Kwiecien

Philadelphia, PA
(518) 926-9769
www.mdk-studio.com
614 Emerging Artist-Metal



Cliff Lee

Stevens, PA
(717) 799-3654
www.cliffleporcelain.com
722 Ceramics



Elizabeth Landers

Brooklyn, NY
(917) 715-9198
www.lizlandersjewelry.com
409 Jewelry



Jeong Ju Lee

Rochester, NY
(585) 503-4416
www.jeongjulee.com
317 Jewelry



Directory of Exhibitors

Sergey Levchin

Brooklyn, NY
(917) 714-9610
www.seekingwaxwing.com
111 Furniture



Meg Little

Newport, RI
(401) 662-0283
www.meglittle.com
707 Fiber Decorative



David Levy

Davis, CA
(530) 758-6624
www.davidlevycreations.com
101 Furniture



Cinzia Li Volsi*

Sacile, Italy
417 Fiber Decorative



Lisa Limer & Johnnie Chace

Providence, RI
(401) 338-1073
www.belamonde.com
627 Fiber Wearable



Tara Locklear

Knightdale, NC
(252) 414-3366
www.taralocklearjewelryshop.com
324 Jewelry



Directory of Exhibitors

Sharon London & Carl Mateo

Saugerties, NY
(914) 466-5057
www.sharonlondon.com
202 Fiber Wearable



Zelma Loseke

Lutz, FL
(813) 943-8298
www.zelmaloseke.com
225 Basketry & Paper



Kari Lonning

Ridgefield, CT
(203) 431-0617
www.karilonning.com
719 Basketry



Stefania Lucchetta*

Bassano del Grappa, Italy
www.stefanialucchetta.com
413 Jewelry



Jorgelina Lopez & Marco Duenas

Baltimore, MD
(443) 527-0715
www.laloupedesign.com
110 Furniture



Amy Roper Lyons

Summit, NJ
(908) 468-8124
www.amyroperlyons.com
520 Mixed Media



Directory of Exhibitors

Christine H. MacKellar

Brooklyn, NY
(646) 301-9393
www.chmackellar.com
121 Jewelry



Lauren Markley

Raleigh, NC
(609) 240-7015
www.laurenmarkleyjewelry.com
302 Jewelry



Mariagioia Maffucci*

Pistoia, Italy
www.mariagioiamaffucci.it
422 Jewelry



Nick & Kristen Martier

Yardley, PA
(215) 932-7046
www.nickmartierwoodworker.com
220 Furniture



Matin Malikzada

New Milford, CT
(203) 648 1763
www.malikzadapottery.com
512 Ceramics



Ayesha Mayadas

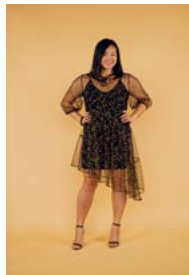
Southfield, MA
(585) 755-9866
www.ayeshastudio.com
305 Jewelry



Directory of Exhibitors

Valerie Mayen

Cleveland, OH
(361) 813-4308
www.yellowcakeshop.com
207 Fiber Wearable



Peter Meltzer, High Pass Woodworks

Fleetwood, PA
(610) 703-3618
www.highpasswoodworks.com
122 Furniture



Jennifer McCurdy

Vineyard Haven, MA
(508) 627-0443
www.jennifermccurdy.com
308 Ceramics



Graham Michael

Philadelphia, PA
(717) 440-5070
www.minervaenterprises.us
128 Furniture



Molly McLaughlin

Amherst, MA
(207) 415-6835
www.mollymclaughlinfiberart.com
115 Fiber Decorative



Nanako Miller

New York, NY
(646) 270-8222
www.nanakoclothes.com
201 Fiber Wearable



Directory of Exhibitors

Steve Miller

Black Mountain, NC
(305) 510-8910
www.naturesturnwoodturnings.com
304 Wood



Rebecca Myers

Baltimore, MD
(610) 704-7670
www.rebeccamyersdesign.com
429 Jewelry



Claudia Mills

Philadelphia, PA
(215) 806-7514
www.claudiamills.com
204 Fiber Decorative



Laszlo Nemes

Richmond, VA
(571) 393-5862
www.laszlosleather.shop
705 Leather



Holly Anne Mitchell

Indianapolis, IN
(317) 209-6158
www.newspaperjewelry.com
229 Jewelry



Vu Nguyen

Crozet, VA
(434) 806-9516
www.thedustworks.com
624 Emerging Artist-Mixed Media



Directory of Exhibitors

Kristina Nichols

Traverse City, MI
(231) 409-5919
www.justalittlewarped.com
408 Fiber Decorative & Wearable



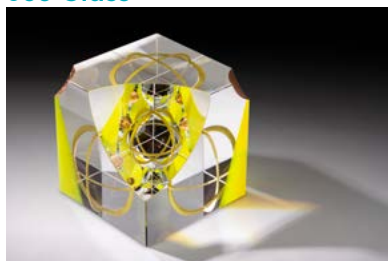
Liliana Olmos

Houston, TX
(832) 454-6326
www.olmox.com
223 Jewelry



Pavel Novak

Collingswood, NJ
(413) 687-5127
www.pavelnovakglass.com
603 Glass



Erich Orris

Cosby, TN
(865) 415-7234
www.fudoforge.com
213 Mixed Media



Yuh Okano

Chestertown, MD
(917) 463-8808
www.textilesyuh.com
426 Fiber Wearable



Susan Otterson

Madison, WI
(608) 770 0664
www.susanotterson.com
602 Fiber Wearable



Directory of Exhibitors

Gina Pannorfi

Chicago, IL
(773) 573-0970
www.ginapannorfi.com
103 Fiber Decorative & Fiber Wearable



James Pearce

Peoria, IL
(309) 303-6885
www.pearcewoodworks.com
411 Furniture



Keun Ho Peter Park

Philadelphia, PA
(814) 777-3342
www.studiospong.com
325 Furniture



Jane Pellicciotto

Portland, OR
(503) 317-2019
www.janepellicciotto.com
306 Jewelry



Robert Patterson

Milton, GA
(678) 232-4014
www.rpatterson.com
721 Wood



Ian M. Petrie

Philadelphia, PA
(651) 472-1802
www.ianmpetrie.com
217 Ceramics



Directory of Exhibitors

Emy Petrini*

Lucca, Italy

www.emypetrini.com

310 Furniture



Lynn & K Meta Reintsema

Malta, NY

(518) 587-1879

www.reintsemadesigns.com

208 Fiber Wearable



Stefano Puozuoli*

Calci, Italy

www.estebanland.it

418 Wood



Marcia Reiver

Rosemont, PA

(610) 812-2342

www.marciareiver.com

706 Ceramics



Baiyang Qiu

Palo Alto, CA

(650) 224-2791

www.baiyangjewelry.com

117 Jewelry



Sara Jo Renzulli

Elkton, MD

(410) 392-7653

www.cossetandlock.com

725 Fiber Decorative



Directory of Exhibitors

Mea Rhee

Silver Spring, MD
(301) 495-3793
www.goodelephant.com
609 Ceramics



Meghan Patrice Riley

Brooklyn, NY
(510) 717-1233
www.meghanpatriceriley.com
327 Jewelry



Chiara Ricardi*

Varese, Italy
414 Ceramics



Gretchen Romey-Tanzer

Orleans, MA
(508) 221-3992
www.tanzersfiberworks.com
724 Fiber Decorative



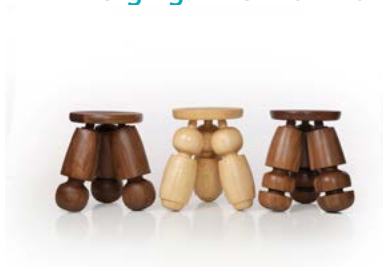
K. Riley

Havertown, PA
(610) 952-7442
www.krileywearableart.com
116 Fiber Wearable



Michael Rozell

Granville, OH
(614) 805-3098
www.woodenobjex.com
618 Emerging Artist-Furniture



Directory of Exhibitors

Jonathan Rutledge

Evanston, IL
(847) 738-4418
www.rutledgejewelry.com
106 Jewelry



Studio Art Quilt Associates (SAQA)

Hebron, CT
860-530-1551
www.saqa.com
600 Fiber Decorative



Hosseinali Saheb Ekhtiari & Maryam Rouhi

Kohler, WI
(917) 690-1398
www.maryandhoss.com
226 Ceramics



Savannah College of Art and Design

Jewelry Graduate Association
Savannah, GA
www.scadjewelrygraduateassociation.com
323 University Program



Georgette Wright Sanders

McClellanville, SC
(803) 319-6808
www.ByHisDesignLegaciesTiedBy-Nature.com
711 Basketry



Stenia Scarselli*

Pisa, Italy
www.steniagioielli.it
416 Jewelry



Directory of Exhibitors

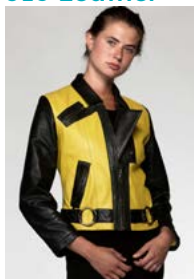
Kim Schalk

Alexandria, VA
(703) 622-8176
www.kimschalk.com
502 Fiber Wearable



Machteld Schrameyer

Hopkinsville, KY
(917) 832-2209
www.iotabluechip.com
518 Leather



Suzanne Schmid

Springfield, IL
(530) 908-9580
www.zanneavenue.com
505 Mixed Media



Susanne Schubert/Umsteigen

Brooklyn, NY
(347) 661-3469
www.iloveumsteigen.com
230 Fiber Wearable



Melissa Schmidt

Maplewood, MO
(314) 616-2092
www.melissaschmidtstudio.com
403 Jewelry



Bruce M. Schuettinger

ISFD Mosart, Inc.
Thurmont, MD
(301) 639-7520
www.mosartfurniture.com
300 Furniture



Directory of Exhibitors

Christine Rodrigues Schukow

Ellenville, NY

(845) 649-8904

www.christineoriginalsart.com

507 Mixed Media



Paula Shalan

West Stockbridge, MA

(413) 358-1843

www.paulashalan.com

630 Ceramics



Biba Schutz

New York, NY

(212) 947-3903

www.bibaschutz.com

611 Jewelry



Rachel Sherman

Huntingdon Valley, PA

(215) 200-2092

www.malaguetahandmade.com

606 Fiber Wearable



Liz Seru & John Truex

Owego, NY

www.boroughfurnace.com

215 Metal



Eric Silva

Whittier, CA

(562) 441-3788

www.ericssilva.com

604 Jewelry



Directory of Exhibitors

Jonathan Simons

Kempton, PA
(610) 756-6464
www.woodspoon.com
209 Wood



Carson Sio

Philadelphia, PA
(315) 406-5552
www.siometalworks.com
522 Metal



Morgan Sims

Philadelphia, PA
(206) 790-9589
www.morgan-sims.com
127 Glass



Bradford Smith

Lansdale, PA
(267) 664-2220
www.bradfordwoodworking.com
107 Furniture



Paz Sintes

Brooklyn, NY
(646) 761-7954
www.pazsintes.com
714 Jewelry



Cheryl Mackey Smith

Fairview, NC
(407) 929-8439
www.cmackeysmith.com
216 Ceramics



Directory of Exhibitors

Randi Solin

Brattleboro, VT

(802) 251-0989

www.randisolinglass.com

211 Glass



Kate Strano

Southbury, CT

(203) 206-4907

www.heddleoverheels.com

525 Fiber Wearable



Joy Stember

Abington, PA

(215) 806-1668

www.joystember.com

231 Metal



Eve Streicker

San Diego, CA

(401) 258-4892

www.originaleve.com

625 Jewelry



Wendy Stevens

Boyertown, PA

(610) 369-9265

www.wendystevens.com

516 Metal



Nicola Tessari*

Schio, Italy

www.nicolatessari.it

415 Wood



Directory of Exhibitors

Annalisa Tessarolo*

Vicenza, Italy
www.labucciadelcielo.com
312 Leather



Victoria Varga

Cumberland Foreside, ME
(207) 233-9488
www.victoriavarga.com
133 Jewelry



Sara Thompson

Portland, OR
(508) 431-4972
www.sara-thompson-metalsmith.com
405 Metal



Gabi Veit*

Bolzano, Italy
www.gabiveit.it
515 Metal



Toshiki and Maryszka

Lake Grove, NY
(212) 475-8324
www.toshikiandmaryszka.com
718 Leather



Babette von Dohnanyi*

Florence, Italy
www.babettevondohnanyi.com
316 Jewelry



Directory of Exhibitors

Valerie Walchek

Ocoee, FL
(321) 948-4700
www.littlewolfceramics.com
623 Ceramics



Jonathan White

Cape Elizabeth, ME
(207) 767-3835
www.oddinq.com
125 Ceramics



Stacey Lee Webber

Philadelphia, PA
(317) 363-7808
www.staceyleewebber.com
410 Metal & Mixed Media



Yuliya Wolf

Hartford, WI
(262) 397-7258
www.wolfleathers.com
200 Leather



Andrew J. Welton

Mars, PA
(724) 372-0870
[instagram.com/andrewjwelton](https://www.instagram.com/andrewjwelton)
616 Emerging Artist-Mixed Media



Liaung Chung Yen

Henrietta, NY
(585) 334-4513
www.liaungchungyen.com
123 Jewelry



Directory of Exhibitors

Stephen & Tamberlaine Zeh

Temple, ME

(207) 778-2351

www.tamberlaine.com

www.stephenzeh.com

720 Basketry & Jewelry



Exhibitor by medium

BASKETRY

- 719** Kari Lonning
225 Zelma Loseke
711 Georgette Sanders
720 Stephen & Tamberlaine Zeh

CERAMICS

- 120** Maria Albornoz
112 Lisa Belsky
713 Sandra Byers
712 Winthrop Byers
222 Teresa Chang
629 Dwo Wen Chen
632 Drew Darley
723 Celia Feldberg
109 Alexandra Geller
119 Ryan Greenheck
406 Thomas Harris
221 Angela Humes
331 Bashar & Roula Jarjour
321 Ani Kasten
105 Lori Katz
523 Andrew Krueger
722 Cliff Lee
512 Martin Malikzada
308 Jennifer McCurdy
217 Ian Petrie
706 Marcia Reiver
609 Mea Rhee
226 Hosseinali Saheb Ekhtiari & Maryam Rouhi
630 Paula Shalan
216 Cheryl Mackey Smith
623 Valerie Walchek
125 Jonathan White

EMERGING ARTIST

- 620** Teresa Audet -Mixed Media
626 Suzanna Espamer-Murrill
 -Fiber Wearable
622 Peter Jacobson -Wood
614 Michelle Kwiecien -Metal
624 Vu Nguyen -Mixed Media
618 Michael Rozell -Furniture

- 616** Andrew Welton
 - Mixed Media

FIBER DECORATIVE

- 404** Francisco & Laura Bautista
307 Ann Brauer
708 Amy Gillespie
707 Meg Little
115 Molly McLaughlin
204 Claudia Mills
408 Kristina Nichols
103 Gina Pannorfi
725 Sara Renzulli
724 Gretchen Romey-Tanzer
600 Studio Art Quilt Associates (SAQA)

FIBER WEARABLE

- 313** Elyse Allen
303 Jennifer Armstrong & Tanya Alsberg
131 Annie Bisone
205 Patrick Carrow
700 Deborah Cross & Gordon Heinel
108 Marla Duran
702 Kathleen Gaffey
729 Kristin Gereau
322 Betsy Grob Giberson
326 Isabelle Gougenheim
126 Nicole Haddad & Jordan Haddad
104 Andrea Handy
319 Elizabeth Holliday
610 Mary Jaeger
428 Audrey Jung
613 Selma Karaca
627 Lisa Limer
202 Sharon London & Carl Mateo
207 Valerie Mayen
201 Nanako Miller
408 Kristina Nichols
426 Yuh Okano

- 602** Susan Otterson
103 Gina Pannorfi
208 Lynn & K Meta Reintsema
116 K. Riley
502 Kim Schalk
230 Susanne Schubert/
 Umsteigen
606 Rachel Sherman
525 Kate Strano

FURNITURE

- 716** Christina Boy
506 Evan Chambers
500 Alan Daigre
508 Derek Hennigar
526 Michael Jury
111 Sergey Levchin
101 David Levy
110 Jorgelina Lopez &
 Marco Duenas
220 Nick Martier
122 Peter Meltzer
128 Graham Michael
325 Keun Ho Peter Park
411 James Pearce
300 Bruce Schuettinger,
 MosArt Inc.
107 Bradford Smith

GLASS

- 427** Anna Boothe
503 Pierre Bowring
715 Stephen Brucker
528 Marc Carmen
731 Trefny Dix &
 Bengt Hokanson
309 J Shannon Floyd
407 Jarrod Futscher
113 R. Jason Howard
607 Scott Hronich
329 Nicholas Kekic
102 Robin Kittleson
218 Ann Klem
228 Matt Kolbrener
214 Andy Koupal
509 Aron Leaman
603 Pavel Novak
127 Morgan Sims
211 Randi Solin

GUEST ARTISTS - Italy

- 412** Gian Luca Bartellone*
 - Jewelry
314 Patrizia Bonati* - Jewelry
513 Roberta Consalvo Sances*
 - Jewelry
521 Ursula Corsi* - Mixed Media
519 Chiara De Filippis* - Jewelry
423 Giuseppe Di Fede*
 - Mixed Media & Furniture
318 Sara Federici* - Ceramics
511 Pietro Ferro & Riccardo
 Ferro* - Glass
421 Sebastiano Fischer*
 - Ceramics
420 Lorenzo Giannini*
 - Fiber Decorative
517 Enrico Girotti* - Furniture &
 Mixed Media
320 Joy Harvey* - Jewelry
419 Ingrid Heiss* - Metal
417 Cinzia Li Volsi*
 - Fiber Decorative
413 Stefania Lucchetta*
 - Jewelry
422 Mariagioia Maffucci*
 - Jewelry
310 Emy Pettrini* - Furniture
418 Stefano Puzzuoli* - Wood
414 Chiara Ricardi* - Ceramics
416 Stenia Scarselli* - Jewelry
415 Nicola Tessari* - Wood
312 Annalisa Tassarolo*
 - Leather
515 Gabi Veit* - Metal
316 Babette von Dohnanyi*
 - Jewelry

JEWELRY

- 617** Debra Adelson
203 Jowita Allen
224 Belle Brooke Barer
621 Pam Caidin
232 Jennifer Chin
726 Namu Cho
727 Hyungzee Choi
628 Petra Class &
 Lucas Class-Knorr
709 Martha Collins
504 Lisa & Scott Cylinder

527 Kate Dannenberg
524 Shaya Durbin
514 Pat Flynn
703 Michele Friedman
210 Geoffrey Giles
100 Danielle Gori-Montanelli
615 Kathleen Grebe
424 Rob Greene
710 Xinia Guan
227 Heather Guidero
425 Barbara Heinrich & Timo Krapf
634 Thomas Herman
612 Mary Hughes & Caro-Gray Bosca
206 Reiko Ishiyama
130 Devin Johnson
704 Wiwat Kamolpornwijit
510 Judith Kaufman
608 Christy Klug
409 Liz Landers
317 Jeong Ju Lee
324 Tara Locklear
121 Christine MacKellar
302 Lauren Markley
305 Ayesha Mayadas
229 Holly Anne Mitchell
429 Rebecca Myers
223 Liliana Olmos
306 Jane Pellicciotto
117 Baiyang Qiu
327 Meghan Patrice Riley
106 Jonathan Rutledge
403 Melissa Schmidt
611 Biba Schutz
604 Eric Silva
714 Paz Sintes
625 Eve Streicker
133 Victoria Varga
123 Liaung Chung Yen
720 Stephen & Tamberlaine Zeh
LEATHER
311 Pong Gaddi
619 Amy Gallop & Doug Reilly
705 Laszlo Nemes
518 Machteld Schrameyer
718 Toshiki & Maryszka
200 Yuliya Wolf

METAL

212 Beehive Handmade (Dowd & Bonazoli)
527 Kate Dannenberg
402 Robert Farrell
633 Bruce Jarrell
219 Jennifer Joseph & Chris Collins
215 Liz Seru
522 Carson Sio
231 Joy Stember
516 Wendy Stevens
405 Sara Thompson
410 Stacey Lee Webber
MIXED MEDIA
504 Lisa & Scott Cylinder
233 Ryan Jones
605 Harold Kalmus
520 Amy Roper Lyons
213 Erich Orris
507 Christine Rodrigues-Schukow
505 Suzanne Schmid
410 Stacey Lee Webber

PAPER

315 Agathe Bouton
631 Judith Cohen
400 Galen Gibson-Cornell
225 Zelma Loseke

UNIVERSITY PROGRAM

323 Savannah College of Art and Design (SCAD)

WOOD

114 Nicholas Barnes
129 Fred Chase
118 Sarah Grace Cheek
709 Martha Collins
124 Diana Friend
717 Joe Graci
530 Ray Jones
304 Steve Miller
721 Robert Patterson
209 Jonathan Simons

*Italy Guest Artist

Exhibitor by booth number

100	Danielle Gori-Montanelli	200	Yuliya Wolf
101	David Levy	201	Nanako Miller
102	Robin Kittleson	202	Sharon London & Carl Mateo
103	Gina Pannorfi	203	Jowita Allen
104	Andrea Handy	204	Claudia Mills
105	Lori Katz	205	Patrick Carrow
106	Jonathan Rutledge	206	Reiko Ishiyama
107	Bradford Smith	207	Valerie Mayen
108	Marla Duran	208	Lynn & K Meta Reintsema
109	Alexandra Geller	209	Jonathan Simons
110	Jorgelina Lopez & Marco Duenas	210	Geoffrey Giles
111	Sergey Levchin	211	Randi Solin
112	Lisa Belsky	212	Beehive Handmade (Dowd & Bonazoli)
113	R. Jason Howard	213	Erich Orris
114	Nicholas Barnes	214	Andy Koupal
115	Molly McLaughlin	215	Liz Seru
116	K. Riley	216	Cheryl Mackey Smith
117	Baiyang Qiu Sarah	217	Ian Petrie
118	Grace Cheek Ryan	218	Ann Klem
119	Greenheck	219	Jennifer Joseph & Chris Collins
120	Maria Albornoz	220	Nick Martier
121	Christine MacKellar	221	Angela Humes
122	Peter Meltzer	222	Teresa Chang
123	Liaung Chung Yen	223	Liliana Olmos
124	Diana Friend	224	Belle Brooke Barer
125	Jonathan White	225	Zelma Loseke
126	Nicole Haddad & Jordan Haddad	226	Hosseinali Saheb Ekhtiari & Maryam Rouhi
127	Morgan Sims	227	Heather Guidero
128	Graham Michael	228	Matt Kolbrener
129	Fred Chase	229	Holly Anne Mitchell
130	Devin Johnson	230	Susanne Schubert/ Umsteigen
131	Annie Bisone	231	Joy Stember
133	Victoria Varga		

232	Jennifer Chin	408	Kristina Nichols
233	Ryan Jones	409	Liz Landers
300	Bruce Schuettinger- MosArt Inc.	410	Stacey Lee Webber
302	Lauren Markley	411	James Pearce
303	Jennifer Armstrong & Tanya Alsberg	412	Gian Luca Bartellone*
304	Steve Miller	413	Stefania Lucchetta*
305	Ayesha Mayadas	414	Chiara Ricardi*
306	Jane Pellicciotto	415	Nicola Tessari*
307	Ann Brauer	416	Stenia Scarselli*
308	Jennifer McCurdy	417	Cinzia Li Volsi*
309	J Shannon Floyd	418	Stefano Puzzuoli*
310	Emy Petrini*	419	Ingrid Heiss*
311	Pong Gaddi	420	Lorenzo Giannini*
312	Annalisa Tessarolo*	421	Sebastiano Fischer*
313	Elyse Allen	422	Mariagioia Maffucci*
314	Patrizia Bonati*	423	Giuseppe Di Fede*
315	Agathe Bouton	424	Rob Greene
316	Babette von Dohnanyi*	425	Barbara Heinrich & Timo Krapf
317	Jeong Ju Lee	426	Yuh Okano
318	Sara Federici*	427	Anna Boothe
319	Elizabeth Holliday	428	Audrey Jung
320	Joy Harvey*	429	Rebecca Myers
321	Ani Kasten	500	Alan Daigre
322	Betsy Grob Giberson	502	Kim Schalk
323	SCAD Jewelry Graduate Association	503	Pierre Bowring
324	Tara Locklear	504	Lisa & Scott Cylinder
325	Keun Ho Peter Park	505	Suzanne Schmid
326	Isabelle Gougenheim	506	Evan Chambers
327	Meghan Patrice Riley	507	Christine Rodrigues-Schukow
329	Nicholas Kekic	508	Derek Hennigar
331	Bashar & Roula Jarjour	509	Aron Leaman
400	Galen Gibson-Cornell	510	Judith Kaufman
402	Robert Farrell	511	Pietro Ferro & Riccardo Ferro*
403	Melissa Schmidt	512	Matin Malikzada
404	Francisco & Laura Bautista	513	Roberta Consalvo Sances*
405	Sara Thompson	514	Pat Flynn
406	Thomas Harris	515	Gabi Veit*
407	Jarrold Futscher	516	Wendy Stevens
		517	Enrico Girotti*
		518	Machteld Schrameyer

519	Chiara De Filippis*	629	Dwo Wen Chen
520	Amy Roper Lyons	630	Paula Shalan
521	Ursula Corsi*	631	Judith Cohen
522	Carson Sio	632	Drew Darley
523	Andrew Krueger	633	Bruce Jarrell
524	Shaya Durbin	634	Thomas Herman
525	Kate Strano		
526	Michael Jury	700	Deborah Cross & Gordon Heinel
527	Kate Dannenberg	702	Kathleen Gaffey
528	Marc Carmen	703	Michele Friedman
530	Ray Jones	704	Wiwat Kamolpornwijit
600	Studio Art Quilt Associates	705	Laszlo Nemes
602	Susan Otterson	706	Marcia Reiver
603	Pavel Novak	707	Meg Little
604	Eric Silva	708	Amy Gillespie
605	Harold Kalmus	709	Martha Collins
606	Rachel Sherman	710	Xinia Guan
607	Scott Hronich	711	Georgette Sanders
608	Christy Klug	712	Winthrop Byers
609	Mea Rhee	713	Sandra Byers
610	Mary Jaeger	714	Paz Sintes
611	Biba Schutz	715	Stephen Brucker
612	Mary Hughes & Caro-Gray Bosca	716	Christina Boy
613	Selma Karaca	717	Joe Graci
614	Michelle Kwiecien	718	Toshiki & Maryszka
615	Kathleen Grebe	719	Kari Lonning
616	Andrew Welton	720	Stephen & Tamberlaine Zeh
617	Debra Adelson	721	Robert Patterson
618	Michael Rozell	722	Cliff Lee
619	Amy Gallop & Doug Reilly	723	Celia Feldberg
620	Teresa Audet	724	Gretchen Romey-Tanzer
621	Pam Caidin	725	Sara Renzulli
622	Peter Jacobson	726	Namu Cho
623	Valerie Walchek	727	Hyungzee Choi
624	Vu Nguyen	729	Kristin Gereau
625	Eve Streicker	731	Trefny Dix & Bengt Hokanson
626	Suzanna Espamer-Murrill		
627	Lisa Limer		
628	Petra Class & Lucas Class-Knorr		

*Italy Guest Artist

1919 IS PROUD TO SUPPORT

The 48th Annual Philadelphia Museum of Art

CONTEMPORARY CRAFT SHOW

For over a century, 1919 has been delivering services and tailored solutions that preserve, build, and manage wealth. We are committed to helping our clients achieve their financial goals with thoughtful advice.



1919

INVESTMENT
COUNSEL
Complexity to Clarity

www.1919ic.com

BALTIMORE • BIRMINGHAM • CINCINNATI • NEW YORK • PHILADELPHIA • SAN FRANCISCO • VERO BEACH

Osage Partners

IS A PROUD SUPPORTER
OF THE 48TH ANNUAL
PHILADELPHIA MUSEUM
OF ART CRAFT SHOW!



OVP partners with exceptional entrepreneurs building the next generation of leading B2B software companies with a focus on innovative and transformative future of work and future of education companies.



Osage University Partners invests in all stages of startups that are based on academic research, led by visionary entrepreneurs, and targeting large market opportunities.



is proud to support

**THE 48TH ANNUAL
PHILADELPHIA
MUSEUM OF ART
CONTEMPORARY
CRAFT SHOW**

The Maguire Foundation is committed to improving the quality of life for people and educating the next generation of leaders. Founded by James J. and Frances M. Maguire and grounded in the teachings of St. Ignatius Loyola that we are men and women for others, the Maguire Foundation invests in education, arts and humanities, and the relief of hunger and homelessness.

Congratulations
to the Craft Show
Committee on
another fabulous
show.





Outsourced Chief Investment Officers
Serving Families, Foundations,
and Pensions since 2006.

Mill Creek is proud
to support the
Philadelphia Museum
of Art Craft Show.

millcreek.com

This sponsorship should not be construed as an endorsement or testimonial of Mill Creek Capital Advisor's investment advisory services.

CRAFT YOUR PMA EXPERIENCE



Join the Associates and Chairman's Council

A community of philanthropic leaders united by their dedication to the PMA

Make a meaningful impact while enjoying unparalleled access to one-of-a-kind events, curator-led experiences, private tours, and so much more! The Associates and Chairman's Council is a dynamic group that provides vital support to ensure all visitors can find inspiration and belonging at the museum.

To learn more or join, contact us at **215-684-7766**,
associates@philamuseum.org, or philamuseum.org/associates.



Philadelphia
Museum of
Art

Corient is Proud to Support the Philadelphia Museum of Art



Justin Spike, CPA, CFP®

Partner, Wealth Advisor

610.975.0314

justin.spike@corient.com

Advisory services are offered through Corient Private Wealth LLC and its affiliates, each being a registered investment adviser ("RIA") regulated by the U.S. Securities and Exchange Commission ("SEC"). For a complete discussion of the scope of advisory services offered, fees, and other disclosures, please review the RIA's Disclosure Brochure (Form ADV Part 2A) and Form CRS, available upon request from the RIA and online at <https://adviserinfo.sec.gov/>.

corient.com

CORIENT



Morgan Stanley is proud to support

The Philadelphia Museum of Art Contemporary Craft Show

Frank Coulson, Ryan Flynn and Brian Bernhardt CFP®

Managing Director – Wealth Management

Private Wealth Advisor

100 Front Street

West Conshohocken, PA 19428

+1 610 260-7575

pcg_team@morganstanleypwm.com

<https://advisor.morganstanley.com/the-plymouth-creek-group>

Cozen O'Connor is proud to support the 48th Annual Philadelphia Museum of Art Craft Show.



Michael J. Heller

Executive Chairman & CEO
(215) 665-4141
mheller@cozen.com

Vincent R. McGuinness

President & Managing Partner
(215) 665-2097
vmcguinness@cozen.com

Melissa M. Grossman

Co-Chair, Private Client,
Trusts and Estates
(215) 665-4641
mgrossman@cozen.com

850 attorneys | 33 offices | cozen.com

© 2024 Cozen O'Connor

**Proud to
support**

the 48th Annual
Philadelphia
Museum of Art
Craft Show.

THE
McCAUSLAND
FOUNDATION

Proud supporter of

THE
48TH
ANNUAL
PHILADELPHIA
MUSEUM
OF ART

CONTEMPORARY
**CRAFT
SHOW**

THE
FRANK
FINANCIAL CONSULTING GROUP
of Wells Fargo Advisors

STEPHEN G. FRANK

*Private Wealth Financial Advisor
Managing Director – Investment Officer*

Tel 610-940-2043 | 1-800-333-0202 | stephen.frank@wfa.com

DEREK R. BROOKS, CFP®

Senior Vice President - Investment Officer

Tel 610-832-7655 | Cell 610-897-7632 | derek.brooks@wfa.com

JACK FLORIO, CFP®

Associate Vice President - Investment Officer

Tel 610-832-7641 | jack.florio@wfa.com

One Fayette Street | Two Tower Bridge, Suite 200 | Conshohocken, PA 19428

fa.wellsfargoadvisors.com/frank-financial



Own Your Retirement!



*"The carefree retirement lifestyle
at Beaumont allows me to pursue my passion."*

— Resident since 2017

All of us at Beaumont are proud to
support the Philadelphia Craft Show
and the many participating artists.



A Vibrant, Resident-Owned Retirement Community



601 N. Ithan Avenue, Bryn Mawr, PA 19010





PROUD TO SUPPORT

*the 48th Annual Philadelphia
Museum of Art Craft Show.*





CRAFT IN AMERICA

NEW EPISODES STREAMING TUESDAY, NOVEMBER 12
ON THE PBS APP, CRAFTINAMERICA.ORG, PBS.ORG/CRAFTINAMERICA

PBS BROADCAST PREMIERE & STREAMING ON YOUTUBE
FRIDAY, DECEMBER 27, 2024 (CHECK LOCAL LISTINGS)

SCIENCE investigates the unexpected intersection between art and the sciences.

Featuring: Erik & Martin Demaine, John Luebtow, Chris Maynard, Karen Nyberg, Joan Takayama-Ogawa, and Joseph & Sergio Youngblood Lugo.



COLLECTORS reveals the relationship between craft collectors and the artists they support.

Featuring: Fleur Bresler, Judith Chernoff & Jeffrey Bernstein, Yolanda González, Sonny & Gloria Kamm, Cynthia Lockhart, Cheech Marin, Carolyn Mazloomi, Francisco Palomares, Frank Romero, Norm Sartorius, Peter Shire, Sara Vance Waddell, Jaime "Germs" Zacarias, and the American Craft Council marketplace.



craftinamerica.org

pbs.org/craftinamerica

[@craftinamerica](https://twitter.com/craftinamerica)

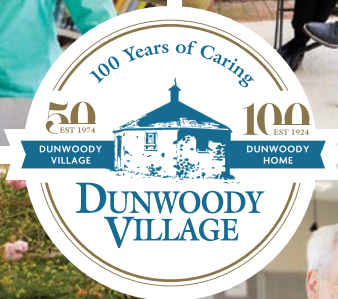


CONGRATULATIONS TO THE WOMEN'S COMMITTEE



GRAVERS LANE GALLERY

WHERE BEAUTY IS
FOUND IN THE DETAILS
OBJECTS MADE BY HAND,
GIFTED FROM THE HEART



100 Years and Counting

This year, Dunwoody Village celebrates 100 years of caring, first as the Dunwoody Convalescent Home that opened in 1924 and then, in 1974, as one of the first continuing care retirement communities in the Delaware Valley. It takes fortitude and vision — and adaptability — to withstand the test of time. While we pay homage to our cherished past, we celebrate our enduring commitment to excellence, forging a legacy that will endure for generations to come. We invite you to become a part of our vibrant community. Contact us today.

(610) 359-4400 | www.dunwoody.org
3500 West Chester Pike • Newtown Square, PA 19073

Independent Living • Rehabilitation • Personal Care • Skilled Nursing • Memory Support • Home Care



Pet Friendly

A Continuing Care Retirement Community

★★★★★ Five-Star Rated Healthcare

YOUR PMA, YOUR LEGACY



Help shape the future of Philadelphia's art museum.

Join the Fiske Kimball Society

Legacy gifts, particularly those to the endowment, make a difference at PMA that lasts far beyond your lifetime. As the museum enters a new era, opening our doors to all Philadelphians, you will have a powerful effect on our future by including the museum in your estate plans.

Your planned gift will be recognized with membership in the Fiske Kimball Society. For more information, contact Tara Prakash at 215-684-7351 or tara.prakash@philamuseum.org.

Philadelphia
Museum of
Art



UNITING, SUPPORTING AND CELEBRATING PHILADELPHIA'S CRAFT COMMUNITY

PROUD TO SUPPORT

**THE 48TH ANNUAL PHILADELPHIA
MUSEUM OF ART CONTEMPORARY
CRAFT SHOW**

Follow us on social media!



@craftnowphl



CraftNOWPhiladelphia

To learn more
flash the QR code



www.craftnowphila.org

PROUDLY SUPPORTING

**Ami Lonner and the Women's Committee of the
Philadelphia Museum of Art**

*Congratulations on assembling another amazing
gathering of contemporary artists and their works.*

Co-Presidents, Stephen and Alan Cohn
Principal, John Sion

SAGE
FINANCIAL GROUP

SAGE
FINANCIAL GROUP

THE
48TH
ANNUAL
PHILADELPHIA
MUSEUM
OF ART

**CONTEMPORARY
CRAFT
SHOW**

Recognized by Barron's as one of the nation's top financial advisors (3/8/2024) for the 2023 calendar year.*
98% client and team member retention.

Our client retention rate is calculated annually and based on one year. Our team member retention rate is calculated annually and reflects the average of five years. We adjust either number when the change in direction is equal to or exceeds 2%. *For disclosures regarding ranking limitations, visit www.sagefinancial.com/accolades.

300 Barr Harbor Drive, Suite 200, West Conshohocken | 484-342-4400 | www.sagefinancial.com



wayne art center

CRAFTFORMS 2024

29th International Juried Exhibition of Contemporary Fine Craft

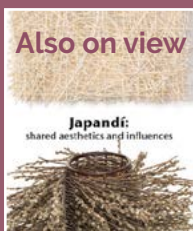
**December 7, 2024-
January 25, 2025**

Featuring contemporary
works in ceramics, wood,
fiber, metal, glass,
mixed media and 3D printing.



GH Wood,
Adoptee's Imitation

PREVIEW PARTY & CRAFTFORMS AWARDS
December 6 | 6-10 pm



Japandi Revisited: ***shared aesthetics and influences***

Japandi Revisited will feature contemporary
fiber and ceramic work by artists from Japan,
Denmark, Norway, Sweden, and Finland.
Presented by *browngrotta arts of Wilton, CT.*

December 7, 2024 | 1-4pm

Japandi Revisited Curators' Talk, *CraftForms*
Juror's Talk, *CraftForms* Meet the Artists



craftforms.org

413 Maplewood Avenue ■ Wayne, PA 19087 ■ 610-688-3553

THE PHILADELPHIA SHOW

ANTIQUES • ART • DESIGN

SAVE THE DATE

April 25–27, 2025

Preview Party April 24

thephiladelphiashow.com

HANDWORK *Celebrating American Craft 2026*

an initiative of

 **CRAFT IN AMERICA**

HANDWORK: CELEBRATING AMERICAN CRAFT 2026 will be a year-long Semiquincentennial collaboration among organizations, educators, and makers to showcase the importance of the handmade and celebrate the diversity of the crafts that define America, both throughout our history and in contemporary life.



Nationwide Exhibitions & Community Events

Core Exhibition at the Renwick Gallery of the Smithsonian American Art Museum
4-Part Documentary Film Series & Digital Content on PBS
Book exploring the craft continuum over the span of American culture
Educational Components for K–12 and lifelong learners
Website & Interactive Map for all **HANDWORK 2026** Events

To join the celebration, please contact handwork2026@craftinamerica.org.



HANDWORK 2026 Lead Partners: *Craft in America, Smithsonian American Art Museum*

HANDWORK 2026 Partners: *American Craft Council, Americans for the Arts, Craft Emergency Relief Fund, James Renwick Alliance for Craft, Ornament Magazine, PBS, Veterans History Project*

For a full list of organizations participating in **HANDWORK 2026**, please visit www.handwork2026.org.

PHOTOS (Top l-r): Barbara Teller Ornelas weaving in Canyon de Chelly, courtesy of Mark Markley; Stephen Burks with Berea College student Joseph Tayo Opaleye, courtesy of Berea College; Syd Carpenter building with clay, courtesy of Denise Kang. (Bottom l-r): Ofelia Esparza creating the community altar; Dante Marioni blowing glass; Yoshiko Yamamoto at the printing press, bottom row photos courtesy of Mark Markley.



Studio Art Quilt Associates is a nonprofit membership organization of more than 4,000 artists who create in fabric and stitch. Thank you to the PMA Craft Show for this opportunity. We are delighted to be able to share our art with all the visitors to the 2024 Show.

Martha Sielman
SAQA Executive Director

The Studio Arts Quilt Associates (SAQA) quilt collective booth is made possible with funding from the Estate of Nancy M. McNeil

SAQATM
STUDIO ART QUILT
ASSOCIATES

BOOTH 600

saqa.com





BEACON POINTE



Two Bala Plaza
Suite 806
Bala Cynwyd, PA 19004

jsteinberg@beaconpointe.com
(610) 664-6100

*all*WEALTH®

Aligning your wealth
with what matters most

We address all aspects
of financial well-being for our
clients by providing access to:

- Institutional Quality Investments
- Life & Legacy Planning
- Impact Initiatives
 - Values-Based Investing
 - Women's Advisory Institute

Ellen Mears Kennedy



Art in Handmade Paper . . .

. . . hundreds of individually made pieces of artist-made paper, each color unique, a subtle gradation of richly pigmented pulp.

Like a meditation, repeating and yet changing, the art work represents a transformation, moments in time, manifested in color, a celebration of the whole.

Horizon Blues
25" w x 37" h x 3.5" d

ellenmearskennedy.com
emearskenn@aol.com

MobileHomeLLC|A.I.M.



Logistics for the Artisan and Collector

tel.860-964-9163

www.artmoves.biz

The Partners at SD Associates, P.C.
are Proud to Support The 48th Annual
Philadelphia Museum of Art Craft Show



Certified Public Accountants & Business Advisors

Steven Caine, CPA, MST, Shareholder

SD Associates, P.C.

300 Yorktown Plaza Elkins Park, PA 19027

215-517-5600 | scaine@sdaccounting.com



ROTHMAN
ORTHOPAEDICS

MOVE FREELY. TRUST FULLY.



Proud to Support the Philadelphia Museum of Art Contemporary Craft Show

MyRothmanStory.com | 833.308.2554

La Famiglia MARK SFIRRI

11.01.24 – 02.16.25



Scan code for
more information.



Museum for
Art in Wood





BRIM + DASH

MILLINERY

BOOTH 702



"Tipped II"
Madrone burl with multiple ties.

Diana Friend Bowls // **Booth 124** // dianafriendbowls.com

📷 *What-the-Wood-Wants* // dianafriendbowls@gmail.com

BARBARA HEINRICH TIMO KRAPF

BOOTH 425

Simply Beautiful.



Bruce Schuettinger | ISFD, Mosart, Inc. | Booth 300
mosartfurniture.com | 301-639-7520 | Thurmont, MD

*"Secret Spirits" Liquor Cabinet
Contains 4 secret compartments / mixed exotic wood*

ART
BY
HAND



See you here
next year!

THE
49TH
ANNUAL
PHILADELPHIA
MUSEUM
OF ART

CONTEMPORARY
CRAFT
SHOW

APPLICATION PERIOD: DECEMBER 20, 2024 - APRIL 1, 2025

November 7-9, 2025

Preview Party November 6

Pennsylvania
Convention
Center

pmacraftshow.org



JEFF CITY BLOCK

EXPERT REAL ESTATE REPRESENTATION



**I am Honored to Support the 48th Annual
Philadelphia Museum of Art Contemporary Craft Show.**

Jeff Block
Associate Broker, Esquire

jeff@jeffcityblock.com
M 215.833.7088 | O 267.435.8015
cityblockteam.com

Jeff "City" Block is a real estate licensee affiliated with Compass RE. Compass RE is a licensed real estate broker and abides by equal housing opportunity laws. #eq

COMPASS RE

The 48th Annual Philadelphia Museum of Art Craft Show is produced by The Women's Committee and the Craft Show Committee of the Philadelphia Museum of Art

Past Chairs of the Philadelphia Craft Show

1977	Mrs. Thomas T. Fleming	1998	Ellen Simon
	Mrs. William C. Lowry III	1999	Mrs. Richard Rothman
1978	Mrs. Thomas T. Fleming	2000	Mrs. Robert A. Fox
	Mrs. William C. Lowry III	2001	Elissa G. Topol
1979	Mrs. Robert L. McNeil, Jr.	2002	Katharine A.S. Padulo
	Mrs. William C. Lowry III	2003	Linda G. Fuller
	Mrs. William C. Lowry IV	2004	Joan R. Momjian
1980	Mrs. Robert L. McNeil, Jr.	2005	Sally G. Sharkey
1981	Mrs. Robert L. McNeil, Jr.	2006	Cathy Altman
1982	Mrs. C. Marshall Lamason	2007	Susan M. Zelouf
	Mrs. William C. Lowry IV	2008	Eve Walker
	Mrs. Collin F. McNeil	2009	Amy A. Fox
1983	Mrs. I. Wistar Morris III	2010	Marta Adelson
1984	Mrs. I. Wistar Morris III	2011	Reid N. Bodek
1985	Mrs. Donelson R. Manley	2012	Lisa Woolbert
1986	Mrs. Donelson R. Manley	2013	Laura Rothrock
1987	Mrs. John J. F. Sherrerd	2014	Carol Blank Barsh
1988	Mrs. Leonard Klorfine	2015	Ellen Caplan
1989	Mrs. Stephen R. Jacobs	2016	Gwen Goodwill Bianchi
1990	Mrs. Edward S. Madara, Jr.	2017	Pam Yih
1991	Mrs. Christopher H. Gadsden	2018	Michele V. Brotman
1992	Mrs. Alfred W. Putnam, Jr.	2019	Anja Levitties
1993	Mrs. Harold W. Pote	2020	Robin Blumenfeld Switzenbaum
1994	Mrs. John A. Affleck	2021	Sally Sharkey
1995	Beverly M. Wilde	2022	Melissa Clark
1996	Mrs. Morgan R. Jones	2023	Ami Lonner
1997	Mrs. Robert W. Connor		

Directors

Anja Levitties, *Chair*
Marta Adelson*
Carol Blank Barsh*
Janice Block*
Michele Brotman
Kristine Christensen*
Melissa Clark

Ami Lonner*
Katharine Padulo
Laura Rothrock
Pam Yih
Susan Zelouf*

*ex-officio

Craft Show Committee Members

Kristine Christensen, *Show Chair*

Janice Block, *Show Vice-Chair*

Susan Charleston, *Show Treasurer*

Anja Levitties, *Chair, Craft Show Directors*

Marta Adelson, *Women's Committee President*

Nancy O'Meara, *Craft Show Manager*

Cathy Altman

Jill Aschkenasy

Carol Blank Barsh

Bruce Baumstein

Gwen Goodwill Bianchi

Ilene Blain

Charlotte Blankfield

Robin Blumenfeld

Reid N. Bodek

Lisette Bralow

Kay Braun

Michele Brotman

Gigi Bruce

Ellen Caplan

Mary Ann Chou

Melissa Clark

Candace Coleman

Veronica M. Connor

Bonnie Derr

Jacqueline Dickman

Linda Dooney

Kim Emmons-Benjet

Kirstin Engelman

Margo Eremus

Amy A. Fox

Penny Fox

Linda G. Fuller

Clare Fullerton

Eleanore H. Gadsden

Angela Gatto-Rekant

Frances Gerson

Barbara L. Gross

Barbara S. Gross

Jeanne Hollander

Suzanne C. Jacobs

Carol W. Jones

Mary Kahn

Magen Kauffman

Debbie Kelly

Julie Kronfeld

Emilie Lapham

Myrna Levin

Anita Lockhart

Ami Lonner

Linda Matrunch

Paige McAfee

Joan R. Momjian

Katharine A.S. Padulo

Zoe Pappas

Barbara Podell

Sue Pohanka

Judy C. Pote

Olivia Rabe

Venetta R. Robinson

Eve Prensky Roe

Ann Dee Rome

Marsha W. Rothman

Laura Rothrock

Francyn Elion Sacks

Mary Ellen Schneider

Randy Schwartz

Liz Shapiro

Sally Sharkey

Genvieve Shields

Amy Silverman

Ellen B. Simon

Lenee Stein

Keith Straw

Michelle Tate

Elissa G. Topol

Nancy Uffner

Susan Vitale

Donna Walker

Eve Walker

Beverly M. Wilde

Lisa Williamson

Pam Yih

Susan Zelouf

SPECIAL THANKS TO OUR 2024 JURORS

Michael Connelly, Phoenixville, PA, Ceramic Artist, and Teacher

Michael is a potter in Phoenixville and Philadelphia (Brewerytown), as well as Assistant Professor at Montgomery County Community College in Blue Bell, Pennsylvania. In 2010, he founded the Bailey Street Arts Corridor in the Brewerytown neighborhood of Philadelphia. His utilitarian pottery is in the permanent collections of the China Yaoware Museum, the Alfred Ceramic Art Museum, Asheville Art Museum, American Museum of Ceramic Art, Huntington Museum or Ceramic Art and Long Beach Museum of Art.

Christopher Darway, Feasterville-Trevose, PA, Artist, Designer, and Teacher

Chris has been working in metals for over 40 years as a designer, teacher and artisan. He currently teaches at the Wayne Art Center, Wayne, PA. Over the years he has sold and exhibited work through galleries, shops and craft shows, including ACC and Smithsonian Craft Shows. He is a two-time recipient of the New Jersey State Council of the Arts Award. Work has been exhibited in Germany, Japan (International Pearl Design Contest, prize winner) and England. He has taught at the University of the Arts, University of Delaware, and Montclair State University, NJ.

Lindsay Ketterer Gates, Farmington, PA, Artist, Executive Director, Touchstone Center for Crafts

For over 20 years Lindsay has been a studio artist whose work is in the permanent collection of the American Embassy in the Republic of Djibouti, The Museum of Art and Design in NYC, Yale University Art Gallery as well as other international collections. Her work was on tour in the exhibition 'Rooted, Revived, Reinvented: Basketry in the 21st Century'. Lindsay is the past vice-president of the board of directors of the National Basketry Organization, a past member of the Fiberarts Guild of Pittsburgh's Board of Directors, and currently the Board Secretary of Go Laurel Highlands.

Monica Hampton, Stanfordville, NY, Executive Director, The Furniture Society

Monica has had a lifelong interest in the arts and education. Her background is a combination of fine arts, art history, education, and public outreach, with an emphasis on program development for museums and organizations specializing in history, fine art, craft, and design. As an independent consultant, she produced the American Craft Council's 2016 conference among other cultural gatherings. Monica served as the Director of Education at The Society of North American Goldsmiths (SNAG) and was formerly the Director of Education at the American Craft Council (ACC).

Amy Schwartz, Corning, NY, Artist, Director of The Studio, Corning Museum of Glass

Amy has brought many of the world's leading artists working in glass to teach, lecture, and create their own work at The Studio. She has forged ties with leading contemporary glass artists and created a community of artists and glass makers around The Studio. She has conceived, implemented, and raised funds for several artist residency programs and scholarships at The Studio and created multiple video series that explain the properties of glass and demonstrate glassmaking techniques. An artist working in glass herself, she sells her work in the Corning Museum's shops and in galleries.

2024 Craft Show

Best of Show

\$1,500

Sponsored by the Fleming Family in honor of Fifi Fleming and Mary Lee Lowry.

National Awards

The Philadelphia Museum of Art Craft Show gratefully acknowledges the generosity of the following organizations in awarding prizes in the amount of \$1,000 to individual craft artists:

- The Eric Berg Prize for Excellence in Metal
- The Louise K. Binswanger Prize for Best Artist New to the Show
- The Cohn Family Trust Prize for Excellence in Glass
- The Prize for Excellence in Fiber Art
- The Jane and Leonard Korman Family Prize for Excellence in Clay
- The Levitties Family Prize for Excellence in Design
- The Ornament Magazine Prize for Excellence in Art to Wear
- The Prize for Excellence in Jewelry
- The Wharton Esherick Museum Prize for Excellence in Wood

Thank you to our PREVIEW PARTY PATRONS for their generous support, 2024.

VISIONARY

Marta and Robert Adelson
Catherine K. Altman
Kristine Christensen
Amy Fox and Daniel Wheeler

Penny Fox
Rite Rug Co
Sally G. Sharkey

ANGEL

Janice and Arthur Block
Beth and William Landman
Martha H. and I. Wistar Morris III
Zoë S. Pappas
Barbara A. Podell and Mark G. Singer

Sue Pohanka and Jay Madden
Marsha W. Rothman
Laura and Kirk Rothrock
Robin and Mark Rubenstein
Elissa Topol and Lee Osterman
Harriet and Larry Weiss

BENEFACTOR

Abacus Planning Group
Dr. and Mrs. Todd Albert
Dennis Alter
Jill and Paul Aschkenasy
Sally and Devin Aronstam
Andrea Baldeck, M.D
Carol and Horace Barsh
Jonathan Bassman Interior Design
Connie and Donald Berg
Julie C. and Lawrence H. Berger
Gwen Goodwill Bianchi
Barbara Binis
Judith Block
Robin Blumenfeld
Jill and Sheldon Bonovitz
Lois G. and Julian A. Brodsky
Michele and Jeff Brotman
Ellen and Ron Caplan
Mary Ann and George Chou
Melissa and David Clark
Shirley and Gene Cordes
Carolyn and Mitchell Davis
Joe Dougherty, Buchanan Ingersoll & Rooney
Michelle and Eugene Dubay
Peter C. Egan
Kim Emmons-Benjet and Brian Benjet
Kirstin and Jeffrey Engelman
Frances R. and William A. Graham, IV
Anne Hamilton
Hannah L. Henderson
Margie and Jeffrey Honickman
Ruth and Richard Horowitz
Andrea Johnson and Chuck Ziccardi
Cynthia Lee Johnson
Arthur M. Kaplan and R. Duane Perry
Marina Kats and The Honorable John J. Medveckis

Sharon and Joseph Kestenbaum
Judy and Peter Leone
Anja and Matthew Levitties
Dana and John Levitties
Maxine de S. Lewis
Nini and Gary Lightman
Ami and Jess Lonner
Katharine and Louis Padulo
Helen and David Pudlin
The Quaker City Foundation
Lizabeth and Stephen Raynes
Drs. Angela and Mark Rekant
Jennifer Rice and Michael Forman
Lisa Roberts and David Seltzer
Ann Dee and Joel Rome
Lyn M. Ross
Amy and Bob Silverman
Ellen B. Simon
Donna and Jerry Slipakoff
Janeane Sloane
Judith Taylor
Constance and Sankey Williams
Lisa and Lars Williamson
Pam and Don Yih
Susan and David Zelouf

COLLECTOR

Melissa N. Anderson
Pat and David Atkinson
Stephanie Austin
Charna Axelrod
Elyse and Max Berger
Mr. and Mrs. John K. Binswanger
Ilene Blain
Charlotte Blankfield
Lisette Bralow
Sibby Brasler
Kay Braun
Ira Brind and Stacey Spector
Lloyd Brown
Gigi and Scott Bruce
Sandra Cadwalader
Elise W. Carr
Ellen Carver
Sara A. Cerato and Dennis Adams
Susan Charleston and Kenneth J. Davis
Kurt Christensen
Karen and Stewart Cohen
Candace H. Coleman
Mrs. Tristram C. Colket Jr.
Ronny and Bob Connor
Carole Cook
Cross Medical Group
Maude de Schauensee
Dashing Designs Inc., Marcy Dash Friedman
Mrs. J. Robert Derr, Jr.
Jaqueline Dickman
Helen W. Drutt-English
Barbara Eberlein and Jerry Wind
Bonnie and Jay Eisner
Margo Eremus
Henry C. Fader
Paula Fein
Anna Fichtner
Jaimie and David Field
Amy Finkel and Richard Braemer
Felice Fischer
Margaret and Peter Fleming
Linda G. Fuller
Clare Fullerton
Elizabeth H. Gemmill
Maxine Goldberg
Linda Golden
Barbara L. and Larry Gross
Barbara S. Gross
Jack Grossman
Mrs. Henry F. Harris
Jeanne Hollander
Janet Holloway
Cynthia Holstad
Sue and Steve Jacobs
Mrs. Joan M. Johnson
Carol W. Jones
Margaret Jones
Mary Kahn
Wendy and Ted Kapnek
Magen Kauffman

Debbie and Paul Kelly
Mr. and Mrs. Edward Kennedy
Susan and Leonard Klehr
Carol Klein and Lawrence Spitz
Julie Kronfeld
Mr. and Mrs. Stephen L. Kurtz
Anita and Peter Lockhart
Sueyun Locks
Mickey and Larry Magid
Joseph M. Manko, Sr.
Linda Matrunich and Patrick Grannan
Harvey S. Shipley Miller
Maida R. Milone
Joan R. Momjian
Linda and Laddie Montague
Sara Nerken
Danuta A. Nitecki
Marie O'Donnell and Bruce Satalof
Rose Parrotta
Jane G. Pepper
Laurie Phillips
Stephanie Resnick
Gilroy and Lillian P. Roberts Foundation
Eve Prensky Rob
Ryan Rosen
Fern Rotfeld
Michele and David Rubenstein
Katherine Sachs
Arden Saligman
Debbie Schaeffer
Karyn L. Scher
Rebecca Schulman
Randy Jill Schwartz
Andrea Seltzer
Irene McMenamin Shabel
Liz Shapiro
Lauren and Peter Sharkey
Susan Sherman
Genvieve Shields
Janet Wilson Smith
Mrs. John L. Steigerwalt
Lenée Stein
Keith R. Straw
Charlotte Suspenski
Michelle Tate
Barbara Tober
Debbie Feith Tye
Nancy W. Uffner
Helene Van Beuren
Susan Vitale
Donna Walker and Torben Jenk
Mr. and Mrs. William D. Walker
Beverly Wilde
Dilys Winegrad PhD
Lisa Witomski and James Scott
Diane and Richard Woosnam
Leslie Zahler

Due to printing deadline, list is incomplete.

Thank you to our Show Sponsors
for their generous support.



When you purchase a ticket to the Philadelphia Museum of Art Craft Show or become a sponsor of the Show, you are directly supporting the work of the Philadelphia Museum of Art.