

ART  
BY  
HAND



THE  
47TH  
ANNUAL  
PHILADELPHIA  
MUSEUM  
OF ART

CONTEMPORARY  
**CRAFT**  
**SHOW**

# Gifts to the Philadelphia Museum of Art

**When you purchase a ticket to the Philadelphia Museum of Art Craft Show or become a sponsor of the Show, you are directly supporting the work of the Philadelphia Museum of Art. Thanks to your support, the Craft Show has contributed **more than \$14.5 million over a 46-year period.****



The impact of the Craft Show can be seen throughout the museum with funds supporting a variety of items and programs and American Craft acquisitions.

Additional programs funded from the 2022 Show proceeds include the current special exhibition, ***The Shape of Time: Korean Art after 1989***, on view until February 11, 2024. This exhibition brings together works by 28 contemporary artists of Korean descent in a vibrant installation that filters individual artistic practice through the collective memory of a generation that lived under South Korea's authoritarian regime—and was the first to experience its new democratic freedoms. **Visit [www.philamuseum.org](http://www.philamuseum.org) for tickets and information.**

## Presented by the Craft Show Committee and The Women's Committee of the Philadelphia Museum of Art for the benefit of the Philadelphia Museum of Art.

**November 2, 2023**

Preview Party, 4:00 to 9:00 p.m.

**November 3, 2023**

Open to the public 11:00 a.m. to 7:00 p.m.

**November 4, 2023**

Open to the public 10:00 a.m. to 6:00 p.m.

**November 5, 2023**

Open to the public 10:00 a.m. to 5:00 p.m.



### Featured on the cover

**Sharon Church**

(American, 1948-2022)

***Pendant No. 2, 1990***

Jewelry

Philadelphia Museum of Art:

Gift of Jane Korman, 2009

## Dear Friends,

The Craft Show Committee continues to produce the largest annual fund-raising event for the Philadelphia Museum of Art. To date, the Show has raised more than \$14.5 million for the Museum. These funds provide financial support for educational programs, special exhibitions, equipment, the acquisition of art and craft for the permanent collection, and various other programs and projects.

Our deepest gratitude is extended to our show sponsors for their remarkable generosity: Goldman Sachs, Maguire Foundation, Jane & Leonard Korman Family Foundation, Mill Creek, Parkway, Morgan Stanley Wealth Management, Philadelphia Hand to Shoulder Center, Corient, The Frank Financial Consulting Group, Osage, The McCausland Foundation and Stradley Ronon

Please join us in welcoming 195 of the best artists from across the country.

Our deepest appreciation goes to the Craft Show Committee; a group of one hundred dedicated women who spend thousands of volunteer hours to plan and produce the Show. Thanks also to the Women's Committee and the Museum staff for their efforts on behalf of the Show. We are grateful to our Preview Party Patrons for your generous support of the Preview Party. Your loyalty ensures the success of the Show.

Finally, special recognition is extended to our show manager, Nancy O'Meara. Over the past 30+ years, she has helped develop the Show into an exceptional event. We are grateful for her notable expertise, remarkable talent, and diplomatic skills.

Enjoy the 2023 Philadelphia Museum of Art Contemporary Craft Show!

**Ami Lonner**

*Chair, 2023 Craft Show*

**Marta Adelson**

*President, The Women's Committee*

# About the cover

**S**haron Church McNabb, of Philadelphia, was an award-winning professor emerita at the University of the Arts and internationally renowned metalsmith and studio jeweler.

Known professionally as Sharon Church, she was recognized around the world as a preeminent studio jeweler, and her one-of-a-kind creations feature, in her own words, “shimmering beauty along with its dark, damp and mysterious underpinnings.”

Referencing growth, renewal, and loss in her work, Church carved forms inspired by nature, drawn from her own garden and from a nearby arboretum in Philadelphia. “Walks led me to closely observe the nuts, pods, and seeds found in abundance in the woods and in my backyard. In **Pendant No. 2** I was inspired by these forms and used them as models for weighted jewelry elements that would swing and sway in intimate response to the body’s movement.”

Church considered **Pendant No. 2** to be a turning point in her work. It was made for a private commission that provided the artist with the freedom to fully express herself.



**Sharon Church**  
(American, 1948–2022)  
**Pendant No. 2**



# Directory of Exhibitors

## Matthew Addonizio

Philadelphia, PA  
(773)-787-3889  
[www.matthew-addonizio.com](http://www.matthew-addonizio.com)  
724 Fiber Wearable



## Larry Allen

Leeds, AL  
(205) 515-5727  
[www.larryallenpottery.com](http://www.larryallenpottery.com)  
727 Ceramics



## Debra Adelson

Collingswood, NJ  
(413)-687-5126  
[www.debraadelsonjewelry.com](http://www.debraadelsonjewelry.com)  
133 Jewelry



## Laura Baring-Gould Studios

Somerville, MA  
(617) 947-9580  
[www.baringgouldbronzeworks.com](http://www.baringgouldbronzeworks.com)  
225 Metal



## Elyse Allen

Santa Fe, NM  
(917) 626-5617  
[www.elyseallentextiles.com](http://www.elyseallentextiles.com)  
508 Fiber Wearable



## Francisco & Laura Bautista

Sandy, OR  
(971)-235-1290  
[www.bautistaweaving.com](http://www.bautistaweaving.com)  
614 Fiber Decorative



## Directory of Exhibitors

### Tamara Belinda

Brooklyn, NY  
(917) 426-3902  
[www.crowninspired.com](http://www.crowninspired.com)  
227 Paper



### Christina Boy

Madison, VA  
(540) 718-7777  
[www.christinaboydesign.com](http://www.christinaboydesign.com)  
515 Furniture



### Annie Bisone

Milwaukee, WI  
(414) 426-9607  
[www.laloworkshop.com](http://www.laloworkshop.com)  
147 Fiber Wearable



### Ann Brauer

Shelburne Falls, MA  
(413) 834-3576  
[www.annbrauer.com](http://www.annbrauer.com)  
721 Fiber Decorative



### Anna Boothe/Pate de Verity

Zieglerville, PA  
(610) 715-8732  
[www.patedeverity.com](http://www.patedeverity.com)  
204 Glass



### Ashley Buchanan

Marietta, GA  
(770) 639-7256  
[www.ashleybuchananjewelry.com](http://www.ashleybuchananjewelry.com)  
210 Jewelry



# Directory of Exhibitors

## Laura Burkett

Pawtucket, RI  
(617) 708-6404  
[www.lauraburketttdesigns.com](http://www.lauraburketttdesigns.com)  
103 Leather



## Karen & Geoffrey Caldwell

Stockton, NJ  
(908) 892-3995  
[www.sunflowerglassstudio.com](http://www.sunflowerglassstudio.com)  
414 Glass



## Sandra Byers

Rock Springs, WI  
(608) 522-5648  
[www.thebyersstudio.com](http://www.thebyersstudio.com)  
116 Ceramics



## Kimmy Cantrell

College Park, GA  
(404) 556-0190  
[www.kimart.com](http://www.kimart.com)  
208 Ceramics



## Winthrop Byers

Rock Springs, WI  
(608) 522-5648  
[www.thebyersstudio.com](http://www.thebyersstudio.com)  
119 Ceramics



## Patrick Carrow

Philadelphia, PA  
(215) 219-7884  
[www.patrickmichaelaccessories.com](http://www.patrickmichaelaccessories.com)  
415 Fiber Wearable





## Directory of Exhibitors

### Theresa Carson

Baltimore, MD  
(410) 558-3987  
[www.theresacarson.com](http://www.theresacarson.com)  
310 Jewelry



### Fred Chase

Collingswood, NJ  
(609) 364-0625  
[www.fredchasewoodcraft.com](http://www.fredchasewoodcraft.com)  
145 Wood



### Evan Chambers

Pasadena, CA  
(805) 215-9269  
[www.evanchambersobjects.com](http://www.evanchambersobjects.com)  
619 Furniture



### Sarah Grace Cheek

Earlsville, VA  
(757) 817-9060  
[www.sarahgracecheek.com](http://www.sarahgracecheek.com)  
135 Emerging Artist - Wood



### Teresa Chang Ceramics

Philadelphia, PA  
(267) 255-6209  
[www.teresachang.com](http://www.teresachang.com)  
602 Ceramics



### Dwo Wen Chen

Providence, RI  
(401) 451-2350  
[www.threewheelstudio.com](http://www.threewheelstudio.com)  
416 Ceramics



# Directory of Exhibitors

## Ashley Chiang

Kensington, MD  
(678) 662-4639  
[www.paperliberated.com](http://www.paperliberated.com)  
106 Paper



## Ann Marie Cianciolo

Milwaukee, WI  
(414) 336-6100  
[www.annsjewelry.com](http://www.annsjewelry.com)  
304 Jewelry



## Namu Cho

Bethesda, MD  
(301) 404-6789  
[www.studionamu.com](http://www.studionamu.com)  
736 Jewelry



## Petra Class Studio

New York, NY  
(415) 234-0501  
[www.petraclassjewelry.com](http://www.petraclassjewelry.com)  
701 Jewelry



## Hyungzee Choi

Raleigh, NC  
(917) 478-0888  
[www.hyungzeechoi.com](http://www.hyungzeechoi.com)  
108 Jewelry



## Kevin Costello

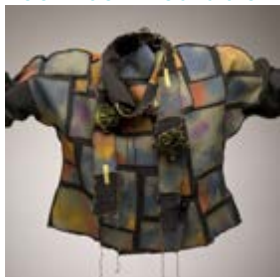
Saint Paul, MN  
(248) 670-0691  
[www.slicefurniture.com](http://www.slicefurniture.com)  
511 Furniture



## Directory of Exhibitors

### Deborah Cross & Gordon Heinel

Santa Cruz, CA  
(831) 345-0262  
[www.deborahcross.com](http://www.deborahcross.com)  
700 Fiber Wearable



### Kate Dannenberg

Philadelphia, PA  
(215) 510 7231  
[www.katedannenberg.com](http://www.katedannenberg.com)  
623 Jewelry and Metal



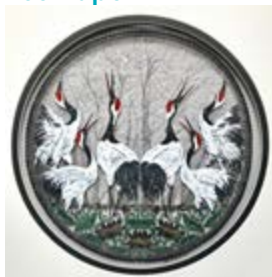
### Lisa & Scott Cylinder

Brunswick, ME  
(610) 780-2331  
[www.lisaandscottcylinder.com](http://www.lisaandscottcylinder.com)  
612 Jewelry and Mixed Media



### Jupi Das

Blue Bell, PA  
(215) 237-1749  
[www.facebook.com/Jupisart](http://www.facebook.com/Jupisart)  
603 Paper



### Alan Daigre

Woodbury, TN  
(615) 713-7868  
[www.alandaigredesigns.com](http://www.alandaigredesigns.com)  
100 Furniture



### Janine DeCresenzo

Philadelphia, PA  
(646) 243-8171  
[www.janinedecresenzojewelry.com](http://www.janinedecresenzojewelry.com)  
725 Jewelry



# Directory of Exhibitors

## Shaya Durbin

Seattle, WA

(510) 225-5169

[www.shayadurbin.com](http://www.shayadurbin.com)

223 Jewelry



## Nicholas Everett

Eagle, CO

(970) 930-2259

[www.everettstudio.co](http://www.everettstudio.co)

300 Ceramics



## Lisa B. Evans Ceramics

Brunswick, ME

(207) 409-6293

[www.lisabevans.com](http://www.lisabevans.com)

505 Ceramics



## Deborah Falls

Belfast, ME

(802) 356-4116

[www.deborahfalls.com](http://www.deborahfalls.com)

403 Fiber Decorative



## Ann Everett

Chicago, IL

(630) 461-9419

[www.anneverettfashiondesigns.com](http://www.anneverettfashiondesigns.com)

207 Fiber Wearable



## Robert Farrell

Fort Atkinson, WI

[www.farrellsilver.com](http://www.farrellsilver.com)

405 Metal



## Directory of Exhibitors

### Celia Feldberg

Philadelphia, PA  
(978) 760-1498  
[www.celiafeldberg.com](http://www.celiafeldberg.com)  
105 Emerging Artist- Ceramics



### Pat Flynn

High Falls, NY  
(845) 687-4020  
[www.patflynninc.com](http://www.patflynninc.com)  
218 Jewelry



### Sandy Fisher

Chico, CA  
(530) 345-4373  
[www.sandyfisherwoven.com](http://www.sandyfisherwoven.com)  
524 Fiber Wearable



### Nathaniel Fry

Newtown, PA  
(717) 606-5928  
[www.natfrywoodworking.com](http://www.natfrywoodworking.com)  
715 Furniture



### Genevieve Flynn

Kansas City, MO  
(816) 333-6719  
[www.genevieveflynn.com](http://www.genevieveflynn.com)  
730 Metal



### Jarrod Futscher

Charleroi, PA  
(502) 316-4528  
[www.taktimedesign.com](http://www.taktimedesign.com)  
404 Glass





# Directory of Exhibitors

## Pong Gaddi

Buffalo, NY  
(716) 863-2217  
[www.pgaddi.com](http://www.pgaddi.com)  
713 Leather



## Galen Gibson-Cornell

Philadelphia, PA  
(660) 853-1209  
[www.galengibsoncornell.com](http://www.galengibsoncornell.com)  
400 Paper



## Phil Gautreau Wood Design

Brooklyn, NY  
(347) 461-1744  
[www.philgautreau.net](http://www.philgautreau.net)  
605 Wood



## Geoffrey Giles

Asheville, NC  
(828) 280-4389  
[www.geoffreydgiles.com](http://www.geoffreydgiles.com)  
520 Jewelry



## Alexandra Geller Ceramics

Easthampton, MA  
(781) 775-6090  
[www.alexandrageller.com](http://www.alexandrageller.com)  
621 Ceramics



## Amy Gillespie

Orleans, MA  
(617) 359-9973  
[www.amygillespiestudio.com](http://www.amygillespiestudio.com)  
706 Fiber Decorative



## Directory of Exhibitors

### Anastassia Gonye - Tuff Kookooshka Studio

Buxton, ME  
(508) 548-9933  
[www.kookooshka.com](http://www.kookooshka.com)  
104 Fiber Wearable



### Ryan Greenheck

Spring City, PA  
(607) 382-5326  
[www.ryanjgreenheck.com](http://www.ryanjgreenheck.com)  
732 Ceramics



### Danielle Gori-Montanelli

Middlebury, VT  
(802) 771-5489  
[www.studiodgm.com](http://www.studiodgm.com)  
608 Jewelry



### Shirley Gromen

Ridge, MD  
(703) 328-3597  
[www.shirleygromenceramics.com](http://www.shirleygromenceramics.com)  
221 Ceramics



### Isabelle Gougenheim Design

Chicago, IL  
(312) 953 9097  
[www.isabellegougenheimdesigns.com](http://www.isabellegougenheimdesigns.com)  
216 Fiber Wearable



### Xinia Guan

Savannah, GA  
(912) 318-4799  
[www.xiniaguan.com](http://www.xiniaguan.com)  
313 Jewelry



# Directory of Exhibitors

## Nicole Haddad, Lobo Mau

Philadelphia, PA

(610) 764-9035

[www.lobomau.com](http://www.lobomau.com)

213 Fiber Wearable



## Andrea Geer Handy

Rochester, NY

(585) 739-7465

[www.andreageerdesigns.com](http://www.andreageerdesigns.com)

402 Fiber Wearable



## Starr Hagenbring

New Orleans, LA

(415) 902-9305

[www.artandeyesneworleansla.com](http://www.artandeyesneworleansla.com)

408 Fiber Wearable



## Thomas Harris

Bloomington, IN

(812) 345-4304

[www.clayoh.com](http://www.clayoh.com)

606 Ceramics



## Melissa Hampton

Saint Louis, MO

(636) 232-3733

[www.ascendantjewelry.com](http://www.ascendantjewelry.com)

705 Jewelry



## Barbara Heinrich

Pittsford, NY

(585) 383-1089

[www.barbaraheinrichstudio.com](http://www.barbaraheinrichstudio.com)

143 Jewelry



## Directory of Exhibitors

### Jill Heir

Reinholds, PA  
(847) 682-8277  
[www.intertwinedoriginalart.com](http://www.intertwinedoriginalart.com)  
622 Basketry



### Charlotte Hess

Nantucket, MA  
(215) 713-4180  
[www.isobelandcleo.com](http://www.isobelandcleo.com)  
600 Fiber Wearable



### Derek Hennigar

Columbus, NC  
(828) 301-3822  
[www.ordinaryfurniture.com](http://www.ordinaryfurniture.com)  
510 Furniture



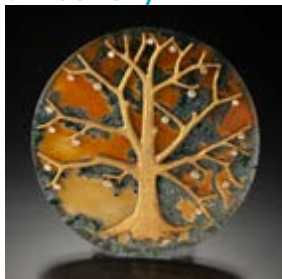
### Susan Hoge

Rochester Hills, MI  
(248) 342-5117  
[www.susanhoge.com](http://www.susanhoge.com)  
411 Jewelry



### Thomas Herman, Seven Fingers Inc

Stone Ridge, NY  
(845) 853-6643  
[www.sevenfingers.com](http://www.sevenfingers.com)  
519 Jewelry



### Elizabeth Holliday

Memphis, TN  
(901) 485-1358  
[www.denovocoats.com](http://www.denovocoats.com)  
126 Fiber Wearable



# Directory of Exhibitors

## Scott Hronich

Malta, NY  
(805) 509-4497  
[www.internalfireglass.com](http://www.internalfireglass.com)  
620 Glass



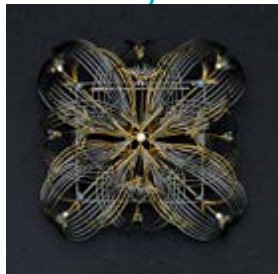
## Takashi Ichihara

Granby, MA  
(413) 467-3362  
[www.tiichiharaceramics.com](http://www.tiichiharaceramics.com)  
517 Ceramics



## Sophia Hu

Las Vegas, NV  
(214) 893-0147  
[www.6shadows.net](http://www.6shadows.net)  
205 Jewelry



## Reiko Ishiyama

New York, NY  
(646) 623-9771  
[www.reikoishiyama.com](http://www.reikoishiyama.com)  
407 Jewelry



## Angela Humes

Philadelphia, PA  
[@humesceramics](https://www.instagram.com/humesceramics) (Instagram)  
215 Ceramics



## Mary Jaeger

Brooklyn, NY  
(929) 337-6639  
[www.maryjaeger.com](http://www.maryjaeger.com)  
141 Fiber Wearable





## Directory of Exhibitors

### Bashar & Roula Jarjour

Shippensburg, PA

(717) 387-9530

[www.jarjourpottery.com](http://www.jarjourpottery.com)

513 Ceramics



### Devin Johnson

Northfield, MN

(952) 270-8284

[www.makeshiftaccessories.com](http://www.makeshiftaccessories.com)

325 Jewelry



### Christopher Jeffries

Laguna Beach, CA

(949) 228-7898

[www.jeffriesglass.com](http://www.jeffriesglass.com)

200 Glass



### Ray Jones

Asheville, NC

(828) 298-6007

[www.rayjoneswoodboxes.com](http://www.rayjoneswoodboxes.com)

420 Wood



### Soojin Jeong

Marriottsville, MD

(646) 706-1321

[www.banjiwork.com](http://www.banjiwork.com)

124 Jewelry



### Ryan Jones

Raleigh, NC

(502) 409-3504

[www.rootsandjones.com](http://www.rootsandjones.com)

226 Mixed Media



# Directory of Exhibitors

## Catherine Joseph

Huntington, NY  
(631) 385-4517  
[www.cjosephny.com](http://www.cjosephny.com)  
312 Fiber Wearable



## Fred Kaemmer

Saint Paul, MN  
(651) 261-8983  
[www.fredsglass.com](http://www.fredsglass.com)  
229 Glass



## Audrey Jung

San Francisco, CA  
(415) 317-1675  
[www.audreymodern.com](http://www.audreymodern.com)  
303 Fiber Wearable



## Harold Kalmus

Arden, DE  
(302) 529-1516  
[www.kalmusknives.com](http://www.kalmusknives.com)  
707 Mixed Media



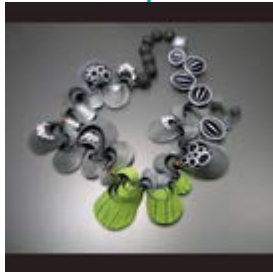
## Michael & Amanda Jury

Springfield, VA  
(703) 598-7504  
[www.mjurywoodworks.com](http://www.mjurywoodworks.com)  
719 Furniture



## Wiwat Kamolpornwijit

Alexandria, VA  
(703) 340-6690  
[www.wiwat-kamolpornwijit.com](http://www.wiwat-kamolpornwijit.com)  
412 Jewelry



## Directory of Exhibitors

### Dahlia Kanner

Kingston, RI  
(301) 706-3014  
[www.dahliakannerstudio.com](http://www.dahliakannerstudio.com)  
421 Jewelry



### Judith Kaufman

West Hartford, CT  
(860) 214-1881  
[www.judithkaufman.com](http://www.judithkaufman.com)  
509 Jewelry



### Ani Kasten

Shafer, MN  
(240) 460-3008  
[www.anikasten.com](http://www.anikasten.com)  
311 Ceramics



### Nicholas Kekic

Bellows Falls, VT  
(802) 875-1825  
[www.kekicglass.com](http://www.kekicglass.com)  
309 Glass



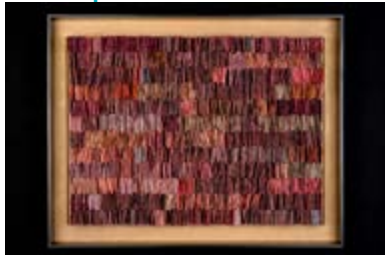
### Lori Katz

Alexandria, VA  
(703) 475-1640  
[www.lorikatz.com](http://www.lorikatz.com)  
115 Ceramics



### Ellen Kennedy

Bethesda, MD  
(301) 573-6593  
[www.ellenmearskennedy.com](http://www.ellenmearskennedy.com)  
502 Paper



# Directory of Exhibitors

## Ann Klem

Fisherville, KY  
(502) 817-8635  
[www.annklem.com](http://www.annklem.com)  
710 Glass



## Andy Koupal

Dearborn, MI  
(248) 767-6613  
[www.andykoupal.com](http://www.andykoupal.com)  
315 Glass



## John Knapp

Cold Spring, NY  
(917) 757-8550  
[www.i-made-this-thing.com](http://www.i-made-this-thing.com)  
129 Emerging Artist - Furniture



## Loretta Lam

Carmel, NY  
(845) 225-1451  
[www.lorettalam.com](http://www.lorettalam.com)  
125 Jewelry



## Patricia Kochaver

Skokie, IL  
(847) 722-8741  
[www.pattykochaver.com](http://www.pattykochaver.com)  
720 Ceramics



## R.A. Laufer

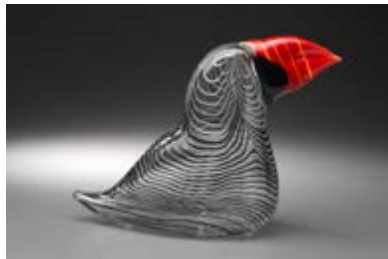
Bentley Springs, MD  
(410) 847-4267  
[www.blackwaterwoodworks.com](http://www.blackwaterwoodworks.com)  
526 Furniture



## Directory of Exhibitors

### Aron Leaman

Lowell, MA  
(978) 317-4756  
[www.aronleamanglass.com](http://www.aronleamanglass.com)  
613 Glass



### Sergey Levchin

Brooklyn, NY  
(917) 714-9610  
[www.seekingwaxwing.com](http://www.seekingwaxwing.com)  
127 Emerging Artist - Furniture



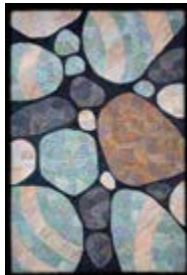
### Jeong Ju Lee

Rochester, NY  
(585) 503-4416  
[www.jeongjulee.com](http://www.jeongjulee.com)  
722 Jewelry



### Meg Little

Newport, RI  
(401) 662-0283  
[www.meglittle.com](http://www.meglittle.com)  
406 Fiber Decorative



### Kate Leibrand

Philadelphia, PA  
(856) 220-6247  
[www.kateleibrand.com](http://www.kateleibrand.com)  
409 Fiber Decorative



### Roy Livingston

Louisville, KY  
(502) 836-4035  
[www.roixdesign.com](http://www.roixdesign.com)  
617 Furniture





# Directory of Exhibitors

## Tara Locklear

Knightdale, NC  
(252) 414-3366  
[www.taralocklear.com](http://www.taralocklear.com)  
604 Jewelry



## Amy Roper Lyons

Summit, NJ  
(908) 468-8124  
[www.amyroperlyons.com](http://www.amyroperlyons.com)  
209 Mixed Media



## Kari Lonning

Ridgefield, CT  
(203) 431-0617  
[www.karibaskets.com](http://www.karibaskets.com)  
128 Basketry



## Katie MacDonald

Plymouth, MI  
(608) 385-0019  
[www.katiemacdonald.com](http://www.katiemacdonald.com)  
625 Furniture



## Jorgelina Lopez & Marco Duenas

Baltimore, MD  
(443) 527-0715  
[www.laloupedesign.com](http://www.laloupedesign.com)  
203 Furniture



## Tyler MacDonald

Naples, FL  
(239) 537-5921  
[www.tylermac.com](http://www.tylermac.com)  
718 Mixed Media



## Directory of Exhibitors

### Colin Maher-Velasquez

Philadelphia, PA  
(215) 687-5079  
[www.luisavelasquez.com](http://www.luisavelasquez.com)  
516 Mixed Media



### John Mascoll

Safety Harbor, FL  
(727) 709-0299  
[www.johnmascoll.com](http://www.johnmascoll.com)  
712 Wood



### Lauren Markley

Raleigh, NC  
(609) 240-7015  
[www.laurenmarkleyjewelry.com](http://www.laurenmarkleyjewelry.com)  
224 Jewelry



### Ayesha Mayadas

Southfield, MA  
(585) 755-9866  
[www.ayeshastudio.com](http://www.ayeshastudio.com)  
506 Jewelry



### Nick and Kristen Martier

Yardley, PA  
(215) 932-7046  
[www.nickmartierwoodworker.com](http://www.nickmartierwoodworker.com)  
624 Furniture



### Jennifer McCurdy

Vineyard Haven, MA  
(508) 627-0443  
[www.jennifermccurdy.com](http://www.jennifermccurdy.com)  
306 Ceramics



# Directory of Exhibitors

## Astou Dioum McFadden

New York, NY  
(646) 382-8882  
[www.toubabasket.com](http://www.toubabasket.com)  
609 Basketry



## Summer Merritt, Pride & Archive

Weaverville, NC  
(562) 972-2962  
[www.prideandarchivejewelry.com](http://www.prideandarchivejewelry.com)  
139 Emerging Artist - Jewelry



## Molly McLaughlin

Amherst, MA  
(207) 415-6835  
[www.threadinggossamer.com](http://www.threadinggossamer.com)  
214 Fiber Decorative



## Graham Michael

Philadelphia, PA  
(717) 440-5070  
[www.minervaenterprises.us](http://www.minervaenterprises.us)  
121 Emerging Artist - Furniture



## Alice McLean

Johnsburg, IL  
(815) 354-4897  
[www.mcleanbronze.com](http://www.mcleanbronze.com)  
113 Metal



## Steve Miller

Black Mountain, NC  
(305) 510-8910  
[www.naturesturnwoodturnings.com](http://www.naturesturnwoodturnings.com)  
323 Wood



## Directory of Exhibitors

### Holly Anne Mitchell

Indianapolis, IN  
(317) 209-6158  
[www.newspaperjewelry.com](http://www.newspaperjewelry.com)  
616 Jewelry



### Rebecca Myers

Baltimore, MD  
(610) 704-7670  
[www.rebeccamyersdesign.com](http://www.rebeccamyersdesign.com)  
211 Jewelry



### Victoria Moore

Bellefonte, PA  
(585) 802-0889  
[www.victoriamoore.net](http://www.victoriamoore.net)  
418 Metal



### Aprille Nace

Hamburg, NY  
(716) 949-4372  
[www.aprillenace.com](http://www.aprillenace.com)  
206 Ceramics



### Karen Morris

Saint Paul, MN  
(612) 839-4857  
[www.kmhats.com](http://www.kmhats.com)  
410 Fiber Wearable



### Nanako (Miller)

New York, NY  
(646) 270-8222  
[www.nanakoclothes.com](http://www.nanakoclothes.com)  
101 Fiber Wearable



# Directory of Exhibitors

## Amy Nguyen

Boston, MA  
(917) 838-8215  
[www.amynguyentextiles.com](http://www.amynguyentextiles.com)  
504 Fiber Wearable



## Susan Otterson

Madison, WI  
(608) 770-0664  
[www.susanotterson.com](http://www.susanotterson.com)  
220 Fiber Wearable



## J. David Norton

Akron, OH  
(330) 867-8330  
[www.jdavidnorton.com](http://www.jdavidnorton.com)  
734 Glass



## Tiffany Ownbey

Rutherfordton, NC  
(828) 429-7629  
[www.tiffanyownbey.com](http://www.tiffanyownbey.com)  
302 Paper and Mixed Media



## Pavel Novak

Collingswood, NJ  
(413) 687-5127  
[www.pavelnovakglass.com](http://www.pavelnovakglass.com)  
419 Glass



## Jinbi Park

Brooklyn, NY  
(347) 886-1285  
[www.jinbidesign.com](http://www.jinbidesign.com)  
615 Jewelry





## Directory of Exhibitors

### Keunho Park

Philadelphia, PA  
(814) 777-3342  
[www.studiospong.com](http://www.studiospong.com)  
711 Furniture



### Carrie Pearce

Peoria, IL  
(309) 231-4378  
[www.carriepearce.com](http://www.carriepearce.com)  
110 Mixed Media



### Sang Joon Park

Highland Mills, NY  
(551) 795-1439  
[www.sangjoonpark.com](http://www.sangjoonpark.com)  
610 Ceramics



### James Pearce

Peoria, IL  
(309) 303-6885  
[www.pearcepearce.com](http://www.pearcepearce.com)  
109 Furniture



### Robert Patterson

Milton, GA  
[www.rpatterson.com](http://www.rpatterson.com)  
114 Wood



### Jane Pellicciotto

Portland, OR  
(503) 317-2019  
[www.janepellicciotto.com](http://www.janepellicciotto.com)  
726 Jewelry



# Directory of Exhibitors

## Ian Petrie

Philadelphia, PA  
(651) 472-1802  
[www.ianmpetrie.com](http://www.ianmpetrie.com)  
618 Ceramics



## Julie Powell

Bellvue, CO  
(720) 394-0956  
[www.juliepowelldesigns.com](http://www.juliepowelldesigns.com)  
117 Jewelry and Fiber Decorative



## Peter M. Petrochko

Oxford, CT  
(203) 906-9989  
[www.peterpetrochko.com](http://www.peterpetrochko.com)  
702 Wood



## Helen Prior

New Paltz, NY  
(917) 363-2944  
[www.helenprior.com](http://www.helenprior.com)  
522 Ceramics



## Courtney Pistilli

Philadelphia, PA  
(267) 455-1764  
[www.sidewalkceramics.com](http://www.sidewalkceramics.com)  
137 Emerging Artist - Ceramics



## Baiyang Qiu

Palo Alto, CA  
(650) 224-2791  
[www.baiyangjewelry.com](http://www.baiyangjewelry.com)  
717 Jewelry



## Directory of Exhibitors

### Heasoon A. Rhee

Arlington, VA  
(858) 722-6910  
[www.bettlehouse.com](http://www.bettlehouse.com)  
316 Fiber Decorative



### Melinda Risk

West Lafayette, IN  
(765) 418-8457  
[www.melindariskjewelry.com](http://www.melindariskjewelry.com)  
112 Jewelry



### Mea Rhee

Silver Spring, MD  
(301) 495-3793  
[www.goodelephant.com](http://www.goodelephant.com)  
518 Ceramics



### Philip Roberts

Southampton, NJ  
(609) 200-0079  
[www.philip-roberts.com](http://www.philip-roberts.com)  
514 Wood



### Meghan Patrice Riley Studio

Brooklyn, NY  
(510) 717-1233  
[www.meghanpatriceriley.com](http://www.meghanpatriceriley.com)  
319 Jewelry



### David Roswell

Durham, NC  
(410) 952-2258  
[www.davidroswell.com](http://www.davidroswell.com)  
703 Ceramics



# Directory of Exhibitors

## Jacqueline Sanchez

Portland, OR  
(404) 441-5225  
[www.jacquelinesanchez.com](http://www.jacquelinesanchez.com)  
102 Jewelry



## Kim Schalk

Alexandria, VA  
(703) 622-8176  
[www.kimschalk.com](http://www.kimschalk.com)  
307 Fiber Wearable



## Paz Sandoval

Philadelphia, PA  
(215) 870-7142  
[www.pazsandoval.com](http://www.pazsandoval.com)  
118 Wood



## Peter Schilling

Somerville, MA  
(617) 417-9225  
[www.takingformjade.com](http://www.takingformjade.com)  
714 Jewelry



## SCAD Jewelry Graduate Association

Savannah, GA  
(912) 525-8458  
[www.scad.edu](http://www.scad.edu)  
708 University Program

# SCAD

The University for Creative Careers

## Melissa Schmidt

St. Louis, MO  
(314) 616-2092  
[www.melissaschmidtstudio.com](http://www.melissaschmidtstudio.com)  
512 Jewelry



## Directory of Exhibitors

### Christine Schukow

Ellenville, NY  
(845) 649-8904  
[www.christineoriginalsart.com](http://www.christineoriginalsart.com)  
305 Mixed Media



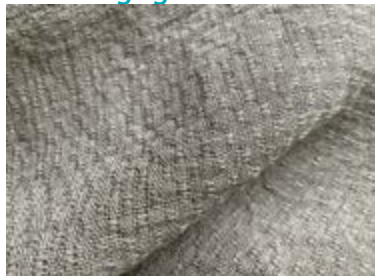
### Linda Senechal- Studio Tessere

Dorchester, MA  
(617) 312-0771  
[www.studiotessere.com](http://www.studiotessere.com)  
729 Fiber Wearable



### Clara Schulte

Winchester, VA  
(828) 273-7454  
[www.clscloth.com](http://www.clscloth.com)  
105 Emerging Artist - Fiber Decorative



### Eric Serritella

Chapel Hill, NC  
(919) 590-5708  
[www.ericsserritella.com](http://www.ericsserritella.com)  
728 Glass



### Biba Schutz

New York, NY  
(212) 947-3903  
[www.bibaschutz.com](http://www.bibaschutz.com)  
621 Jewelry



### Paula Shalan

West Stockbridge, MA  
(413) 358-1843  
[www.paulashalan.com](http://www.paulashalan.com)  
627 Ceramics



# Directory of Exhibitors

## Petty Shepard & Mary Otieno

Kingsport, TN  
(423) 292-0047  
317 Basketry



## Jonathan Simons

Kempton, PA  
(610) 756-6464  
www.woodspoon.com  
111 Wood



## Rachel Sherman

Huntingdon Valley, PA  
(215) 200-2092  
www.malaguetahandmade.com  
607 Fiber Wearable



## Julie Clendenen Simpson

Olympia, WA  
(360) 393-0303  
www.juliesimpsonart.com  
611 Fiber Wearable



## Eric Silva

Whittier, CA  
(562) 441-3788  
www.ericssilva.com  
417 Jewelry



## Paz Sintes – Textile Jewelry

New York  
Contact@pazsintes.com  
www.pazsintes.com  
217 Jewelry





# Directory of Exhibitors

## Carson Sio

Philadelphia, PA  
(315) 406-5552  
[www.siometalworks.com](http://www.siometalworks.com)  
413 Metal



## Randi Solin

Brattleboro, VT  
(802) 579-6509  
[www.solinglass.com](http://www.solinglass.com)  
219 Glass



## Bradford Smith

Lansdale, PA  
(267) 664-2220  
[www.bradfordwoodworking.com](http://www.bradfordwoodworking.com)  
503 Furniture



## Thomas Spake

Jasper, TN  
(423) 596-8696  
[www.thomasspakestudios.com](http://www.thomasspakestudios.com)  
314 Glass



## Jen Smith

Ashfield, MA  
(413) 522-0038  
[www.jensmith.com](http://www.jensmith.com)  
120 Jewelry



## Jonathan Stein

Cincinnati, OH  
(513) 476-5311  
[www.jonsteinpottery.com](http://www.jonsteinpottery.com)  
709 Ceramics



# Directory of Exhibitors

## Joy Stember

Abington, PA  
(215) 806-1668  
[www.joystember.com](http://www.joystember.com)  
212 Metal



## Kathleen Tesnakis

Troy, NY  
(518) 867-1864  
[www.ekologic.com](http://www.ekologic.com)  
122 Fiber Wearable



## Wendy Stevens

Boyertown, PA  
(610) 369-9265  
[www.wendystevens.com](http://www.wendystevens.com)  
131 Metal



## Sara Thompson

Vancouver, WA  
(508) 431-4972  
[www.sara-thompson-metalsmith.com](http://www.sara-thompson-metalsmith.com)  
222 Metal



## Eve Streicker

Norfolk, VA  
(401) 258-4892  
[www.originalave.com](http://www.originalave.com)  
626 Jewelry



## Toshiki & Maryszka

Lake Grove, NY  
(212) 475-8324  
[www.toshikiandmaryszka.com](http://www.toshikiandmaryszka.com)  
716 Leather



## Directory of Exhibitors

### Gary Traczyk

Palmetto Bay, FL

(305) 510-2319

[www.kineticsteel.com](http://www.kineticsteel.com)

202 Metal



### Shirley Weffer

Fort Lauderdale, FL

(954) 638-9836

[www.simplymila.com](http://www.simplymila.com)

308 Fiber Wearable



### Joshua Vogel

Highland, NY

(917) 797-1903

[www.johsua-vogel.com](http://www.johsua-vogel.com)

704 Mixed Media



### Jonathan White

Cape Elizabeth, ME

(207) 767-3835

[www.odding.com](http://www.odding.com)

107 Ceramics



### Stacey Lee Webber

Philadelphia, PA

(317) 363-7808

[www.staceyleewebber.com](http://www.staceyleewebber.com)

507 Metal



### Pamela Whitlock &

### Richard Davidson

Freedom, WY

(307) 883-6274

[www.sosumiweaving.com](http://www.sosumiweaving.com)

123 Fiber Wearable



# Directory of Exhibitors

## Yuliya Wolf

Hartford, WI

(262) 397-7258

[www.wolfleathers.com](http://www.wolfleathers.com)

500 Leather



## Liaung Chung Yen

Henrietta, NY

(646) 932-0801

[www.liaungchungyen.com](http://www.liaungchungyen.com)

723 Jewelry



## Stephen & Tamberlaine Zeh

Temple, ME

(207) 778-2351

[www.tamberlaine.com](http://www.tamberlaine.com)

318 Basketry and Jewelry



# Exhibitor by medium

## BASKETRY

- 609** Astou Dioum McFadden  
**622** Jill Heir  
**128** Kari Lonning  
**317** Petty Shepard & Mary Otieno  
**318** Stephen & Tamberlaine Zeh

## CERAMICS

- 727** Larry Allen  
**116** Sandra Byers  
**119** Winthrop Byers  
**208** Kimmy Cantrell  
**602** Teresa Chang  
**416** Dwo Wen Chen  
**505** Lisa B. Evans  
**300** Nicholas Everett  
**621** Alexandra Geller  
**732** Ryan Greenheck  
**221** Shirley Gromen  
**606** Thomas Harris  
**215** Angela Humes  
**517** Takashi Ichihara  
**513** Bashar & Roula Jarjour  
**311** Ani Kasten  
**115** Lori Katz  
**720** Patricia Kochaver  
**306** Jennifer McCurdy  
**206** Aprille Nace  
**610** Sang Joon Park  
**618** Ian Petrie  
**522** Helen Prior  
**518** Mea Rhee  
**703** David Roswell  
**627** Paula Shalan  
**709** Jonathan Stein  
**107** Jonathan White

## EMERGING ARTIST

- 135** Sarah Grace Cheek- Wood  
**105** Celia Feldberg- Ceramics  
**129** John Knapp- Furniture  
**127** Sergey Levchin- Furniture  
**139** Summer Merritt- Jewelry  
**121** Graham Michael- Furniture  
**137** Courtney Pistilli- Ceramics  
**105** Clara Schulte- Fiber Decorative

## FIBER DECORATIVE

- 614** Francisco & Laura Bautista  
**721** Ann Brauer  
**403** Deborah Falls  
**706** Amy Gillespie  
**409** Kate Leibrand  
**406** Meg Little  
**214** Molly McLaughlin  
**117** Julie Powell  
**316** Heasoon A. Rhee

## FIBER WEARABLE

- 724** Matthew Addonizio  
**508** Elyse Allen  
**147** Annie Bisone  
**415** Patrick Carrow  
**700** Deborah Cross & Gordon Heinel  
**207** Ann Everett  
**524** Sandy Fisher  
**104** Anastassia Gonye  
**216** Isabelle Gougenheim  
**213** Nicole Haddad & Jordan Haddad  
**408** Starr Hagenbring  
**402** Andrea Geer Handy  
**600** Charlotte Hess

**126** Elizabeth Holliday  
**141** Mary Jaeger  
**312** Catherine Joseph  
**303** Audrey Jung  
**410** Karen Morris  
**101** Nanako (Miller)  
**504** Amy Nguyen  
**220** Susan Otterson  
**307** Kim Schalk  
**729** Linda Senechal  
**607** Rachel Sherman  
**611** Julie Clendenen Simpson  
**122** Kathleen Tesnakis  
**308** Shirley Weffer  
**123** Pamela Whitlock &  
 Richard Davidson

#### **FURNITURE**

**515** Christina Boy  
**619** Evan Chambers  
**511** Kevin Costello  
**100** Alan Daigre  
**715** Nathaniel Fry  
**510** Derek Hennigar  
**719** Michael & Amanda Jury  
**526** R.A. Laufer  
**617** Roy Livingston  
**203** Jorgelina Lopez &  
 Marco Duenas  
**625** Katie MacDonald  
**624** Nick and Kristen Martier  
**711** Keunho Park  
**109** James Pearce  
**503** Bradford Smith

#### **GLASS**

**204** Anna Boothe  
**414** Karen & Geoffrey Caldwell  
**404** Jarrod Futscher  
**620** Scott Hronich  
**200** Christopher Jeffries  
**229** Fred Kaemmer  
**309** Nicholas Kekic  
**710** Ann Klem

**315** Andy Koupal  
**613** Aron Leaman  
**734** J. David Norton  
**419** Pavel Novak  
**728** Eric Serritella  
**219** Randi Solin  
**314** Thomas Spake

#### **JEWELRY**

**133** Debra Adelson  
**210** Ashley Buchanan  
**310** Theresa Carson  
**736** Namu Cho  
**108** Hyungzee Choi  
**304** Ann Marie Cianciolo  
**701** Petra Class &  
 Lucas Class-Knorr  
**612** Lisa & Scott Cylinder  
**623** Kate Dannenberg  
**725** Janine DeCresenzo  
**223** Shaya Durbin  
**218** Pat Flynn  
**520** Geoffrey Giles  
**608** Danielle Gori-Montanelli  
**313** Xinia Guan  
**705** Melissa Hampton  
**143** Barbara Heinrich  
**519** Thomas Herman  
**411** Susan Hoge  
**205** Sophia Hu  
**407** Reiko Ishiyama  
**124** Soojin Jeong  
**325** Devin Johnson  
**412** Wiwat Kamolpornwijit  
**421** Dahlia Kanner  
**509** Judith Kaufman  
**125** Loretta Lam  
**722** Jeong Ju Lee  
**604** Tara Locklear  
**224** Lauren Markley  
**506** Ayesha Mayadas  
**616** Holly Anne Mitchell  
**211** Rebecca Myers



**615** Jinbi Park  
**726** Jane Pellicciotto  
**117** Julie Powell  
**717** Baiyang Qiu  
**319** Meghan Patrice Riley  
**112** Melinda Risk  
**102** JacQueline Sanchez  
**714** Peter Schilling  
**512** Melissa Schmidt  
**321** Biba Schutz  
**417** Eric Silva  
**217** Paz Sintes  
**120** Jen Smith  
**626** Eve Streicker  
**723** Liaung Chung Yen  
**318** Stephen & Tamberlaine Zeh

**516** Colin Maher-Velasquez  
**302** Tiffany Ownbey  
**110** Carrie Pearce  
**305** Christine Schukow  
**704** Joshua Vogel

#### **PAPER**

**227** Tamara Belinda  
**106** Ashley Chiang  
**603** Jupi Das  
**400** Galen Gibson-Cornell  
**502** Ellen Kennedy  
**302** Tiffany Ownbey

#### **UNIVERSITY PROGRAM**

**708** SCAD

#### **LEATHER**

**103** Laura Burkett  
**713** Pong Gaddi  
**716** Toshiki & Maryszka  
**500** Yuliya Wolf

#### **METAL**

**225** Laura Baring-Gould  
**623** Kate Dannenberg  
**405** Robert Farrell  
**730** Genevieve Flynn  
**113** Alice McLean  
**418** Victoria Moore  
**413** Carson Sio  
**212** Joy Stember  
**131** Wendy Stevens  
**222** Sara Thompson  
**202** Gary Traczyk  
**507** Stacey Lee Webber

#### **WOOD**

**145** Fred Chase  
**605** Phil Gautreau  
**420** Ray Jones  
**712** John Mascoll  
**323** Steve Miller  
**114** Robert Patterson  
**702** Peter Petrochko  
**514** Philip Roberts  
**118** Paz Sandoval  
**111** Jonathan Simons

#### **MIXED MEDIA**

**612** Lisa & Scott Cylinder  
**226** Ryan Jones  
**707** Harold Kalmus  
**209** Amy Roper Lyons  
**718** Tyler MacDonald

# Exhibitor by booth number

100	Alan Daigre	139	Summer Merritt
101	Nanako Miller	141	Mary Jaeger
102	JacQueline Sanchez	143	Barbara Heinrich
103	Laura Burkett	145	Fred Chase
104	Anastassia Gonye	147	Annie Bisone
105	Celia Feldberg		
105	Clara Schulte	200	Christopher Jeffries
106	Ashley Chiang	202	Gary Traczyk
107	Jonathan White	203	Jorgelina Lopez & Marco Duenas
108	Hyungzee Choi		
109	James Pearce	204	Anna Boothe
110	Carrie Pearce	205	Sophia Hu
111	Jonathan Simons	206	Aprille Nace
112	Melinda Risk	207	Ann Everett
113	Alice McLean	208	Kimmy Cantrell
114	Robert Patterson	209	Amy Roper Lyons
115	Lori Katz	210	Ashley Buchanan
116	Sandra Byers	211	Rebecca Myers
117	Julie Powell	212	Joy Stember
118	Paz Sandoval	213	Nicole Haddad & Jordan Haddad
119	Winthrop Byers		
120	Jen Smith	214	Molly McLaughlin
121	Graham Michael	215	Angela Humes
122	Kathleen Tesnakis	216	Isabelle Gougenheim
123	Pamela Whitlock & Richard Davidson	217	Paz Sintes
		218	Pat Flynn
124	Soojin Jeong	219	Randi Solin
125	Loretta Lam	220	Susan K. Otterson
126	Elizabeth Holliday	221	Shirley Gromen
127	Sergey Levchin	222	Sara Thompson
128	Kari Lonning	223	Shaya Durbin
129	John Knapp	224	Lauren Markley
131	Wendy Stevens	225	Laura Baring-Gould
133	Debra Adelson	226	Ryan Jones
135	Sarah Grace Cheek	227	Tamara Belinda
137	Courtney Pistilli	229	Fred Kaemmer

<b>300</b>	Nicholas Everett	<b>418</b>	Victoria Moore
<b>302</b>	Tiffany Ownbey	<b>419</b>	Pavel Novak
<b>303</b>	Audrey Jung	<b>420</b>	Ray Jones
<b>304</b>	Ann Marie Cianciolo	<b>421</b>	Dahlia Kanner
<b>305</b>	Christine Schukow		
<b>306</b>	Jennifer McCurdy	<b>500</b>	Yuliya Wolf
<b>307</b>	Kim Schalk	<b>502</b>	Ellen Kennedy
<b>308</b>	Shirley Weffer	<b>503</b>	Bradford Smith
<b>309</b>	Nicholas Kekic	<b>504</b>	Amy Nguyen
<b>310</b>	Theresa Carson	<b>505</b>	Lisa B. Evans
<b>311</b>	Ani Kasten	<b>506</b>	Ayesha Mayadas
<b>312</b>	Catherine Joseph	<b>507</b>	Stacey Lee Webber
<b>313</b>	Xinia Guan	<b>508</b>	Elyse Allen
<b>314</b>	Thomas Spake	<b>509</b>	Judith Kaufman
<b>315</b>	Andy Koupal	<b>510</b>	Derek Hennigar
<b>316</b>	Heasoon A. Rhee	<b>511</b>	Kevin Costello
<b>317</b>	Petty Shepard & Mary Otieno	<b>512</b>	Melissa Schmidt
<b>318</b>	Stephen & Tamberlaine Zeh	<b>513</b>	Bashar & Roula Jarjour
<b>319</b>	Meghan Patrice Riley	<b>514</b>	Philip Roberts
<b>321</b>	Biba Schutz	<b>515</b>	Christina Boy
<b>323</b>	Steve Miller	<b>516</b>	Colin Maher-Velasquez
<b>325</b>	Devin Johnson	<b>517</b>	Takashi Ichihara
		<b>518</b>	Mea Rhee
		<b>519</b>	Thomas Herman
<b>400</b>	Galen Gibson-Cornell	<b>520</b>	Geoffrey Giles
<b>402</b>	Andrea Geer Handy	<b>522</b>	Helen Prior
<b>403</b>	Deborah Falls	<b>524</b>	Sandy Fisher
<b>404</b>	Jarrold Futscher	<b>526</b>	R.A. Laufer
<b>405</b>	Robert Farrell		
<b>406</b>	Meg Little	<b>600</b>	Charlotte Hess
<b>407</b>	Reiko Ishiyama	<b>602</b>	Teresa Chang
<b>408</b>	Starr Hagenbring	<b>603</b>	Jupi Das
<b>409</b>	Kate Leibrand	<b>604</b>	Tara Locklear
<b>410</b>	Karen Morris	<b>605</b>	Phil Gautreau
<b>411</b>	Susan Hoge	<b>606</b>	Thomas Harris
<b>412</b>	Wiwat Kamolpornwijit	<b>607</b>	Rachel Sherman
<b>413</b>	Carson Sio	<b>608</b>	Danielle Gori-Montanelli
<b>414</b>	Karen & Geoffrey Caldwell	<b>609</b>	Astou Dioum McFadden
<b>415</b>	Patrick Carrow	<b>610</b>	Sang Joon Park
<b>416</b>	Dwo Wen Chen	<b>611</b>	Julie Clendenen Simpson
<b>417</b>	Eric Silva	<b>612</b>	Lisa and Scott Cylinder

<b>613</b>	Aron Leaman	<b>723</b>	Liaung Chung Yen
<b>614</b>	Francisco & Laura Bautista	<b>724</b>	Matthew Addonizio
<b>615</b>	Jinbi Park	<b>725</b>	Janine DeCresenzo
<b>616</b>	Holly Anne Mitchell	<b>726</b>	Jane Pellicciotto
<b>617</b>	Roy Livingston	<b>727</b>	Larry Allen
<b>618</b>	Ian Petrie	<b>728</b>	Eric Serritella
<b>619</b>	Evan Chambers	<b>729</b>	Linda Senechal
<b>620</b>	Scott Hronich	<b>730</b>	Genevieve Flynn
<b>621</b>	Alexandra Geller	<b>732</b>	Ryan Greenheck
<b>622</b>	Jill Heir	<b>734</b>	J. David Norton
<b>623</b>	Kate Dannenberg	<b>736</b>	Namu Cho
<b>624</b>	Nick & Kristen Martier		
<b>625</b>	Katie MacDonald		
<b>626</b>	Eve Streicker		
<b>627</b>	Paula Shalan		
<b>700</b>	Deborah Cross & Gordon Heinel		
<b>701</b>	Petra Class & Lucas Class-Knorr		
<b>702</b>	Peter M. Petrochko		
<b>703</b>	David Roswell		
<b>704</b>	Joshua Vogel		
<b>705</b>	Melissa Hampton		
<b>706</b>	Amy Gillespie		
<b>707</b>	Harold Kalmus		
<b>708</b>	SCAD		
<b>709</b>	Jonathan Stein		
<b>710</b>	Ann Klem		
<b>711</b>	Keunho Park		
<b>712</b>	John Mascoll		
<b>713</b>	Pong Gaddi		
<b>714</b>	Peter Schilling		
<b>715</b>	Nathaniel Fry		
<b>716</b>	Toshiki & Maryszka		
<b>717</b>	Baiyang Qiu		
<b>718</b>	Tyler MacDonald		
<b>719</b>	Michael & Amanda Jury		
<b>720</b>	Patricia Kochaver		
<b>721</b>	Ann Brauer		
<b>722</b>	Jeong Ju Lee		

Goldman Sachs is  
proud to support the  
**2023 PHILADELPHIA  
MUSEUM OF ART  
CRAFTSHOW.**

---

Congratulations on  
another successful  
event.

**Goldman  
Sachs**

Congratulations  
to the Craft Show  
Committee on  
another fabulous  
show.







*is proud to support*

**THE 47TH ANNUAL  
PHILADELPHIA  
MUSEUM OF ART  
CONTEMPORARY  
CRAFT SHOW**

The Maguire Foundation is committed to improving the quality of life for people and educating the next generation of leaders. Founded by James J. and Frances M. Maguire and grounded in the teachings of St. Ignatius Loyola that we are men and women for others, the Maguire Foundation invests in education, arts and humanities, and the relief of hunger and homelessness.

*Proud supporter of*

THE  
47TH  
ANNUAL  
PHILADELPHIA  
MUSEUM  
OF ART

CONTEMPORARY  
**CRAFT  
SHOW**

THE  
**FRANK**

FINANCIAL CONSULTING GROUP

*of Wells Fargo Advisors*

**STEPHEN G. FRANK**

*Managing Director – Investment Officer*

Tel 610-940-2043 | 1-800-333-0202 | [stephen.frank@wfsadvisors.com](mailto:stephen.frank@wfsadvisors.com)

---

**DEREK R. BROOKS, CFP®**

*Senior Vice President - Investment Officer*

Tel 610-832-7655 | Cell 585-748-8915 | [derek.brooks@wfsadvisors.com](mailto:derek.brooks@wfsadvisors.com)

---

One Fayette Street | Two Tower Bridge, Suite 200 | Conshohocken, PA 19428

[fa.wellsfargoadvisors.com/frank-financial](http://fa.wellsfargoadvisors.com/frank-financial)



# PROUD TO SUPPORT

*the 47th Annual Philadelphia  
Museum of Art Craft Show.*





Stradley Ronon  
proudly supports  
The 47th Annual  
Philadelphia  
Museum of Art  
Contemporary  
Craft Show



[www.stradley.com/securities](http://www.stradley.com/securities)  
Pennsylvania | Washington, DC | New York  
New Jersey | Illinois | Delaware

STRADLEY  
RONON



Proud to support  
the 47th Annual  
Philadelphia  
Museum of Art  
Craft Show.

**MILL CREEK**

**Outsourced Chief Investment Officers  
Serving Families, Foundations, & Pensions**

---

[millcreekcap.com](http://millcreekcap.com)



PHILADELPHIA  
HAND TO SHOULDER  
CENTER

Experts in Comprehensive Care for  
Hands, Wrists, Elbows and Shoulders.

**610-768-5959**

---

**[Hand2ShoulderCenter.com](http://Hand2ShoulderCenter.com)**

**PROUD TO  
SUPPORT**

the 47th annual  
Philadelphia  
Museum of Art  
Craft Show.



Morgan Stanley



*Morgan Stanley is proud to support*

# Philadelphia Museum of Art Craft Show

The Richman Group  
at Morgan Stanley Private Wealth Management  
**Brian Bernhardt, Marc Richman**  
Private Wealth Advisor  
100 Front Street  
West Conshohocken, PA 19428  
+1 610 260-7571  
[therichmangroup@morganstanleypwm.com](mailto:therichmangroup@morganstanleypwm.com)  
<https://pwm.morganstanley.com/therichmangroup>

© 2021 Morgan Stanley Smith Barney LLC. Member SIPC. SUP001 CRC 3241699 03/21 CS 9959239 03/21

# Corient is Proud to Support the Philadelphia Museum of Art



**Justin Spike, CPA, CFP®**

Partner, Wealth Advisor

610.975.0314

[justin.spike@corient.com](mailto:justin.spike@corient.com)

Advisory services are offered through Corient Private Wealth LLC and its affiliates, each being a registered investment adviser ("RIA") regulated by the U.S. Securities and Exchange Commission ("SEC"). For a complete discussion of the scope of advisory services offered, fees, and other disclosures, please review the RIA's Disclosure Brochure (Form ADV Part 2A) and Form CRS, available upon request from the RIA and online at <https://adviserinfo.sec.gov/>.

[corient.com](https://corient.com)

**CORIENT**

**Proud to  
support**

the 47th Annual  
Philadelphia  
Museum of Art  
Craft Show.

THE  
MCCAUSLAND  
FOUNDATION

# OSAGE

---

## PARTNERS

*Proud supporter of the 47th Annual  
Philadelphia Museum of Art  
Craft Show!*

OSAGE  
VENTURE PARTNERS

Osage Venture Partners provides venture capital to early stage companies that focus on the future of work and the future of education.

OSAGE  
UNIVERSITY PARTNERS

Osage University Partners works with select high quality universities and research institutions to invest on their behalf in start-ups across all sectors and stages that are commercializing their technologies.

[www.osagepartners.com](http://www.osagepartners.com)

# CRAFT YOUR PMA EXPERIENCE



## Join the Associates and Chairman's Council

### Opening more doors thanks to your investment

Become a part of a community of philanthropic leaders dedicated to supporting the PMA. Make a difference and enjoy a behind-the-scenes experience full of sneak peeks, one-of-a-kind events, travel with curators, and more.

Enjoy even more access to art in the PMA collection by joining the **Curators' Circle**. Your participation adds three exclusive events each year to your membership at the Associates or Chairman's Council level.

To learn more or join, contact us at **215-684-7766**, [associates@philamuseum.org](mailto:associates@philamuseum.org), or [philamuseum.org/associates](http://philamuseum.org/associates).

Philadelphia  
Museum of  
**Art**



CONGRATULATIONS

**AMI LONNER**

2023 Show Chair

And to everyone on the 2023 Craft Show Committee and Women's Committee of the Philadelphia Museum of Art for assembling this amazing gathering of contemporary artists and their works.

---

We are proud and honored to support your work.

Co-Presidents, Stephen and Alan Cohn  
Principal, John Sion



Recognized by Barron's as one of  
the nation's top financial advisors\*

98% client and team member  
retention

\*For disclosure regarding ranking limitations, go to [sagefinancial.com](https://www.sagefinancial.com)

# FREEMAN'S

ALWAYS INVITING CONSIGNMENTS OF  
PENNSYLVANIA CRAFT AND DESIGN



**SOLD FOR \$239,400**

George Nakashima (1905-1990)

A Fine Single-Board Conoid Dining Table and a Set of Six Conoid Dining Chairs, 1988

## CONTACT

Michael Hartman

215.940.9826

[design@freemansauction.com](mailto:design@freemansauction.com)

[freemansauction.com](http://freemansauction.com)

2400 Market St Philadelphia PA





# The Partners at SD Associates PC are Proud to Support The 47th Annual Philadelphia Museum of Art Craft Show



Steven Caine, CPA, MST, Shareholder  
SD Associates, PC  
300 Yorktown Plaza Elkins Park, PA 19027  
215-517-5600 | [scaine@sdaccounting.com](mailto:scaine@sdaccounting.com)

We specialize  
in *you*



Proud to Support the Philadelphia Museum of Art  
Contemporary Craft Show

---

[MyRothmanStory.com](http://MyRothmanStory.com) | 833.308.2554



## The Connie Berg Team.

As a top Sales Team with Fox & Roach Realtors, who specialize in properties on the Main Line, Center City and northern suburbs. Connie Berg uses a combination of passion, wisdom and experience to help clients achieve their goals in a dynamic real estate market. The Connie Berg Team is here as a resource to you and your family.

*Contact us today!*

215.429.4024 -mobile / 215.887.0400 -office / [connieberg.com](http://connieberg.com)

**BERKSHIRE  
HATHAWAY**  
HOMESERVICES

FOX & ROACH,  
REALTORS®

# YOUR PMA, YOUR LEGACY



**Help shape the future of  
Philadelphia's art museum.**

## **Join the Fiske Kimball Society**

Legacy gifts, particularly those to the endowment, make a difference at PMA that lasts far beyond your lifetime. As the museum enters a new era, opening our doors to all Philadelphians, you will have a powerful effect on our future by including the museum in your estate plans.

Your planned gift will be recognized with membership in the Fiske Kimball Society. For more information, contact Tara Prakash at 215-684-7351 or [tara.prakash@philamuseum.org](mailto:tara.prakash@philamuseum.org).

Philadelphia  
Museum of  
**Art**

An abstract sculpture made of rusted metal, featuring large, irregular, circular and semi-circular openings. The surface is heavily textured with rust and painted in patches of blue, green, and yellow. The sculpture is set against a dark blue background.

# RAGO

## Masterworks

of Craft from Jane & Leonard

Korman

9 November 2023

333 Main St  
Lambertville NJ 08530  
609 397 9374  
[ragoarts.com](http://ragoarts.com)

Morgan Stanley



*Plotnick Forman Group at Morgan Stanley is proud to support*

## **Philadelphia Museum of Art Craft Show**

### **Philip Plotnick**

Senior Vice President  
Financial Advisor

### **Daniel Forman**

Corporate Retirement Director  
Senior Vice President  
Financial Advisor

100 Front Street  
West Conshohocken, PA 19428  
610-260-7516  
[philip.plotnick@morganstanley.com](mailto:philip.plotnick@morganstanley.com)  
[advisor.morganstanley.com/plotnick-forman-group](https://advisor.morganstanley.com/plotnick-forman-group)

© 2023 Morgan Stanley Smith Barney LLC. Member SIPC.  
SUP001 CRC5821758 07/23 CS 711289 06/23





ART  
BY  
HAND

See you here  
**next year!**

THE  
48TH  
ANNUAL  
PHILADELPHIA  
MUSEUM  
OF ART

CONTEMPORARY  
**CRAFT**  
**SHOW**

2024 APPLICATION PERIOD: DECEMBER 15, 2023 - APRIL 1, 2024

**November 15-17, 2024**

**Preview Party November 14**

Pennsylvania  
Convention  
Center

[pmacraftshow.org](https://pmacraftshow.org)





# CRAFT IN AMERICA

**NEW EPISODES PREMIERE DEC 29, 2023**

*(check local listings)*



CALDER KAMIN

**PLAY** celebrates the power of imagination and the child in all of us

Featuring: Roberto Benavidez, Schroeder Cherry, Cotsen Children's Library, Calder Kamin, Noah's Ark at the Skirball Cultural Center, and Lorena Robletto



LEANDRO GÓMEZ QUINTERO

**MINIATURES** explores the world of small objects and big ideas

Featuring: Gustave Baumann, Alexander Girard, Leandro Gómez Quintero, International Folk Art Market, and Mark Murphy

# THE PHILADELPHIA SHOW

---

ANTIQUES • ART • DESIGN

SAVE THE DATE

**April 26–28, 2024**

Preview Party April 25

[thephiladelphiashow.com](https://thephiladelphiashow.com)

 wayne art center

# CRAFTFORMS 2023

28th International Juried Exhibition of Contemporary Fine Craft

**December 2, 2023-January 20, 2024**



Featuring contemporary works  
in ceramics, wood, fiber,  
metal, glass and mixed media  
from around the world.

**PREVIEW PARTY & CRAFTFORMS AWARDS**  
**December 1 | 6-9 pm**



Also on view

## InGrained



**[craftforms.org](http://craftforms.org)**

413 Maplewood Avenue ■ Wayne, PA. 19087 ■ 610-688-3553



**CREATIVE + CONTENT**  
[routetwenty-nine.com](http://routetwenty-nine.com)

*Proud vendor of the Philadelphia Museum of Art  
Contemporary Craft Show since 2013.*





# GLG

## GRAVERS LANE GALLERY

Gravers Lane Gallery  
represents the  
spectrum of  
Contemporary Studio  
Craft nationally and  
internationally

Tuesday-Sunday 11-5  
[graverslanegallery.com](http://graverslanegallery.com)

8405 Germantown Ave  
Philadelphia, PA 19118  
(215) 247-1603



Sign up for our newsletter  
between NOW and November  
12th to be entered to win a  
\$150 GLG gift certificate



A GOLDENBERG  
GROUP CENTERPRISE

Come visit us for  
**brilliance**  
covetable gifts of the season  
November 24-January 12

Seth Michael Carlson  
*Envenomation*, sterling silver, garnets

## Digital Jurying & Application System for the Arts



[www.JuriedArtServices.com](http://www.JuriedArtServices.com)

[info@jurying.net](mailto:info@jurying.net)



## JEFF CITY BLOCK

EXPERT REAL ESTATE REPRESENTATION



**I am Honored to Sponsor the 47th Annual  
Philadelphia Museum of Art Contemporary Craft Show.**

**Jeff Block**  
Associate Broker, Esquire

[jeff@jeffcityblock.com](mailto:jeff@jeffcityblock.com)  
M 215.833.7088 | O 267.435.8015  
[cityblockteam.com](http://cityblockteam.com)

Jeff "City" Block is a real estate licensee affiliated with Compass RE. Compass RE is a licensed real estate broker and abides by equal housing opportunity laws. #eq

COMPASS RE



Joanne Davidow

## EXCELLENCE REDEFINED

*An Experienced, Perceptive & Caring Professional*

Joanne Davidow has been representing buyers and sellers of Philadelphia Center City real estate since 1978. Through her personal representation, her clients have transacted hundreds of millions of dollars of real estate.

Joanne Davidow, Luxury Collection Specialist, Vice President  
215-514-9532 cell | 215-546-0550 main office | joanne@joannedavidow.com  
JOANNEDAVIDOW.COM



At the Harper, Rittenhouse Square | 112 S 19th Street, Suite 200, Philadelphia, PA 19103

©2023 BHH Affiliates, LLC. An independently operated subsidiary of HomeServices of America, Inc., a Berkshire Hathaway affiliate, and a franchisee of BHH Affiliates, LLC. Berkshire Hathaway HomeServices and the Berkshire Hathaway HomeServices symbol are registered service marks of Columbia Insurance Company, a Berkshire Hathaway affiliate. Equal Housing Opportunity. Information not verified or guaranteed. If your home is currently listed with a Broker, this is not intended as a solicitation.



# Ellen Mears Kennedy

## *Art in Handmade Paper...*



...hundreds of individually made pieces of artist-made paper, each color unique, a subtle gradation of richly pigmented pulp.

Like a meditation, repeating and yet changing, the art work represents a transformation, moments in time, manifested in color, a celebration of the whole.

### **Double Vertical Spectrum** (far left)

2021 • 14" w x 33" h x 3.5" d  
Two columns of continuous gradation increase the vibrancy of color through juxtaposition.

### **Horizon Blues**

2022 • 25" w x 37" h x 3.5" d  
Evocative of dawn after the darkness of night, paper made from pigmented abaca and linen pulp.

[www.ellenmearskennedy.com](http://www.ellenmearskennedy.com) • [emearskenn@aol.com](mailto:emearskenn@aol.com) • booth 502



The Visual Arts Center of Richmond's 59th Annual

# CRAFT + DESIGN

MAIN STREET STATION | NOVEMBER 17-19, 2023

- + Two full days of shopping
- + 150+ artists from across the country
- + Local maker booths + free art workshops
- + Beer Garden + Local Food Vendors
- + Patrons' Preview Party
- + Rise + Shine Brunch
- + Free art workshops



Learn more at [craftanddesignrva.com](https://craftanddesignrva.com)



## IMPACT100

PHILADELPHIA

Women Giving As One

15 YEARS OF GRANT-MAKING

### Women's Collective Giving Organization

**\$5m awarded to 80+ nonprofits in Philadelphia & surrounding counties**



5 grant focus areas  
including  
Arts & Culture

**JOIN NOW!**  
2024  
Grant-Making  
Year

Ad donated by Impact100 members



BOOTH 217  
**PAZ SINTES**

*Textile Jewelry*  
*New York*

[pazsintes.com](http://pazsintes.com)

[contact@pazsintes.com](mailto:contact@pazsintes.com)

*McCormick Brothers*  
*Professional Garment Care*

MCCORMICKBROTHERS.COM

# The 47<sup>th</sup> Annual Philadelphia Museum of Art Craft Show is produced by The Women's Committee and the Craft Show Committee of the Philadelphia Museum of Art

## Past Chairs of the Philadelphia Craft Show

1977	Mrs. Thomas T. Fleming	2000	Mrs. Robert A. Fox
	Mrs. William C. Lowry III	2001	Elissa G. Topol
1978	Mrs. Thomas T. Fleming	2002	Katharine A.S. Padulo
	Mrs. William C. Lowry III	2003	Linda G. Fuller
1979	Mrs. Robert L. McNeil, Jr.	2004	Joan R. Momjian
	Mrs. William C. Lowry III	2005	Sally G. Sharkey
	Mrs. William C. Lowry IV	2006	Cathy Altman
1980	Mrs. Robert L. McNeil, Jr.	2007	Susan M. Zelouf
1981	Mrs. Robert L. McNeil, Jr.	2008	Eve Walker
1982	Mrs. C. Marshall Lamason	2009	Amy A. Fox
	Mrs. William C. Lowry IV	2010	Marta Adelson
	Mrs. Collin F. McNeil	2011	Reid N. Bodek
1983	Mrs. I. Wistar Morris III	2012	Lisa Woolbert
1984	Mrs. I. Wistar Morris III	2013	Laura Rothrock
1985	Mrs. Donelson R. Manley	2014	Carol Blank Barsh
1986	Mrs. Donelson R. Manley	2015	Ellen Caplan
1987	Mrs. John J. F. Sherrerd	2016	Gwen Goodwill Bianchi
1988	Mrs. Leonard Klorfine	2017	Pam Yih
1989	Mrs. Stephen R. Jacobs	2018	Michele V. Brotman
1990	Mrs. Edward S. Madara, Jr.	2019	Anja Levitties
1991	Mrs. Christopher H. Gadsden	2020	Robin Blumenfeld Switzenbaum
1992	Mrs. Alfred W. Putnam, Jr.	2021	Sally G. Sharkey
1993	Mrs. Harold W. Pote	2022	Melissa Clark
1994	Mrs. John A. Affleck		
1995	Beverly M. Wilde		
1996	Mrs. Morgan R. Jones		
1997	Mrs. Robert W. Connor		
1998	Ellen Simon		
1999	Mrs. Richard Rothman		

## Directors

Susan Zelouf, *Chair*  
Marta Adelson\*  
Cathy Altman\*  
Carol Blank Barsh\*  
Gwen Goodwill Bianchi  
Michele Brotman  
Kristine Christensen\*

Melissa Clark\*  
Anja Levitties  
Ami Lonner\*  
Laura Rothrock  
Ellen Simon

\*ex-officio

## Craft Show Committee Members

Ami Lonner, *Show Chair*

Kristine Christensen, *Show Vice-Chair*

Susan Charleston, *Show Treasurer*

Susan Zelouf, *Chair, Craft Show Directors*

Marta Adelson, *Women's Committee President*

Nancy O'Meara, *Craft Show Manager*

Cathy Altman

Jill Aschkenasy

Carol Blank Barsh

Bruce Baumstein

Gwen Goodwill Bianchi

Ilene Blain

Charlotte Blankfield

Janice Block

Robin Blumenfeld

Reid N. Bodek

Lisette Bralow

Kay Braun

Michele Brotman

Gigi Bruce

Ellen Caplan

Florence Caplan

Juliet Childs

Mary Ann Chou

Melissa Clark

Candace Coleman

Veronica M. Connor

Bonnie Derr

Jacqueline Dickman

Linda Dooney

Kim Emmons-Benjet

Kirstin Engelman

Margo Eremus

Amy A. Fox

Penny Fox

Linda G. Fuller

Clare Fullerton

Eleanore H. Gadsden

Angela Gatto-Rekant

Frances Gerson

Sis Kapnek Grenald

Barbara L. Gross

Barbara S. Gross

Suzanne C. Jacobs

Carol W. Jones

Mary Kahn

Magen Kauffman

Debbie Kelly

Norma E. Klorfine

Julie Kronfeld

Emilie Lapham

Myrna Levin

Anja Levitties

Anita Lockhart

Linda Matrunich

Paige McAfee

Joan R. Momjian

Katharine A.S. Padulo

Zoe Pappas

Barbara Podell

Sue Pohanka

Judy C. Pote

Olivia Rabe

Emily Reiner

Venetta R. Robinson

Eve Prensky Roe

Ann Dee Rome

Marsha W. Rothman

Laura Rothrock

Francyn Elion Sacks

Mary Ellen Schneider

Randy Schwartz

Liz Shapiro

Sally Sharkey

Genvieve Shields

Amy Silverman

Ellen B. Simon

Lenee Stein

Keith Straw

Elissa G. Topol

Nancy Uffner

Susan Vitale

Donna Walker

Eve Walker

Beverly M. Wilde

Lisa Williamson

Pam Yih

## SPECIAL THANKS TO OUR 2023 JURORS

### **Sam Harvey, Aspen, CO, Artist and Owner, Harvey Preston Gallery**

Sam has been an artist in residence at Sun Valley Center and Anderson Ranch Arts Center. He has taught and nationally and internationally, including at Anderson Ranch and in Nepal, Taiwan, and Japan. He has shown nationally at such venues as Lill Street Arts Center, Chicago; Santa Fe Clay, Santa Fe; Trax Gallery, Berkeley, CA. Harvey Preston Gallery specializes in contemporary ceramic art, works on paper, and sculpture. Working with nationally and internationally recognized talent; the gallery's focus is to forefront the work of artists willing to push the boundaries of their ideas and materials.

### **Anais Missakian, Providence, RI, Provost, Rhode Island School of Design**

Before assuming the role of provost at RISD in July 2022, Anais was the Pevaroff-Cohn Family Endowed Chair in Textiles and professor and graduate program director of Textiles. Most recently, Missakian was textile lead at Advanced Functional Fabrics of America (AFFOA), and one of the latest members of the National Network of Manufacturing Innovation (NNMI) Institutes. She works with a team of material scientists, engineers, textile designers and product designers to collaborate on projects that focus on the transformation of traditional fibers, yarns and textiles into highly sophisticated integrated and networked devices and systems.

### **Gregg Moore, Glenside, PA, Professor, Department of Art and Design, Arcadia University**

Gregg is an artist, designer and Professor at the College of Arts, Humanities & Social Science, Arcadia University, where he directs the Ceramics program. His studio practice explores the relationship between ceramics and new media, drawing from fundamental historical foundations while questioning and investigating perceptions of the ceramic field. His most recent project consists of a line of earthenware and porcelain tableware, mixed media sculpture and multimedia and video-based installation examining the practices of gardening, farming and eating.

### **Sienna Patti, Lenox, MA, Founder and Director, Sienna Patti Contemporary**

With a curiosity about the history of ornament and adornment Sienna worked at the Metropolitan Museum of Art in the American Decorative Arts and Design Department as an assistant to the curator. In 1998, Patti founded Sienna Gallery (now, Sienna Patti Contemporary). The Gallery has since established itself as one of the most prominent and groundbreaking design and jewelry galleries in the world. Since 2000 Patti has curated over 150 exhibitions in and out of the gallery worldwide. As an advisor to major public and private collections Patti has placed works in museums around the world including, to name a few, the Metropolitan Museum of Art, New York; The Victoria and Albert Museum, London; the Musee de Louvre, Paris; and the Philadelphia Museum of Art.

## 2023 Craft Show

### Best of Show

\$1,500

*Sponsored by the Fleming Family in honor of Fifi Fleming and Mary Lee Lowry.*

### National Awards

The Philadelphia Museum of Art Craft Show gratefully acknowledges the generosity of the following organizations in awarding prizes in the amount of \$1,000 to individual craft artists:

- The Eric Berg Prize for Excellence in Metal
- The Louise K. Binswanger Prize for Best Artist New to the Show
- The Cohn Family Trust Prize for Excellence in Glass
- The Prize for Excellence in Fiber Art
- The Jane and Leonard Korman Family Prize for Excellence in Clay
- The Levitties Family Prize for Excellence in Design
- The Ornament Magazine Prize for Excellence in Art to Wear
- The Prize for Excellence in Jewelry
- The Wharton Esherick Museum Prize for Excellence in Wood

## Thank you to our PREVIEW PARTY PATRONS for their generous support, 2023.

### VISIONARY

Marta and Robert Adelson Family Foundation  
Catherine Altman  
Edith R. Dixon  
Amy A. Fox and Daniel H. Wheeler

Penny Fox  
Leonard Korman\*  
Rite Rug Co  
Sally Sharkey

### ANGEL

Anonymous  
Janice and Arthur Block  
Martha Hamilton and I. Wistar Morris, III  
Ami and Jess Lonner  
Miriam Mandell  
Zoë S. Pappas  
Barbara A. Podell and Mark G. Singer

Marsha W. Rothman  
Laura and Kirk Rothrock  
Robin and Mark Rubenstein  
Judith and David Wachs Family Foundation  
Carol E. Ware  
Harriet and Larry Weiss  
Susan and David Zelouf

### BENEFACTOR

Abacus Planning Group, Inc  
Dr. and Mrs. Todd Albert  
Dennis Alter  
Sally and Devin Aronstam  
Jill and Paul Aschkenasy  
Pat and David Atkinson  
Dr. Regina Voit Baime and Peter Liguori  
Andrea M. Baldeck, M.D.  
Carol and Horace Barsh  
Jonathan Bassman Interior Design  
Kim Emmons-Benjet and Brian Benjet  
Connie Berg, Berkshire Hathaway  
Julie C. and Lawrence H. Berger  
Gwen Goodwill Bianchi  
Robin Blumenfeld  
Lois and Julian Brodsky  
Michele and Jeff Brotman  
Lloyd Brown  
Laura T. Buck  
Ellen and Ron Caplan  
Mary Ann C. and George C. Chou  
Kristine Christensen  
Melissa and David Clark  
Shirley and Gene Cordes  
Cozen O'Connor  
Jaqueline and Mitchell Dickman  
Michelle and Eugene Dubay  
Peter C. Egan  
Kirstin and Jeffrey Engelman  
James G. Fulton, Jr. and Eric B. Rymshaw  
Frances R. and William A. Graham, IV  
Anne and Matt Hamilton  
Penelope P. Harris  
Hannah L. Henderson  
Margie and Jeffrey Honickman  
Ruth and Richard Horowitz

Cynthia Lee Johnson  
Arthur M. Kaplan and R. Duane Perry  
The Kestenbaum Family Foundation  
Judy and Peter Leone  
Anja and Matthew Levitties  
Dana and John Levitties  
Maxine deS. Lewis  
Tina and Jeffrey Lurie  
John J. Medveckis  
Leslie A. Miller and Richard B. Worley  
Linda and Laddie Montague  
Dr. & Mrs. Steven Nierenberg  
Marie O'Donnell and Bruce Satalof  
Katharine and Louis Padulo  
Laurie Phillips and Barry A. Milberg  
Sue Pohanka and Jay Madden  
The Quaker City Foundation  
Lizabeth and Stephen Raynes  
Drs. Angela and Mark Rekant  
Jennifer Rice and Michael Forman  
Lisa Roberts and David Seltzer  
Ann Dee and Joel Rome  
Lyn M. Ross  
Michele and David Rubenstein  
Julie and Jordan Savitch  
Rebecca and Greg Segall  
Irene Shabel  
Ellen B. Simon  
Jerald E. Slipakoff  
The Specter Family Foundation  
Mrs. Judith Taylor  
Barbara Tober  
Elissa Topol and Lee Osterman  
Constance and Sankey Williams  
Lisa and Lars Williamson  
Pam and Don Yih  
Sharon and Sam Yoh

## COLLECTOR

Charna Axelrod  
Elyse and Max Berger  
Samuel Bitonti  
Ilene Blain  
Jamie and Ken Bleznak  
Judith Block  
Reid Bodek  
Lisette Bralow  
Wendy and Mort Branzburg  
Kay Braun  
Ira Brind and Stacey Spector  
Gigi and Scott Bruce  
Pamela and Robert Byers  
Florence Caplan  
Elise W. Carr  
Ellen Carver  
Susan Charleston and Ken Davis  
Karen and Stewart Cohen  
Candace H. Coleman  
Dr. and Mrs. Robert W. Connor  
Carole and Doug Cook  
Maude de Schauensee  
Dashing Designs Inc.  
Eleanor L. Davis  
Bonnie C. Derr  
Bonnie Eisner  
Helen W. Drutt English  
Margo Perry Eremus  
Henry C. Fader  
Mary and Joe Fenkel  
Jaimie and David Field  
Stevie Fischer  
Linda G. Fuller  
Elizabeth H. Gemmill  
Maxine Goldberg  
Linda Golden  
Barbara L. and Lawrence Gross  
Barbara S. Gross  
Arlene and Jack Grossman  
Cynthia Holstad  
Steve Holstad Jr.  
Sue and Steve Jacobs  
Joan M. Johnson  
Carol W. Jones  
Margaret Jones  
Mary W. Kahn  
Wendy and Ted Kapnek  
Susan Katzenberg and Anne Stone  
Magen Kauffman Interiors  
Debbie and Paul Kelly  
Sharon and Richard Kollender  
Karen and Bill Kramer  
Mr. and Mrs. Stephen L. Kurtz

Cari Lasdon  
Myrna Levin  
Jon Liss  
Anita and Pete Lockhart  
Sueyun Locks  
Mickey and Larry Magid  
Fred Manfred  
Linda Matrunich and Patrick Grannan  
Ann and Alan McIlvain  
Harvey S. Shipley Miller  
Maida R. Milone  
Joan R. Momjian  
Sara Nerken  
Danuta Nitecki  
Mr. and Mrs. William L. Oliver  
Aleni Pappas  
Karen and James Pearlstein  
Jane G. Pepper  
Ronald Phillips  
Olivia Rabe  
Jill Snyder Reiff  
Stephanie Resnick  
Gilroy and Lillian P. Roberts Foundation  
Eve Prensky Roe  
Linda Saad  
Katherine Sachs  
Karyn L. Scher  
Randy Jill Schwartz  
Toni Seidl and Rick Berkman  
Liz Shapiro  
Carol Nelson Shepherd  
Susan Sherman  
Genvieve Shields  
Amy Silverman  
Janeane Sloane  
Mrs. John L. Steigerwalt  
Lenore Stein  
Lisa Stone Design  
Charlotte Stellwagen Suspenski  
Debbie Feith Tye  
Nancy W. Uffner  
Susan Vitale  
Donna Walker  
Mr. and Mrs. William D. Walker  
Beverly and Norm Wilde  
Lisa and Rich Woolbert  
Eve and Richard Wyckoff

\*deceased

Due to printing deadline, list is incomplete.



## INDEX

### EXHIBITOR LISTINGS

- 4-36 Exhibitor Directory
- 37-42 Exhibitor listings by Medium and by Booth Number

### ADVERTISERS AND SPONSORS

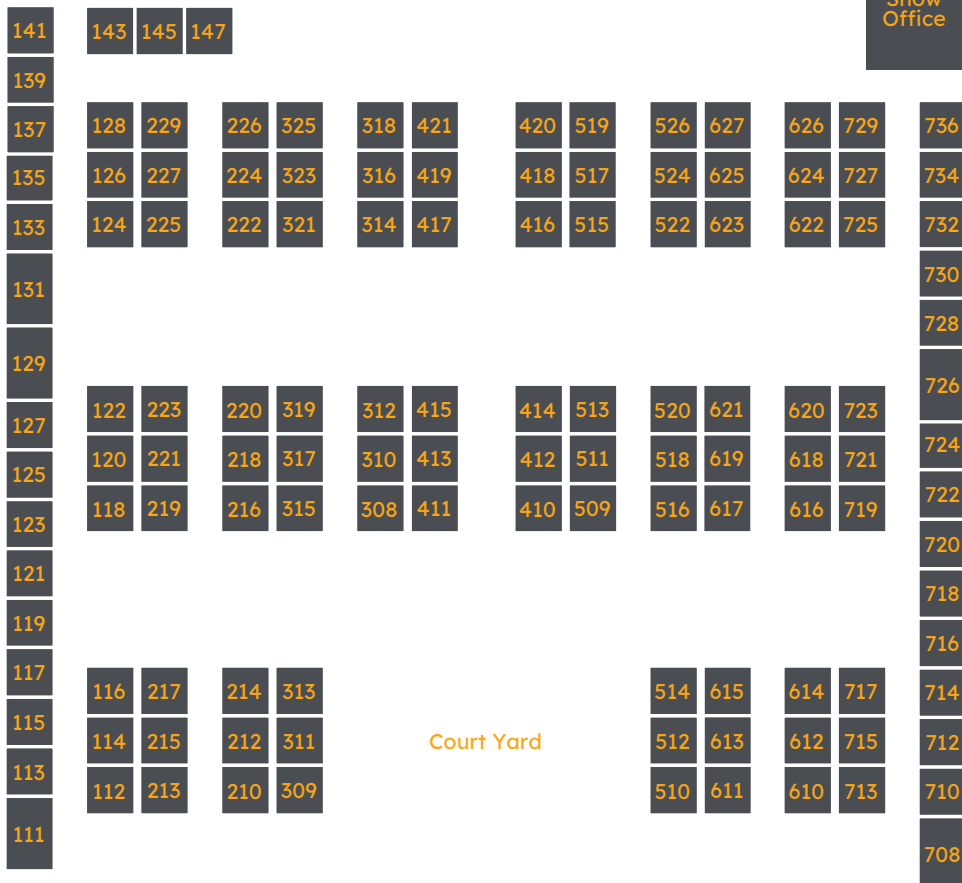
- 60 Connie Berg, Berkshire Hathaway
- 70 Jeff City Block
- 52 Corient
- 72 Craft + Design, Visual Arts Center of Richmond
- 65 Craft in America
- 71 Joanne Davidow, BHHS Fox & Roach, Realtors
- 46 Frank Financial Consulting Group
- 57 Freeman's
- 43 Goldman Sachs
- 69 Gravers Lane Gallery
- 72 Impact100 Philadelphia
- 70 Juried Art Services
- 71 Ellen Mears Kennedy, Booth 502
- 44 Jane and Leonard Korman Family Foundation
- 45 Maguire Foundation
- 53 The McCausland Foundation
- 73 McCormick Brothers, Professional Garment Care
- 49 Mill Creek
- 63 Morgan Stanley, Plotnick Forman Group
- 51 Morgan Stanley, The Richman Group
- 54 Osage
- 47 Parkway Corporation
- 50 Philadelphia Hand to Shoulder Center
- 55 Philadelphia Museum of Art Associates and Chairman's Council
- 64 2024 Philadelphia Museum of Art Craft Show
- 61 Philadelphia Museum of Art Fiske Kimball Society
- 66 The Philadelphia Show
- 62 Rago
- 59 Rothman Orthopaedics
- 68 Route29
- 56 Sage Financial Group
- 58 SD Associates, PC
- 73 Paz Sintes, Booth 217
- 48 Stradley Ronon
- 67 Wayne Art Center, Craft Forms 2023

## SHOW NOTES

# Floor Plan

## Restrooms

Show  
Office



## Court Yard

## Restrooms

## Restrooms

## Entrance

(Floor Plan NOT to scale)

**Thank you** to our Show Sponsors  
for their generous support.

**Goldman  
Sachs**

**M** Maguire  
Foundation

JANE & LEONARD KORMAN FAMILY FOUNDATION

**MILL CREEK**  
Our values appreciate yours

THE  
MCCAUSLAND  
FOUNDATION

**CORIENT**

THE  
**FRANK**  
FINANCIAL CONSULTING GROUP  
*of Wells Fargo Advisors*

**Morgan Stanley**  
PRIVATE WEALTH MANAGEMENT

**OSAGE**  
PARTNERS

**PARKWAY**  
Corporation



PHILADELPHIA  
HAND TO SHOULDER  
CENTER

**STRADLEY  
RONON**

When you purchase a ticket to the Philadelphia Museum of Art Craft Show or become a sponsor of the Show, you are directly supporting the work of the Philadelphia Museum of Art.