

ART
BY
HAND



THE
46TH
ANNUAL
PHILADELPHIA
MUSEUM
OF ART

CONTEMPORARY
CRAFT
SHOW

Gifts to the Philadelphia Museum of Art

When you purchase a ticket to the Philadelphia Museum of Art Craft Show or become a sponsor of the Show, you are directly supporting the work of the Philadelphia Museum of Art. Thanks to your support, the Craft Show has contributed **\$14 million over a 45-year period.**



Proceeds annually support the Guides Programs and American Craft acquisitions.

Additional programs funded from the 2021 Show proceeds include the current special exhibition, **Matisse in the 1930s** on view until January 29, 2023.

Matisse in the 1930s features a collection of the legendary artist's work during a decade of artistic exploration—from experimentation, to failure, to renewal—with Philadelphia as a backdrop. Come learn about his time in Philadelphia and discover how it influenced his work for years to come, through more than 100 paintings, sculptures, prints, and drawings. Reserve your tickets now for the only chance to see this incredible show in the United States before it heads to Paris. **Visit www.philamuseum.org for tickets and information.**

**Presented by the Craft Show Committee and
The Women's Committee of the Philadelphia
Museum of Art for the benefit of the
Philadelphia Museum of Art.**

November 10, 2022

Preview Party, 4:00 to 9:00 p.m.

November 11, 2022

Open to the public 11:00 a.m. to 7:00 p.m.

November 12, 2022

Open to the public 10:00 a.m. to 6:00 p.m.

November 13, 2022

Open to the public 10:00 a.m. to 5:00 p.m.



Featured on the cover

Steven Ford and David Forlano
(American, each born 1964)

Pillow Collar Necklace, 2009

Polymer clay, silver, gold

Philadelphia Museum of Art:

Gift of the Women's Committee in
memory of Anne d'Harnoncourt, 2008

Dear Friends,

The Craft Show Committee continues to produce the largest annual fund-raising event for the Philadelphia Museum of Art. To date, the Show has raised more than \$14 million for the Museum. These funds provide financial support for educational programs, special exhibitions, equipment, the acquisition of art and craft for the permanent collection, and various other programs and projects.

Our deepest gratitude is extended to our show sponsors for their remarkable generosity: Goldman Sachs, Maguire Foundation, Jane & Leonard Korman Family Foundation, Freeman's, Jonathan Bassman, Clarks Manor Elwyn, Parkway, Morgan Stanley Wealth Management, Philadelphia Hand to Shoulder Center, Mill Creek, The McCausland Foundation, JP Morgan and UBS.

Please join us in welcoming to Philadelphia the finest artists from across the country. Special welcome to this year's guest booths to the Show: Schiffer Publishing and Freeman's.

Much appreciation goes to the Craft Show Committee; a group of one hundred dedicated women who spend thousands of volunteer hours to plan and produce the Show. Thanks also to the Women's Committee and the Museum staff for their efforts on behalf of the Show. We are grateful to our Preview Party Patrons for your generous support of the Preview Party. Your loyalty ensures the success of the Show.

Finally, special recognition is extended to our show manager, Nancy O'Meara. Over the past 30 years, she has helped develop the Show into an exceptional event. We are grateful for her notable expertise, remarkable talent, and diplomatic skills.

Enjoy the 2022 Philadelphia Museum of Art Contemporary Craft Show!

Melissa Clark

Chair, 2022 Craft Show

Cathy Altman

President, The Women's Committee

About the cover

Steven Ford and David Forlano met during a semester abroad in Italy in 1985 through Temple University's Tyler School of Art. After college, their desire to make fine paintings and eat, led them to work together in construction. Working construction during the day, left little time and energy for studio time. They switched focus and began collaborating on a jewelry collection. Using their love of color and design, Steven and David were early adopters to creating and experimenting with the lesser used material of polymer clay which over time led to developing their unique one-of-a-kind necklaces and bracelets. Meant as a way to continue making money to support their love of painting, their unexpected segue turned into a 34-year career as fine craft artists. In 1990, they were juried into the Philadelphia Museum of Art Craft Show for the first time and as a result, their career in jewelry design grew exponentially. "We both know our success was connected directly to showcasing our work at the PMA Craft Show," says Steven Ford. "It's a show that attracts such amazing collectors who come from all around the country."

Since Ford and Forlano's first Philadelphia Museum of Art Craft Show, several notable museums have purchased their work for their permanent collections, including The Philadelphia Museum of Art, The Museum of Art & Design in New York City, The Los Angeles County Museum of Art, and The Museum of Fine Arts in Boston, MA. At this Show and 32 years after their very first time at the

Philadelphia Museum of Art Craft Show, Ford + Forlano will exhibit together for their last time. "The Philadelphia Museum of Art Craft Show has always been our place to launch new pieces," remarks David Forlano. "The new work would appear there first, because we knew that the audience was sophisticated and would respond honestly. We can't wait to bring our 30-year retrospective to our loyal audience as well as new faces at the PMA Craft Show this November."



**Visit Ford + Forlano
in booth #300,
for their last appearance at
the Philadelphia Museum of Art
Contemporary Craft Show.**

Directory of Exhibitors

Nicolette Absil

Philadelphia, PA
www.nicoletteabsil.com
133 Jewelry



Elyse Allen

Santa Fe, NM
(917) 626-5617
www.elyseallentextiles.com
208 Fiber Wearable



Debra Adelson

Collingswood, NJ
(413) 687-5126
www.debraadelsonjewelry.com
519 Jewelry



Leda Almar

Pembroke Pines, FL
(954) 534-3771
www.ledaalmar.com
127 Emerging Artist - Ceramics



Lawrence Agnello

Amityville, NY
(516) 848-6672
www.assemblique.com
716 Mixed Media



Jennifer Armstrong & Tanya Alsberg

Kennebunkport, ME
(330) 689-6849
www.jakdesigns.com
515 Fiber Wearable



Directory of Exhibitors

Laura Baring-Gould Studios

Somerville, MA
(617) 947-9580
www.baringgouldbronzeworks.com
420 Basketry and Metal



Annie Bisone

Milwaukee, WI
(414) 426-9607
www.laloworkshop.com
106 Fiber Wearable



Laura Bertapelle

Philadelphia, PA
(360) 204-0684
www.laurabertapelle.com
730 Emerging Artist - Furniture



Anna Boothe

Zieglerville, PA
(610) 715-8732
www.patedeverity.com
325 Glass



Bonnie Bishoff & J.M. Syron

Brunswick, ME
(978) 500-9271
www.syronbishoff.com
309 Mixed Media



Christina Boy

Madison, VA
(540) 718-7777
www.christinaboydesign.com
607 Furniture



Directory of Exhibitors

Ashley Buchanan

Marietta, GA
(770) 639-7256
www.ashleybuchananjewelry.com
713 Jewelry



Sandra Byers

Rock Springs, WI
(608)-522-5648
www.thebyersstudio.com
711 Ceramics



Katia Bulbenko

Weehawken, NJ
(201) 213-1057
www.katiabulbenko.art
610 Mixed Media



Winthrop Byers

Rock Springs, WI
(608) 522-5648
www.thebyersstudio.com
704 Ceramics



Laura Burkett

Pawtucket, RI
(617) 708-6404
www.lauraburkettdesigns.com
504 Leather



Ben Caldwell

Nashville, TN
(615) 218-2460
www.benandlael.com
627 Metal



Directory of Exhibitors

Karen & Geoffrey Caldwell

Stockton, NJ
(908) 892-3995
www.SunflowerGlassStudio.com
220 Glass



Theresa Carson

Baltimore, MD
(410) 558-3987
www.theresacarson.com
625 Jewelry



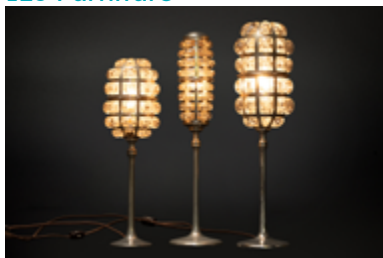
John Cameron

Gloucester, MA
(978) 283-0276
www.johncameroncabinetmaker.com
120 Furniture



Evan Chambers

Pasadena, CA
(805) 215-9269
www.evanchambersobjects.com
128 Furniture



Kimmy Cantrell

College Park, GA
(404) 556-0190
www.kimart.com
609 Ceramics



Teresa Chang

Philadelphia, PA
(267) 255-6209
www.teresachang.com
413 Ceramics



Directory of Exhibitors

Dwo Wen Chen

Providence, RI
(401) 580-0936
www.threewheelstudio.com

321 Ceramics



Namu Cho

Bethesda, MD
(301) 404-6789
www.studionamu.com

732 Jewelry



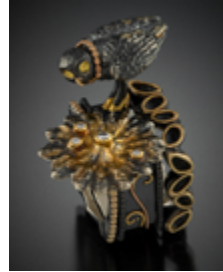
Suyu Chen

Rochester, NY
(646) 706-1004
www.suyuchen.com
724 Emerging Artist - Jewelry



Ann Marie Cianciolo

Milwaukee, WI
(414) 336-6100
www.annsjewelry.com
520 Jewelry



Jennifer Chin

Boston, MA
(617) 922-2546
www.lushmetals.com
203 Jewelry



Petra Class/Lucas Class-Knorr

New York, NY
(415) 503-7440
www.petraclassjewelry.com
312 Jewelry



Directory of Exhibitors

Constance Collins

Indianapolis, IN
(847) 830-7425
www.constancecollins.com
505 Fiber Decorative



Margo Csipo

Baltimore, MD
(410) 608-8850
www.margocsipo.com
705 Emerging Artist - Jewelry



Deborah Cross & Gordon Heinel

Santa Cruz, CA
(831) 345-0262
www.deborahcross.com
706 Fiber Wearable



Lisa and Scott Cylinder

Brunswick, ME
(610) 780-2331
www.lisaandscottcylinder.com
721 Jewelry and Mixed Media



Adam T. Crowell

Bonneau, SC
(310) 367-3685
www.boxedmusic.com
227 Mixed Media



Kate Dannenberg

Philadelphia, PA
(215) 510 7231
www.katedannenberg.com
522 Jewelry and Metal



Directory of Exhibitors

Rachel David

Waynesville, NC
(504) 452-8288
www.redmetal.net
613 Furniture



Stephanie Dubsy

New York, NY
(917) 292-0374
www.stephaniedubsky.com
705 Emerging Artist - Jewelry



Sharon & Mark Diebolt

Rochester, NY
(585) 880-3326
www.hammilldiebolt.com
311 Wood



Marla Duran

Allentown, PA
(610) 392-5595
www.marladuran.com
131 Fiber Wearable



Victor Di Novi

Santa Barbara, CA
(805) 698-4090
www.victordinovi.com
507 Furniture



Maria Eife

Philadelphia, PA
(215) 990-4575
www.mariaeife.com
509 Jewelry



Directory of Exhibitors

Lisa B. Evans Ceramics

Brunswick, ME
(207) 409-6293
www.lisabevans.com
615 Ceramics



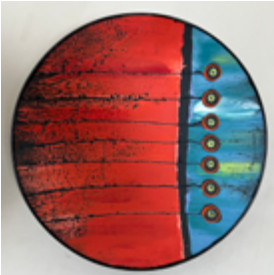
Deborah Falls

Belfast, ME
(802) 356-4116
www.deborahfalls.com
403 Fiber Decorative



Nicholas Everett

Eagle, CO
(970) 930-2259
www.everettstudio.co
200 Ceramics



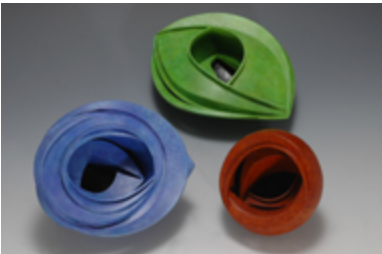
Beth Farber

Dobbs Ferry, NY
(612) 202-7047
www.elizabethfarber.com
416 Jewelry



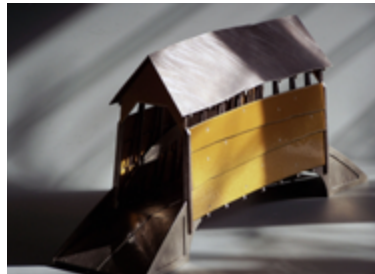
Darlys Ewoldt

Chicago, IL
(773) 339-2095
www.darlysewoldt.com
119 Metal



Robert Farrell

Fort Atkinson, WI
(941) 408-3681
www.farrellsilver.com
316 Metal



Directory of Exhibitors

Amy Faust

Oakland, CA
(415) 452-9070
www.amyfaust.com
123 Jewelry



Freeman's

Philadelphia, PA
www.freemansauction.com
628

FREEMAN'S

Pat Flynn

High Falls, NY
(845) 687-2266
www.patflynninc.com
209 Jewelry



Joel Fremion

Ossian, IN
(260) 414-0865
www.fremionart.com
118 Fiber Decorative



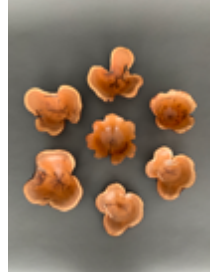
Steven Ford & David Forlano

Philadelphia, PA
(215) 704-2745
www.fordforlano.com
300 Jewelry



Diana Friend

Stuart Island, WA
(610) 745-1740
www.dianafriendbowls.com
620 Wood



Directory of Exhibitors

Greg Fuguet & Kristen Snow

Philadelphia, PA
(484) 947-8792
www.fuugs.com
709 Furniture



Phil Gautreau

Brooklyn, NY
(347) 461-1744
www.philgautreau.net
512 Wood



Pong Gaddi

Buffalo, NY
(716) 863-2217
www.pgaddi.com
719 Leather



Alexandra Geller

Easthampton, MA
(781) 775-6090
www.alexandrageller.com
616 Ceramics



Kate Gakenheimer

Cambridge, MA
(857) 998-7084
www.kategakenheimer.com
415 Glass



Kristin Gereau

Waukesha, WI
(414) 704-7202
www.KGTextiles.com
125 Fiber Wearable



Directory of Exhibitors

Galen Gibson-Cornell

Philadelphia, PA
(660) 853-1209
www.galengibsoncornell.com
100 Paper



Danielle Gori-Montanelli

Middlebury, VT
(802) 771-5489
www.studiodgm.com
111 Jewelry



Geoffrey Giles

Asheville, NC
(828) 280-4389
www.geoffreydgiles.com
314 Jewelry



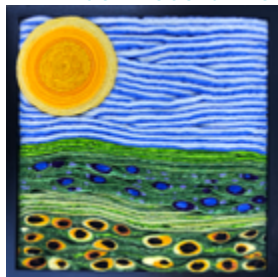
Isabelle Gougenheim Design

Chicago, IL
(312) 953 9097
www.isabellegougenheimdesigns.com
621 Fiber Wearable



Amy Gillespie

Orleans, MA
(617) 359-9973
www.amygillespiestudio.com
726 Fiber Decorative



Rob Greene

Marshfield, VT
(802) 238-2001
www.robgreenejewelry.com
112 Jewelry



Directory of Exhibitors

Ryan Greenheck

Spring City, PA
(607) 382-5326
www.ryanjgreenheck.com
115 Ceramics



Nicole Haddad & Jordan Haddad

Philadelphia, PA
(610) 316-9821
www.lobomau.com
122 Fiber Wearable



Xinia Guan

Savannah, GA
(912) 318-4799
www.xiniaguan.com
717 Jewelry



Andrea Geer Handy

Rochester, NY
(585) 739-7465
www.andrageerdesigns.com
603 Fiber Wearable



Rebecca Haas

Chester, VT
(917) 405-6866
www.rebeccaahaas.com
117 Jewelry



Denece Harrell

Highlands, NC
(407) 704-9969
www.deneceharrell.com
619 Ceramics



Directory of Exhibitors

Patti & Dave Hegland Glass

Chestertown, MD
(410) 708-5437
www.heglandglass.com
723 Glass



Isys Hennigar

Columbus, NC
(828) 275-7530
www.isyshennigar.com
606 Emerging Artist - Ceramics



Barbara Heinrich

Pittsford, NY
(585) 383-1089
www.barbaraheinrichstudio.com
327 Jewelry



Thomas Herman

Stone Ridge, NY
(845) 853-6643
www.sevenfingers.com
421 Jewelry



Jill Heir

Reinholds, PA
(847) 682-8277
www.intertwinedoriginalart.com
622 Basketry



Lauren Herzak-Bauman

Lakewood, OH
(419) 575-2027
www.laurenhbstudio.com
224 Ceramics



Directory of Exhibitors

Charlotte Hess

Nantucket, MA
(215) 713-4180
www.isobelandcleo.com
508 Fiber Wearable



Scott Hronich

Malta, NY
(805) 509-4497
www.internalfireglass.com
315 Glass



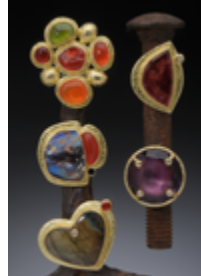
Chie Hitchner

Montgomery, AL
(805) 444-3275
www.chiehitchner.com
105 Fiber Decorative and
Fiber Wearable



Hughes Bosca LLC

Gloucester, MA
(978) 283-3791
www.hughesbosca.com
116 Jewelry



Elizabeth Holliday

Memphis, TN
(901) 485-1358
www.denovocoats.com
516 Fiber Wearable



Angela Humes

Philadelphia, PA
(717) 676-9599
@humesceramics (Instagram)
211 Ceramics



Directory of Exhibitors

Reiko Ishiyama

New York, NY
(646) 623-9771
www.reikoishiyama.com
612 Jewelry



Ryan Jones

Raleigh, NC
(502) 409-3504
www.rootsandjones.com
323 Mixed Media



Mary Jaeger

Brooklyn, NY
(917) 416-2686
www.maryjaeger.com
318 Fiber Wearable



Catherine Joseph

Huntington, NY
(631) 385-4517
www.cjosephny.com
216 Fiber Wearable



Ray Jones

Asheville, NC
(828) 298-6007
www.rayjoneswoodboxes.com
526 Wood



Audrey Jung

San Francisco, CA
(415) 317-1675
www.audreymodern.com
302 Fiber Wearable



Directory of Exhibitors

Harold Kalmus

Arden, DE
(302) 529-1516
www.kalmusknives.com
102 Mixed Media



Lori Katz

Alexandria, VA
(703) 475-1640
www.lorikatz.com
710 Ceramics



Wiwat Kamolpornwijit

Alexandria, VA
(703) 340-6690
www.wiwat-kamolpornwijit.com
310 Jewelry



Judith Kaufman

West Hartford, CT
(860) 214-1881
www.judithkaufman.com
514 Jewelry



Ani Kasten

Shafer, MN
(240) 460-3008
www.anikasten.com
206 Ceramics



Nicholas Kekic

Bellows Falls, VT
(802) 875-1825
www.tsugastudios.com
614 Glass



Directory of Exhibitors

Ahrong Kim

Jersey City, NJ
(401) 497-1197
www.ahrongkim.com
412 Ceramics



Nancy Kubale

Rutherfordton, NC
(828) 289-0978
www.nancykubale.com
405 Ceramics



Ann Klem

Fisherville, KY
(502) 817-8635
www.annklem.com
121 Glass



Megan Lagueruela

Greensboro, NC
(336) 870-5052
www.megan-ilene.com
715 Fiber Wearable



Christy Klug

Grand Rapids, MI
(512) 484-1805
www.christyklug.com
225 Jewelry



Aron Leaman

Dracut, MA
(978) 317-4756
www.aronleamanglass.com
219 Glass



Directory of Exhibitors

Cliff Lee

Stevens, PA
717-799-3654
www.cliffleeporcelain.com
728 Ceramics



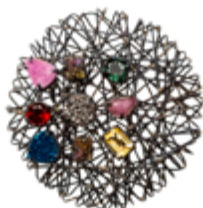
Susan Lenz

Columbia, SC
(803) 254-0842
www.susanlenz.com
303 Basketry and Fiber Decorative



Jeong Ju Lee

Rochester, NY
(585) 503-4416
www.jeongjulee.com
605 Jewelry



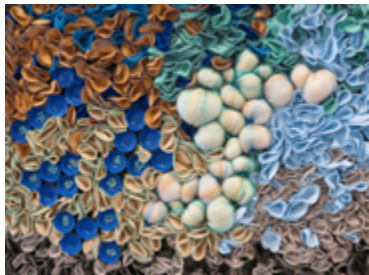
Beth Levine

Patterson, NY
(212) 691-1087
www.bethlevinedesign.com
417 Fiber Decorative and Leather



Kate Leibrand

Philadelphia, PA
(856) 220-6247
www.kateleibrand.com
409 Fiber Decorative



Meg Little

Newport, RI
www.meglittle.com
718 Fiber Decorative



Directory of Exhibitors

Mimi Logothesis

Cedar Grove, NC
(609) 707-1231
www.mimilogothesis.com
707 Ceramics



Flavia Lovatelli

Columbia, SC
(704) 450-7363
www.flavia-lovatelli.com
307 Paper



Kari Lonning

Ridgefield, CT
(203) 431-0617
www.karibaskets.com
213 Basketry



Karin Luvaas

Bainbridge Island, WA
(650) 868-2720
www.karinluvaas.com
215 Emerging Artist - Jewelry



Jorgelina Lopez & Marco Duenas

Baltimore, MD
(443) 427-0715
www.laloupedesign.com
207 Furniture



Lauren Markley

Raleigh, NC
(609) 240-7015
www.laurenmarkleyjewelry.com
626 Jewelry



Directory of Exhibitors

John Mascoll

Safety Harbor, FL
(727) 709-0299
www.johnmascoll.com
319 Wood



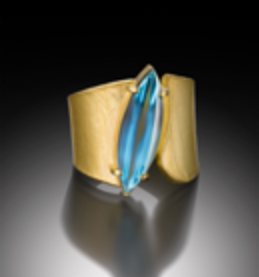
Kreg McCune

Seal Cove, ME
(207) 812-6875
www.kregmccunepottery.com
517 Ceramics



Ayesha Mayadas

Southfield, MA
585-755-9866
www.ayeshastudio.com
406 Jewelry



Jennifer McCurdy

Vineyard Haven, MA
(508) 627-0443
www.jennifermccurdy.com
408 Ceramics



Valerie Mayen

Cleveland, OH
(361) 813-4308
www.yellowcakeshop.com
502 Fiber Wearable



Michael Mikula

Cleveland, OH
(216) 659-7187
www.mikulaglass.com
222 Glass



Directory of Exhibitors

Steve Miller

Black Mountain, NC
(305) 510-8910
www.naturesturnwoodturnings.com
212 Wood



Karen Morris

Roseville, MN
(612) 839-4857
www.kmhats.com
510 Fiber Wearable



Claudia Mills

Philadelphia, PA
215-806-7514
www.claudiamills.com
205 Fiber Decorative



Brenda Morrison

Wareham, MA
(617) 645-1969
www.jasminekeane.com
518 Jewelry



Holly Anne Mitchell

Indianapolis, IN
(317) 209-6158
www.newspaperjewelry.com
617 Jewelry



Ashley Murphy

Lincoln University, PA
(610) 476-6668
www.ashleymurphy.online
306 Wood



Directory of Exhibitors

Matthew Naftzger

Milwaukee, WI
(413) 329-1252
www.matthew.works
108 Metal



J. David Norton

Akron, OH
(330) 867-8330
www.jdavidnorton.com
720 Glass



Nanako (Miller)

New York, NY
(646) 270-8222
www.nanakoclothes.com
109 Fiber Wearable



Pavel Novak

Collingswood, NJ
(413) 687-5127
www.pavelnovakglass.com
407 Glass



Amy Nguyen

Boston, MA
(917) 838-8215
www.amynguyentextiles.com
404 Fiber Wearable



Irina & Dennis Okula

Ipswich, MA
(978) 985-0961
www.clayshards.com
722 Ceramics



Directory of Exhibitors

Susan Otterson

Madison, WI
(608) 770-0664
www.susanotterson.com
729 Fiber Wearable



Rocky Pardo

Alton, IL
(314) 630-8983
www.rockypardo.com
608 Jewelry



Scott Oxenhandler

Philadelphia, PA
(954) 483-7475
www.javelinawoodworking.com
218 Furniture



Jinbi Park

Brooklyn, NY
(347) 886-1285
www.jinbidesign.com
308 Jewelry



Gina Pannorfi

Chicago, IL
(773) 573-0970
www.ginapannorfi.com
410 Fiber Wearable



Keun Ho Peter Park

Philadelphia, PA
(814) 777-3342
www.studiospong.com
229 Furniture



Directory of Exhibitors

Robert Patterson

Milton, GA
(678) 232-4014
www.rpatterson.com
114 Wood



L. Proctor Ironworks

Mount Horeb, WI
(608) 334-0749
www.lproctorironworks.com
126 Furniture



James Pearce

Peoria, IL
(309) 303-6885
www.pearcewoodworks.com
101 Furniture



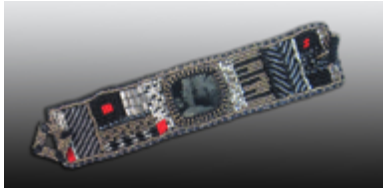
Baiyang Qiu

Palo Alto, CA
(650) 224-2791
www.baiyangjewelry.com
411 Jewelry



Julie Powell

Bellvue, CO
(720) 394-0956
www.juliepowelldesigns.com
107 Fiber Decorative and Jewelry



Mea Rhee

Silver Spring, MD
(301) 495-3793
www.goodelephant.com
221 Ceramics



Directory of Exhibitors

Meghan Patrice Riley Studio

Brooklyn, NY
(646) 504-4363
www.meghanpatriceriley.com
110 Jewelry



Jonathan Rutledge

Evanston, IL
(847) 738-4418
www.rutledgejewelry.com
214 Jewelry



Melinda Risk

West Lafayette, IN
(765) 418-8457
www.melindariskjewelry.com
604 Jewelry



JacQueline Sanchez

Portland, OR
(404) 441-5225
www.jacquelinesanchez.com
104 Jewelry



Erica Rosenfeld

Brooklyn, NY
(718) 930-2065
www.ericarosenfeld.com
305 Jewelry



Paz Sandoval-Fernandez

Philadelphia, PA
(215) 870-7142
www.pazsandoval.com
714 Wood



Directory of Exhibitors

Kim Schalk

Alexandria, VA
(703) 622-8176
www.kimschalk.com
202 Fiber Wearable



Christine Schukow

Ellenville, NY
(845) 647-8575
www.christineoriginals.com
503 Mixed Media



Schiffer Publishing

Atglen, PA
(610) 593-1777
www.schifferbooks.com
228 Book Booth



Biba Schutz

New York, NY
(212) 947-3903
www.bibaschutz.com
317 Jewelry



Melissa Schmidt

St. Louis, MO
314-616-2092
www.melissaschmidtstudio.com
313 Jewelry



Keith Scriven

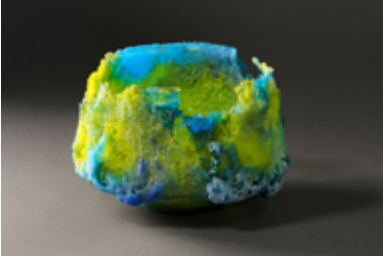
Merion Station, PA
(215) 479-2569
www.builtbyscriven.com
129 Leather



Directory of Exhibitors

Eric Serritella

Chapel Hill, NC
(919) 590-5708
www.ericsserritella.com
511 Glass



Rachel Sherman

Huntingdon Valley, PA
(215) 200-2092
www.malaguetahandmade.com
304 Fiber Wearable



Emily Shaffer

Lincolnton, ME
(717) 712-4499
www.emilyshafferstudio.com
512 Jewelry



Eric Silva

Whittier, CA
(562) 441-3788
www.ericssilva.com
223 Jewelry



Paula Shalan

West Stockbridge, MA
(413) 358-1843
www.paulashalan.com
513 Ceramics



Julie C. Simpson

Olympia, WA
(360) 393-0303
www.juliesimpsonart.com
618 Fiber Wearable



Directory of Exhibitors

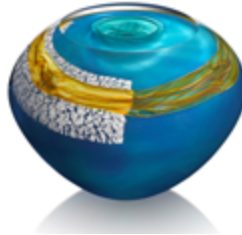
Carson Sio

Philadelphia, PA
(315) 406-5552
www.siometalworks.com
524 Metal



Randi Solin

Brattleboro, VT
(802) 251-0989
www.Randisolinglass.com
623 Glass



Bradford Smith

Lansdale, PA
(267) 664-2220
www.bradfordwoodworking.com
708 Furniture



Thomas Spake

Jasper, TN
(423) 596-8696
www.thomasspakestudios.com
124 Glass



Scott Sober

Scottsville, NY
(585) 538-9621
www.cymafurnituredesign.com
414 Furniture



John Spivey

Santa Barbara, CA
(805) 975 7616
www.johnspiveyfurniture.com
113 Furniture



Directory of Exhibitors

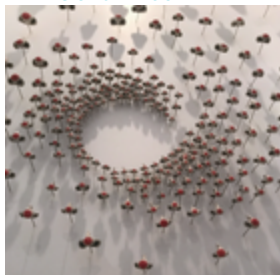
Wendy Stevens

Boyertown, PA
(610) 369-9265
www.wendystevens.com
204 Metal



Jenifer Thoem

Rome, GA
(678) 772-0090
www.jeniferthoem.com
217 Ceramics



Eve Streicker

Norfolk, VA
(401) 258-4892
www.originaleve.com
727 Emerging Artist - Jewelry



Sara Thompson

Vancouver, WA
(508) 431-4972
www.sara-thompson-metalsmith.com
725 Metal



Sharon Tesser

Cape Coral, FL
(812) 537-4924
www.sharontesser.com
600 Fiber Decorative



Toshiki & Maryszka

Lake Grove, NY
212-475-8324
www.toshikiandmaryszka.com
702 Leather



Directory of Exhibitors

Gary Traczyk

Palmetto Bay, FL
(305) 510-2319
www.kineticsteel.com
402 Metal



Shirley Weffer

Fort Lauderdale, FL
(954) 638-9836
www.simplymila.com
135 Fiber Wearable



Steve Uren

Grand Rapids, MI
(906) 458-8035
www.steveuren.com
400 Furniture



Mick Whitcomb

Springfield, MO
(603) 530-2586
www.artifactsbynomad.com
602 Furniture



Stacey Lee Webber

Philadelphia, PA
(317) 363-7808
www.staceyleewebber.com
700 Fiber Decorative, Jewelry, and Metal



Jonathan White

Cape Elizabeth, ME
(207) 767-3835
www.odding.com
103 Ceramics



Directory of Exhibitors

Pamela Whitlock & Richard Davidson

Freedom, WY
(307) 883-6274
www.sosumiweaving.com
624 Fiber Wearable



Yuliya Wolf

Hartford, WI
(262) 397-7258
www.wolfleathers.com
500 Leather



Genevieve Williamson

New Freedom, PA
(717) 793-0193
www.genevievewilliamson.com
712 Jewelry



Genevieve Yang

Corte Madera, CA
(650) 387-3491
www.genevieveyang.com
506 Jewelry



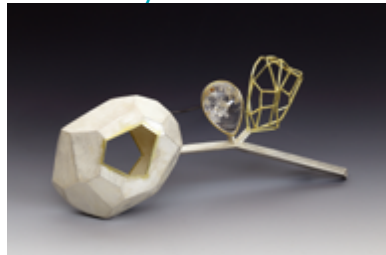
David Winograd

Penn Valley, PA
(215) 990-6848
www.whirligigcraft.com
703 Mixed Media



Liaung Chung Yen

Henrietta, NY
(585) 334-4513
www.liaungchungyen.com
611 Jewelry



Yoshiko (Komatsu)

Chicago, IL
(847) 702-6555
www.yoshikoatelier.com
418 Fiber Wearable



Stephen & Tamberlaine Zeh

Temple, ME
(207) 778-2351
www.tamberlaine.com, www.stephenzeh.com
226 Basketry and Jewelry



Lisa Zolandz

Manassas, VA
(571) 435-0641
www.lisazolandzpottery.com
419 Ceramics



EXHIBITORS BY MEDIUM

BASKETRY

- 420 Laura Baring-Gould
- 622 Jill Heir
- 303 Susan Lenz
- 213 Kari Lonning
- 226 Stephen & Tamberlaine Zeh

CERAMICS

- 711 Sandra Byers
- 704 Winthrop Byers
- 609 Kimmy Cantrell
- 413 Teresa Chang
- 321 Dwo Wen Chen
- 615 Lisa Evans
- 200 Nicholas Everett
- 616 Alexandra Geller
- 115 Ryan Greenheck
- 619 Deneece Harrell
- 224 Lauren Herzak-Bauman
- 211 Angela Humes
- 206 Ani Kasten
- 710 Lori Katz
- 412 Ahrong Kim
- 405 Nancy Kubale
- 728 Cliff Lee
- 707 Mimi Logothetis
- 517 Kreg McCune
- 408 Jennifer McCurdy
- 722 Irina Okula & Dennis Okula
- 221 Mea Rhee
- 513 Paula Shalan
- 217 Jenifer Thoem
- 103 Jonathan White
- 419 Lisa Zolandz

EMERGING ARTIST

- 127 Leda Almar - Ceramics
- 730 Laura Bertapelle - Furniture
- 724 Suyu Chen - Jewelry
- 705 Margo Csipo - Jewelry
- 705 Stephanie Dubskey - Jewelry
- 606 Isys Hennigar - Ceramics
- 215 Karin Luvaas - Jewelry
- 727 Eve Streicker - Jewelry

FIBER DECORATIVE

- 505 Constance Collins
- 403 Deborah Falls
- 118 Joel Fremion
- 726 Amy Gillespie
- 105 Chie Hitchner
- 409 Kate Leibrand
- 303 Susan Lenz
- 417 Beth Levine
- 718 Meg Little
- 205 Claudia Mills

- 107 Julie Powell
- 600 Sharon Tesser
- 700 Stacey Lee Webber

FIBER WEARABLE

- 208 Elyse Allen
- 515 Jennifer Armstrong & Tanya Alsberg
- 106 Annie Bisone
- 706 Deborah Cross & Gordon Heinel
- 131 Marla Duran
- 125 Kristin Gereau
- 621 Isabelle Gougenheim
- 122 Nicole Haddad & Jordan Haddad
- 603 Andrea Geer Handy
- 508 Charlotte Hess
- 105 Chie Hitchner
- 516 Elizabeth Holliday
- 318 Mary Jaeger
- 216 Catherine Joseph
- 302 Audrey Jung
- 418 Yoshiko Komatsu
- 715 Megan Lagueruela
- 502 Valerie Mayen
- 510 Karen Morris
- 109 Nanako (Miller)
- 404 Amy Nguyen
- 729 Susan Otterson
- 410 Gina Pannorfi
- 202 Kim Schalk
- 304 Rachel Sherman
- 618 Julie Simpson
- 135 Shirley Weffer
- 624 Pamela Whitlock & Richard Davidson

FURNITURE

- 607 Christina Boy
- 120 John Cameron
- 128 Evan Chambers
- 613 Rachel David
- 507 Victor Di Novi
- 709 Greg Fuguet & Kristen Snow
- 207 Jorgelina Lopez & Marco Duenas
- 218 Scott Oxenhandler
- 229 Keunho Peter Park
- 101 James Pearce
- 126 Luke Proctor
- 708 Bradford Smith
- 414 Scott Sober
- 113 John Spivey
- 400 Steve Uren
- 602 Mick Whitcomb

GLASS

- 325 Anna Boothe
- 220 Karen & Geoffrey Caldwell
- 415 Kate Gakenheimer
- 723 Patti & Dave Hegland

EXHIBITORS BY MEDIUM

315 Scott Hronich
614 Nicholas Kekic
121 Ann Klem
219 Aron Leaman
222 Michael Mikula
720 J. David Norton
407 Pavel Novak
511 Eric Serritella
623 Randi Solin
124 Thomas Spake

JEWELRY

133 Nicolette Absil
519 Debra Adelson
713 Ashley Buchanan
625 Theresa Carson
203 Jennifer Chin
732 Namu Cho
520 Ann Marie Cianciolo
312 Petra Class & Lucas Class-Knorr
721 Lisa and Scott Cylinder
522 Kate Dannenberg
509 Maria Eife
416 Beth Farber
123 Amy Faust
209 Pat Flynn
300 Steven Ford & David Forlano
314 Geoffrey Giles
111 Danielle Gori-Montanelli
112 Rob Greene
717 Xinia Guan
117 Rebecca Haas
327 Barbara Heinrich
421 Thomas Herman
116 Hughes Bosca
612 Reiko Ishiyama
310 Wiwat Kamolpornwijit
514 Judith Kaufman
225 Christy Klug
605 Jeong Ju Lee
626 Lauren Markley
406 Ayesha Mayadas
617 Holly Anne Mitchell
518 Brenda Morrison
608 Rocky Pardo
308 Jinbi Park
107 Julie Powell
411 Baiyang Qiu
110 Meghan Patrice Riley
604 Melinda Risk
305 Erica Rosenfeld
214 Jonathan Rutledge
104 JacQueline Sanchez
313 Melissa Schmidt
317 Biba Schutz
210 Emily Shaffer
223 Eric Silva

700 Stacey Lee Webber
712 Genevieve Williamson
506 Genevieve Yang
611 Liaung Chung Yen
226 Stephen & Tamberlaine Zeh

LEATHER

504 Laura Burkett
719 Pong Gaddi
417 Beth Levine
129 Keith Scriven
702 Toshiki & Maryszka
500 Yuliya Wolf

METAL

420 Laura Baring-Gould
627 Benjamin Caldwell
522 Kate Dannenberg
119 Darlys Ewoldt
316 Robert Farrell
108 Matthew Naftzger
524 Carson Sio
204 Wendy Stevens
725 Sara Thompson
402 Gary Traczyk
700 Stacey Lee Webber

MIXED MEDIA

716 Lawrence Agnello
309 Bonnie Bishoff & J.M. Syron
610 Katia Bulbenko
227 Adam Crowell
721 Lisa and Scott Cylinder
323 Ryan Jones
102 Harold Kalmus
503 Christine Schukow
703 David Winigrad

PAPER

100 Galen Gibson-Cornell
307 Flavia Lovatelli

WOOD

311 Mark & Sharon Diebolt
620 Diana Friend
512 Phil Gautreau
526 Ray Jones
319 John Mascoll
212 Steve Miller
306 S. Ashley Murphy
114 Robert Patterson
714 Paz Sandoval-Fernandez

GUEST BOOTHS

628 Freeman's
228 Schiffer Publishing

EXHIBITORS BY BOOTH NUMBER

100	Galen Gibson-Cornell	222	Michael Mikula
101	James Pearce	223	Eric Silva
102	Harold Kalmus	224	Lauren Herzak-Bauman
103	Jonathan White	225	Christy Klug
104	JacQueline Sanchez	226	Stephen & Tamberlaine Zeh
105	Chie Hitchner	227	Adam Crowell
106	Annie Bisone	228	Schiffer Publishing
107	Julie Powell	229	Keunho Peter Park
108	Matthew Nafzger		
109	Nanako (Miller)		
110	Meghan Patrice Riley	300	Steven Ford & David Forlano
111	Danielle Gori-Montanelli	302	Audrey Jung
112	Rob Greene	303	Susan Lenz
113	John Spivey	304	Rachel Sherman
114	Robert Patterson	305	Erica Rosenfeld
115	Ryan Greenheck	306	S. Ashley Murphy
116	Hughes Bosca	307	Flavia Lovatelli
117	Rebecca Haas	308	Jinbi Park
118	Joel Fremion	309	Bonnie Bishoff & J.M. Syron
119	Darlys Ewoldt	310	Wiwat Kamolpornwijit
120	John Cameron	311	Mark & Sharon Diebolt
121	Ann Klem	312	Petra Class & Lucas Class-Knorr
122	Nicole Haddad & Jordan Haddad	313	Melissa Schmidt
123	Amy Faust	314	Geoffrey Giles
124	Thomas Spake	315	Scott Hronich
125	Kristin Gereau	316	Robert Farrell
126	Luke Proctor	317	Biba Schutz
127	Leda Almar	318	Mary Jaeger
128	Evan Chambers	319	John Mascoll
129	Keith Scriven	321	Dwo Wen Chen
131	Marla Duran	323	Ryan Jones
133	Nicolette Absil	325	Anna Boothe
135	Shirley Weffer	327	Barbara Heinrich
200	Nicholas Everett	400	Steve Uren
202	Kim Schalk	402	Gary Traczyk
203	Jennifer Chin	403	Deborah Falls
204	Wendy Stevens	404	Amy Nguyen
205	Claudia Mills	405	Nancy Kubale
206	Ani Kasten	406	Ayesha Mayadas
207	Jorgelina Lopez & Marco Duenas	407	Pavel Novak
208	Elyse Allen	408	Jennifer McCurdy
209	Pat Flynn	409	Kate Leibrand
210	Emily Shaffer	410	Gina Pannorfi
211	Angela Humes	411	Baiyang Qiu
212	Steve Miller	412	Ahrong Kim
213	Kari Lonning	413	Teresa Chang
214	Jonathan Rutledge	414	Scott Sober
215	Karin Luvaas	415	Kate Gakenheimer
216	Catherine Joseph	416	Beth Farber
217	Jenifer Thoen	417	Beth Levine
218	Scott Oxenhandler	418	Yoshiko Komatsu
219	Aron Leaman	419	Lisa Zolandz
220	Karen & Geoffrey Caldwell	420	Laura Baring-Gould
221	Mea Rhee	421	Thomas Herman

EXHIBITORS BY BOOTH NUMBER

500	Yuliya Wolf	700	Stacey Lee Webber
502	Valerie Mayen	702	Toshiki & Maryszka
503	Christine Schukow	703	David Winograd
504	Laura Burkett	704	Winthrop Byers
505	Constance Collins	705	Stephanie Dubsy
506	Genevieve Yang	705	Margo Csipo
507	Victor Di Novi	706	Deborah Cross & Gordon Heinel
508	Charlotte Hess	707	Mimi Logothetis
509	Maria Eife	708	Bradford Smith
510	Karen Morris	709	Greg Fuguet & Kristen Snow
511	Eric Serritella	710	Lori Katz
512	Phil Gautreau	711	Sandra Byers
513	Paula Shalan	712	Genevieve Williamson
514	Judith Kaufman	713	Ashley Buchanan
515	Jennifer Armstrong & Tanya Alsberg	714	Paz Sandoval-Fernandez
516	Elizabeth Holliday	715	Megan Lagueruela
517	Kreg McCune	716	Lawrence Agnello
518	Brenda Morrison	717	Xinia Guan
519	Debra Adelson	718	Meg Little
520	Ann Marie Cianciolo	719	Pong Gaddi
522	Kate Dannenberg	720	J. David Norton
524	Carson Sio	721	Lisa and Scott Cylinder
526	Ray Jones	722	Irina Okula & Dennis Okula
600	Sharon Tesser	723	Patti & Dave Hegland
602	Mick Whitcomb	724	Suyu Chen
603	Andrea Geer Handy	725	Sara Thompson
604	Melinda Risk	726	Amy Gillespie
605	Jeong Ju Lee	727	Eve Streicker
606	Isys Hennigar	728	Cliff Lee
607	Christina Boy	729	Susan Otterson
608	Rocky Pardo	730	Laura Bertapelle
609	Kimmy Cantrell	732	Namu Cho
610	Katia Bulbenko		
611	Liaung Chung Yen		
612	Reiko Ishiyama		
613	Rachel David		
614	Nicholas Kekic		
615	Lisa Evans		
616	Alexandra Geller		
617	Holly Anne Mitchell		
618	Julie Simpson		
619	Deneece Harrell		
620	Diana Friend		
621	Isabelle Gougenheim		
622	Jill Heir		
623	Randi Solin		
624	Pamela Whitlock & Richard Davidson		
625	Theresa Carson		
626	Lauren Markley		
627	Benjamin Caldwell		
628	Freeman's		

THE PHILADELPHIA SHOW

ANTIQUES • ART • DESIGN

SAVE THE DATE

April 28–30, 2023

Preview Party April 27

East Terrace of the Philadelphia Museum of Art

thephiladelphiashow.com



In memory of our mother
Nancy McKinney McNeil

— MARCH 21, 1926 - JANUARY 18, 2022 —

Our mother was an early member of the Women's Committee and impactful in the conception and founding of the Philadelphia Craft Show. She was a passionate and dedicated volunteer in the early years of the show. As such, she became a friend, advocate, mentor, and patron to emerging craft artists. To further inspire development, she underwrote prizes annually to reward excellence. Earnest about educating herself in the realm of crafts, she travelled to many shows and museums and served on the Board of the American Craft Museum. She thus became a collector and contributor to the nascent department and collection of American Craft at the Philadelphia Museum of Art. Her legacy will live on through the recently established Nancy McKinney McNeil Acquisition Fund.

With love,

Robert L. McNeil III, Joanna McNeil Lewis,
Victoria McNeil Le Vine & Collin F. McNeil

In Memory of Eric Berg

1945-2020



Philadelphia Museum of Art Craft Show Judge
Eric Berg Prize for Excellence in Metal
2011-2019

Select works available
for collection

www.bergbronze.com
215-694-6667



THE FABRIC OF THE MUSEUM



Join the Associates and Chairman's Council

Inspire. Impact. Access.

Become a part of a community of philanthropic leaders dedicated to supporting the cultural heart of Philadelphia. Make a difference and enjoy a customized experience full of sneak peeks, one-of-a-kind events, travel with curators, and more.

Now is the time to double your impact: while funds last, all new memberships, beginning at \$2,500 annually, will be matched dollar-for-dollar through the Leadership Giving Challenge.

To learn more or join, contact us at **215-684-7766**, associates@philamuseum.org, or philamuseum.org/associates.

Thinking about including the museum in your estate plans? If so, please contact Tara Prakash at 215-684-7351 or tara.prakash@philamuseum.org.

Photo by Elizabeth Leitzell

Philadelphia
Museum of
Art



**Great job
Melissa (Mom)**
as Show Chair
this year!

THE
46TH
ANNUAL
PHILADELPHIA
MUSEUM
OF ART

CONTEMPORARY
CRAFT
SHOW

Love from:

Katherine, Jamie, Marnie, Jerry & Maura

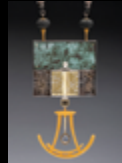
CRAFTFORMS 2022

27th International Juried Exhibition of Contemporary Fine Craft

December 3, 2022-January 21, 2023

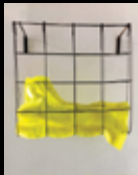
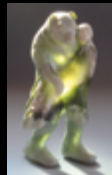


CraftForms Preview Party
Friday, December 2 | 7-10pm



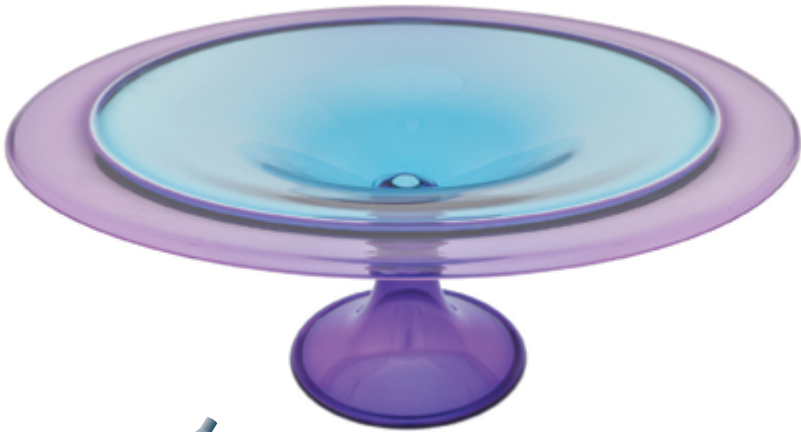
Also on view

BEYOND GLASS



 wayne art center
craftforms.org

PRESENTING INCALMO WORKS BY MINH MARTIN ~ ROMEO GLASS



4312 Main Street · Manayunk · 215.508.6728
orbitart@aol.com
Follow us on Facebook

Digital Jurying & Application System for the Arts



www.JuriedArtServices.com
info@jurying.net

CRAFT YOUR MUSEUM EXPERIENCE



Join Techné: Ambassadors for International Craft

The world of craft awaits

As a member of Techné, you connect with other craft enthusiasts to enjoy access to curators, artists and their studios, and private collections. Your annual membership gift supports the museum's growing collection of international craft.

If you like the Craft Show, then you'll love Techné. Join today.

Membership in Techné is available to museum members. Learn more or join by contacting us at giving@philamuseum.org, 215-684-7750, or philamuseum.org/techné.

River of Love... or Tears, 2003, by Jack Larimore (Gift of Charles and Margo Todd, 2019-99-1)

Philadelphia
Museum of
Art



**ART
BY
HAND**

See you here
next year!

THE
47TH
ANNUAL
PHILADELPHIA
MUSEUM
OF ART

CONTEMPORARY
CRAFT
SHOW

2023 APPLICATION PERIOD: DECEMBER 15, 2022 - APRIL 1, 2023

November 3-5, 2023
Preview Party November 2

Pennsylvania
Convention
Center

pmacraftshow.org

A Tribute

The Women's Committee of the Philadelphia Museum of Art expresses its profound sadness on the death of two committee members who made significant contributions to the Museum and to the Philadelphia Museum of Art Craft Show.

☀️ | ANNETTE YUSEM FRIEDLAND | ☀️

Annette's style and creativity were renowned. At the first Philadelphia Craft Show in 1977, she co-chaired the Wearables sub-committee with Julie Schafler, then owner of Julie Artisan's Gallery in New York. Few could match Annette's fashion sense. Her many donations to the Costume and Textiles Department have enhanced the collection and illustrate her unique style.

Annette enriched the Committee with her dedication and all who knew her with her vibrant spirit and unparalleled generosity.

☀️ | NANCY MCKINNEY MCNEIL | ☀️

Nancy's greatest gift to the Committee was her interest in the developing field of American Craft and her willingness to create and co-chair the first Philadelphia Craft Show in 1977. Nancy championed and supported future chairs and developed the Craft Show into the powerhouse it has become. She not only collected American crafts when few were doing so, she advocated and encouraged others to do so.

We are especially grateful for her devotion to the Committee and will cherish her memory.



The 46th Annual Philadelphia Museum of Art Craft Show is produced by The Women's Committee and the Craft Show Committee of the Philadelphia Museum of Art

Past Chairs of the Philadelphia Craft Show

1977	Mrs. Thomas T. Fleming Mrs. William C. Lowry III	2001	Elissa G. Topol
1978	Mrs. Thomas T. Fleming Mrs. William C. Lowry III	2002	Katharine A.S. Padulo
1979	Mrs. Robert L. McNeil, Jr. Mrs. William C. Lowry III Mrs. William C. Lowry IV	2003	Linda G. Fuller
1980	Mrs. Robert L. McNeil, Jr.	2004	Joan R. Momjian
1981	Mrs. Robert L. McNeil, Jr.	2005	Sally G. Sharkey
1982	Mrs. C. Marshall Lamason Mrs. William C. Lowry IV Mrs. Collin F. McNeil	2006	Cathy Altman
1983	Mrs. I. Wistar Morris III	2007	Susan M. Zelouf
1984	Mrs. I. Wistar Morris III	2008	Eve Walker
1985	Mrs. Donelson R. Manley	2009	Amy A. Fox
1986	Mrs. Donelson R. Manley	2010	Marta Adelson
1987	Mrs. John J. F. Sherrerd	2011	Reid N. Bodek
1988	Mrs. Leonard Klorfine	2012	Lisa Woolbert
1989	Mrs. Stephen R. Jacobs	2013	Laura Rothrock
1990	Mrs. Edward S. Madara, Jr.	2014	Carol Blank Barsh
1991	Mrs. Christopher H. Gadsden	2015	Ellen Caplan
1992	Mrs. Alfred W. Putnam, Jr.	2016	Gwen Goodwill Bianchi
1993	Mrs. Harold W. Pote	2017	Pam Yih
1994	Mrs. John A. Affleck	2018	Michele V. Brotman
1995	Beverly M. Wilde	2019	Anja Levitties
1996	Mrs. Morgan R. Jones	2020	Robin Blumenfeld Switzenbaum
1997	Mrs. Robert W. Connor	2021	Sally G. Sharkey
1998	Ellen Simon		
1999	Mrs. Richard Rothman		
2000	Mrs. Robert A. Fox		

Directors

Susan Zelouf, *Chair*

Marta Adelson*

Cathy Altman*

Carol Blank Barsh*

Gwen Goodwill Bianchi

Michele Brotman

Melissa Clark*

Anja Levitties

Ami Lonner*

Laura Rothrock

Sally Sharkey*

Ellen Simon

*ex-officio

Craft Show Committee Members

Melissa Clark, *Show Chair*

Ami Lonner, *Show Vice-Chair*

Susan Charleston, *Show Treasurer*

Susan Zelouf, *Chair, Craft Show Directors*

Cathy Altman, *Women's Committee President*

Nancy O'Meara, *Craft Show Manager*

Marta Adelson

Jill Aschkenasy

Carol Blank Barsh

Brucie Baumstein

Gwen Goodwill Bianchi

Ilene Blain

Charlotte Blankfield

Janice Block

Robin Blumenfeld

Reid N. Bodek

Lisette Bralow

Kay Braun

Michele Brotman

Gigi Bruce

Ellen Caplan

Florence Caplan

Juliet Childs

Mary Ann Chou

Kris Christensen

Candace Coleman

Veronica M. Connor

Mary Copeland

Bonnie Derr

Linda Dooney

Kim Emmons-Benjet

Kirstin Engelman

Margo Eremus

Amy A. Fox

Penny Fox

Linda G. Fuller

Clare Fullerton

Eleanore H. Gadsden

Angela Gatto-Rekant

Frances Gerson

Jaynie Grant

Sis Kapnek Grenald

Barbara L. Gross

Barbara S. Gross

Janet Holloway

Suzanne C. Jacobs

Carol W. Jones

Mary Kahn

Debbie Kelly

Kris Kent

Norma E. Klorfine

Julie Kronfeld

Emilie Lapham

Myrna Levin

Anja Levitties

Anita Lockhart

Linda Matrunich

Paige McAfee

Joan R. Momjian

Katharine A.S. Padulo

Zoe Pappas

Jeffrey Petty

Amanda Phillips

Barbara Podell

Judy C. Pote

Olivia Rabe

Venetta R. Robinson

Eve Prensky Roe

Ann Dee Rome

Marsha W. Rothman

Laura Rothrock

Francyn Elion Sacks

Mary Ellen Schneider

Randy Schwartz

Sally Sharkey

Genvieve Shields

Ellen B. Simon

Lenee Stein

Keith Straw

Elissa G. Topol

Nancy Uffner

Susan Vitale

Eve Walker

Julie West

Beverly M. Wilde

Lisa Williamson

Pam Yih

SPECIAL THANKS TO OUR 2022 JURORS

Allison Barnett, Santa Fe, NM, Co-Founder and Director of Sales, Patina Gallery.

Allison co-owns Patina Gallery with her husband, Ivan. She holds a BFA in metalsmithing from Syracuse University. Established in 1999, Patina exhibits soul-stirring clay, wood, sculpture, fiber and other mixed media objects. The gallery holds a unique position in the field because it shows studio jewelry in the same gallery space with larger works. Patina Gallery has always felt that great design should inhabit all the works in the gallery, regardless of scale.

Chad Curtis, Philadelphia, PA, Associate Dean and Associate Professor Ceramics, Temple University, Tyler Art & Architecture.

Chad is an artist and educator who is motivated by politics of the environment, land use, climate change and the evolution of these relationships over time. Visually, Chad's work references traditional notions of the sublime landscape and monumental beauty such as vast open spaces, the horizon, trees and mountains. Chad received his MFA from NYSCC at Alfred University in 2002 and his BFA from Minnesota State University, Mankato in 1997. Chad started teaching at Tyler School of Art in 2007.

Bruce Hoffman, Philadelphia, PA, Director, Gravers Lane Gallery.

Bruce is Director of Gravers Lane Gallery, founded in 2010, in Philadelphia. Having worked in the field of studio crafts for more than three decades, Bruce has a historical understanding of studio crafts as well as an appreciation of artists' work and process. He has taught at Moore College of Art and Design, lectured and been a guest speaker for many colleges, and has had the honor to jury shows for many fine museums, guilds, and art centers across the country.

Andrew Page, Brooklyn, NY, Editor, Glass Quarterly.

Andrew is the editor of UrbanGlass, a quarterly journal. A writer and book editor, Andrew has co-curated exhibitions on glass; frequently serves as a panelist and lecturer; and has written for a wide range of publications. He is the founder of the Robert M. Minkoff Foundation Academic Symposium at UrbanGlass, a biennial event that has brought together the international community of glass art educators four times since 2013. From 2011 to 2019, Andrew was Director of the Robert M. Minkoff Foundation, a nonprofit organization that works to advance glass art.

2022 Craft Show

Best of Show

\$1,500

Sponsored by the Fleming Family in honor of Fifi Fleming and Mary Lee Lowry.

National Awards

The Philadelphia Museum of Art Craft Show gratefully acknowledges the generosity of the following organizations in awarding prizes in the amount of \$1,000 to individual craft artists:

- The Eric Berg Prize for Excellence in Metal
- The Louise K. Binswanger Prize for Best Artist New to the Show
- The Cohn Family Trust Prize for Excellence in Glass
- The Prize for Excellence in Fiber Art
- The Jane and Leonard Korman Family Prize for Excellence in Clay
- The Levitts Family Prize for Excellence in Design
- The Ornament Magazine Prize for Excellence in art to Wear
- The Prize for Excellence in Jewelry
- The Wharton Esherick Museum Prize for Excellence in Wood

Thank you to our PREVIEW PARTY PATRONS for their generous support, 2022.

VISIONARY

Marta and Robert Adelson Family Foundation
Catherine Altman
Edith R. Dixon
Amy Fox and Daniel Wheeler

Penny Fox
Michael Goldberg
Leonard Korman
Sally G. Sharkey

ANGEL

Janice and Arthur Block
Marcy Gringlas and Joel Greenberg
Victoria McNeil Le Vine
Miriam Mandell
Martha Hamilton and Wistar Morris
Zoë S. Pappas
Barbara Podell and Mark Singer

Marsha W. Rothman
Laura and Kirk Rothrock
Robin and Mark Rubenstein
Shreiber Foundation
Elissa G. Topol and A. Lee Osterman
Harriet and Larry Weiss

BENEFACTOR

Abacus Planning Group
Katie Adams
Dr. and Mrs. Todd Albert
Dennis Alter
Sally and Devin Aronstam
Jill and Paul Aschkenasy
Pat and David Atkinson
Stephanie and Matthew Austin
Andrea M. Baldeck, M.D.
Carol and Horace Barsh
CFG
Connie Berg, Berkshire Hathaway
Julie C. and Lawrence H. Berger
Gwen Goodwill Bianchi
Robin Blumenfeld
Lois G. Brodsky
Michele and Jeff Brotman
Ellen and Ron Caplan
Mary Ann and George C. Chou
Kris Christensen
Melissa and David Clark
Jayme Colket
Mrs. Tristram C. Colket Jr.
Carole and Doug Cook
Shirley and Gene Cordes
Carolyn and Mitchell Davis
Michelle and Eugene Dubay
Kim Emmons-Benjet and Brian Benjet
Kirstin and Jeffrey Engelman
James G. Fulton, Jr. and Eric Rymshaw
Shanta Ghosh
Frances R. and William A. Graham, IV
Anne and Matthew Hamilton
Hannah L. Henderson
Margie and Jeffrey Honickman
Ruth and Richard Horowitz

JDK Foundation
Sharon and Joseph Kestenbaum
Nancy and Dick Klavans
Judy and Peter Leone
Anja and Matthew Levitties
Dana and John Levitties
Maxine deS. Lewis
Ami and Jess Lonner
Ann S. McIlvain
The Honorable John J. Medveckis
Leslie A. Miller and Richard B. Worley
Linda and Laddie Montague
Catherine and Steven Nierenberg
Donna and Bill Oliver
Katharine and Louis Padulo
Linda and David Paskin
Darin Pfeifer
The Quaker City Foundation
Drs. Angela and Mark Rekant
Jennifer Rice and Michael Forman
Gilroy and Lillian P. Roberts Foundation
Ann Dee and Joel Rome
Lyn M. Ross
Michele and David Rubenstein
Rebecca and Greg Segall
Lisa Roberts and David Seltzer
Susan Sherman
Ellen and Mickey Simon
The Specter Family Foundation
Mrs. Judith Taylor and Mr. Eli Engel
Sonia C. Triester
Barbara Tober
Judith and David Wachs Family Foundation
Constance H. Williams
Lisa and Lars Williamson
Pam and Don Yih
Susan and David Zelouf

COLLECTOR

Charna Axelrod
Regina Voit Baime MD and Peter Liguori
Elyse and Max Berger
Ilene Blain
Charlotte Blankfield
Reid Bodek
Lisette Bralow
Kay Braun
Ira Brind and Stacey Spector
Lloyd Brown
Gigi and Scott Bruce
Julie Jensen Bryan
Pam and Bob Byers
Florence Caplan
Elise W. Carr
Ellen Carver
Sara A. Cerato
Susan Charleston and Kenneth Davis
Juliet F. Childs
Karen and Stewart Cohen
Ivy Cohn
Candace H. Coleman
Dr. and Mrs. Robert W. Connor
Mary and Bill Copeland
Maude de Schauensee
Anne Walsh Daddario
Eleanor L. Davis
Bonnie C. Derr
Barbara Eberlein and Jerry Wind
Peter C. Egan
Margo Perry Eremus
Henry C. Fader
Mary and Joe Fenkel
Jaimie and David Field
Nancy Fine
Amy Finkel and Richard Braemer
Linda G. Fuller
Clare Fullerton
Elizabeth H. Gemmill
Frances and Elliot Gerson
Linda Golden
Barbara L. and Lawrence Gross
Barbara S. and Steve Gross
Arlene and Jack Grossman
Pamela M. Hamilton
Dr. and Mrs. Judd Hollander

Janet Holloway
Cynthia Holstad
Sue and Steve Jacobs
Cynthia Lee Johnson
Joan M. Johnson
Carol W. Jones
Margaret E. Jones
Mary Kahn
Arthur M. Kaplan and R. Duane Perry
Linda Ronis Kass
Debbie and Paul Kelly
Connie and Tom Kim
Susan and Leonard Klehr
Nancy Kneeland and Becca Flemer
Karen and Bill Kramer
Ed Kress
Julie Kronfeld
Mr. and Mrs. Stephen L. Kurtz
Myrna S. Levin
Jon Liss
Anita and Pete Lockhart
Mickey and Larry Magid
Fred Manfred
Joseph M. Manko
Linda Matrunich and Patrick Grannan
Paige McAfee
Laura Kind McKenna
Harvey S. Shipley Miller
Maida R. Milone
Joan R. Momjian
Sara Nerken
Danuta Nitecki
Gail and Elliott Norry
Robert Odell
Marie O'Donnell and Bruce Satalof
Aleni Pappas
Maureen Pelta and Alan M. Feldman
Jane G. Pepper
Amanda Phillips
Laurie Phillips and Barry A. Milberg
Marji Rosenbluth Philips
Olivia Rabe
Lizabeth Raynes
Stephanie Resnick
Eve Prensky Roe
Suzanne Root, Esquire

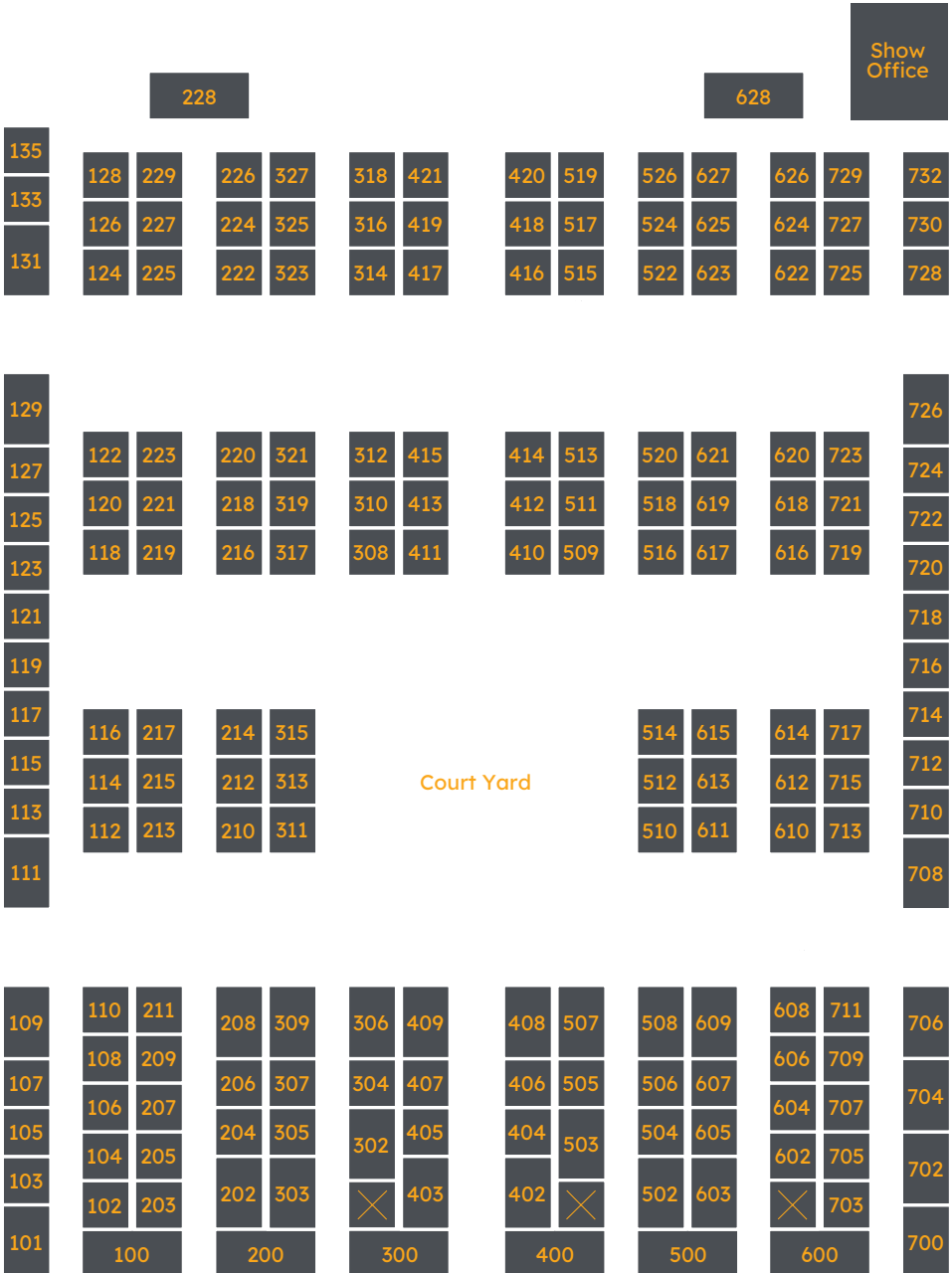
Katherine Sachs
Julie and Jordan Savitch
Gena Scanlan
Douglas Schaller
Karyn L. Scher
Mary Ellen and Carl Schneider
Randy Jill Schwartz
Toni Seidl and Rick Berkman
Irene and Fred Shabel
Carol Nelson Shepherd
Genvieve Shields
Rita Siegle
Donna and Jerald Slipakoff
Janet Wilson Smith
Mrs. John L. Steigerwalt
Lenee Stein
Lisa Stone Design
Keith and Jim* Straw
Joan Thalheimer
Mr. and Mrs. Paul Thompson
Debbie Feith Tye
Nancy W. Uffner
Nathalie Verma
Susan Vitale
Donna Walker
Mr. and Mrs. William D. Walker
Beverly and Norman Wilde
Lisa Woolbert
Eve and Richard Wyckoff

*deceased

Due to printing deadline, list is incomplete.

Floor Plan

Restrooms



Restrooms

Entrance

Restrooms

(Floor Plan NOT to scale)

Thank you to our Show Sponsors for their generous support.

Goldman Sachs

FREEMAN'S

M Maguire Foundation

JANE & LEONARD KORMAN FAMILY FOUNDATION

JONATHAN BASSMAN
INTERIOR DESIGN LLC

EST. 1952
Elwyn

THE MCCAUSLAND FOUNDATION

MILL CREEK
Our values appreciate yours

Morgan Stanley
PRIVATE WEALTH MANAGEMENT

PARKWAY
Corporation

PHILADELPHIA HAND TO SHOULDER CENTER

UBS

J.P. Morgan
The Carroll Group
at J.P. Morgan
Wealth Management

When you purchase a ticket to the Philadelphia Museum of Art Craft Show or become a sponsor of the Show, you are directly supporting the work of the Philadelphia Museum of Art.